



Enviro BRM™ products integrate our patented Extreme-Woodlam™ blast resistant technology to meet safety design requirements from accidental industrial explosions or security Anti-Terrorism design requirements from bomb attacks. Our standard Enviro BRM™ designs range from 2 psi to 10 psi free-field blast overpressures up to 200 msec with ASCE medium response level and compliance with recommended practices listed in API RP 753.

Enviro BRM™ combines steel framing with Extreme-Woodlam™ panels and are far more environmentally amiable to manufacture, cost effective and are considerably ergonomically friendlier than standard steel BRMs.

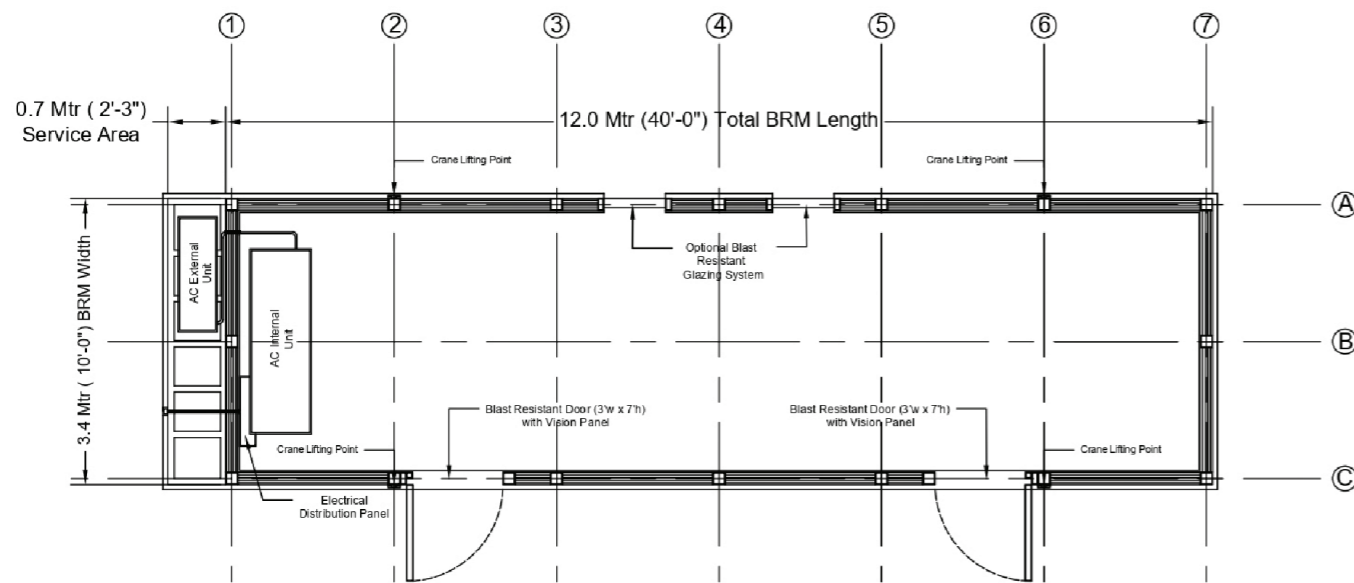


Features & Benefits

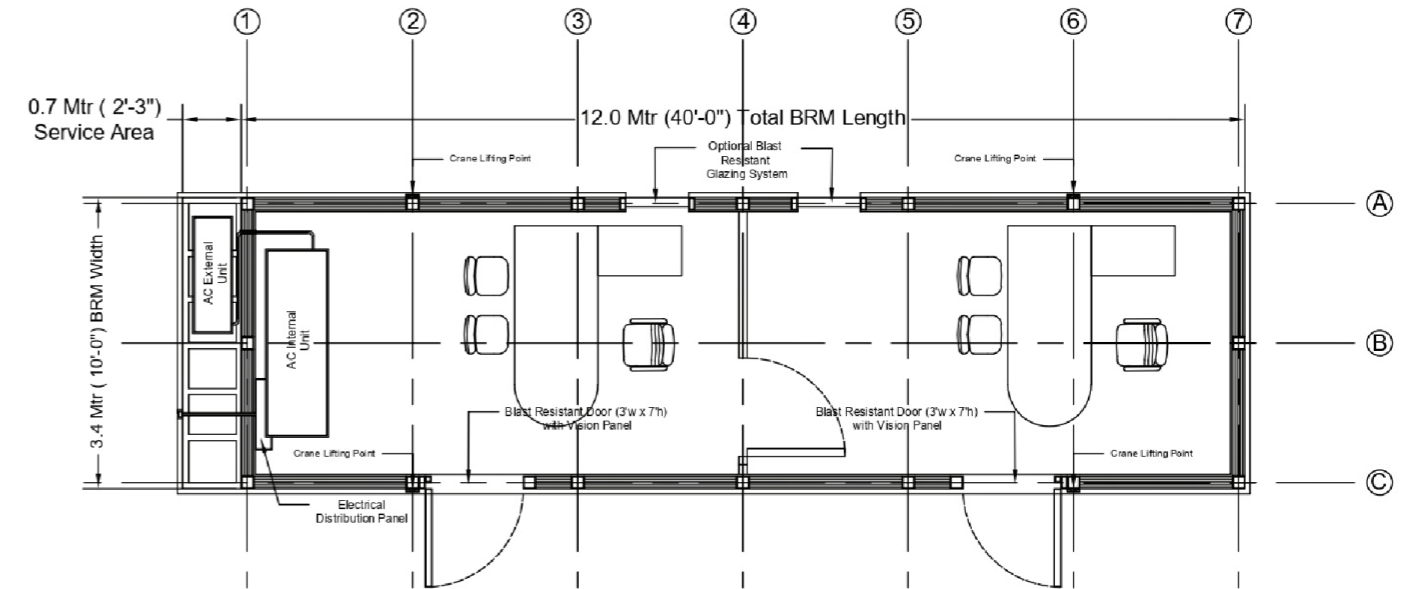
- ▶ Third Party Design and Testing Certification Available Upon Request
- ▶ Interior Finishing and insulation Included
- ▶ Electrical Input and Lighting Incorporated
- ▶ Exterior Blast Resistant Doors Incorporated
- ▶ Exterior Blast Resistant Glazing Incorporated (as requested)
- ▶ Integrated HVAC System
- ▶ Integrated Smoke Detectors
- ▶ ABC Fire Extinguishers Included
- ▶ Emergency Exit Signs with Lighting Included
- ▶ Data / Voice Systems Incorporated

Additional safety, design and external / internal finishing requirements and features can be easily integrated to meet the project requirements

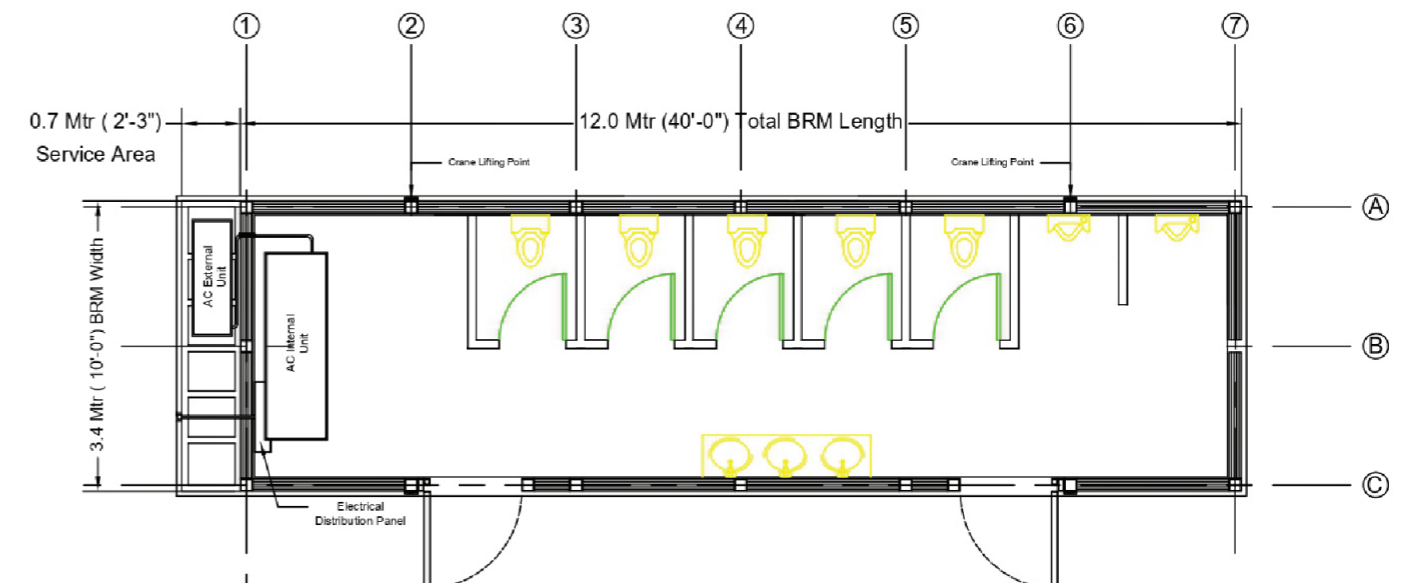
Standard Office Floor Plan



Multi Office Floor Plan



Multi Bathroom Floor Plan



Enviro BRM™ can be built in single or multiple units to accommodate most sizing and needs including floor plans and designs for offices, washrooms, boardrooms, lunchrooms, shelters, guard booths and critical equipment storage. Stone Protective Solutions, LLC has a strong backing in engineering, and can brain storm with you to achieve your ideal layout size and floor plan – reach out to Stone Protective and our licensed fabricators for all your blast needs, reference material and quotation requests.

Plan Ahead. By getting us involved as soon as possible in the design period, we are able to help streamline the engineering, manufacturing and onsite installation, ensuring you receive what you need when you need it.





Contact Us



UNITED STATES OF AMERICA & CANADA

84 Country Road, Callicoon, NY, 12723, USA.



☎ | +1 (845) 439-9010

✉ | info@stoneprotectivesolutions

🌐 | stoneprotective.com



SAUDI ARABIA & UNITED ARAB EMIRATES

Kabbani Construction Group (KCG) P.O. Box 6897 Dammam 31452



☎ | +966 (13) 892 3444

✉ | info@ikkstonesolutions.com

🌐 | kcg-ikk.com