

Welcome to our
Company.

COMPANY PROFILE - VI



KABBANI
CONSTRUCTION
GROUP®



**KABBANI
CONSTRUCTION
GROUP®**

Table of Contents

06	IKK Company
08	KCG Company
10	Global Presence
12	Health, Safety & Environment “HSE”
14	KCG Figures & Revenues
16	KCG Business Divisions
58	KCG Regional Presence
66	Projects Highlights in KSA
110	Projects Highlights outside KSA
124	Contacts





NEOM is a bold and audacious dream of a new future, an accelerator of human progress that will embody the future of innovation in business, livability and sustainability.

Picture: Neom | KSA

About IKK

The IKK Group is a large commercial institution with a physical presence in the MENA area. We have an exporting reach of over 20 countries worldwide. Our operations are divided into four primary divisions: an industry-leading IKK manufacturing division, an IKK trade division, an IKK contracting division, and an IKK services/maintenance division with a strong emphasis on the construction industry. After nearly five decades, the IKK Group has established itself as one of the top family private business enterprises, with a combined turnover in excess of 4 billion SAR. We are proud and confident that our organization has constantly ranked among the top 50 private Saudi groups over the last decade.



IKK Group of Companies



**KABBANI
CONSTRUCTION
GROUP®**

IKK's contracting vehicle is KCG, which consists of 23 specialized construction businesses and divisions.



شركة المؤسسة الوطنية للتسويق المحدودة
NATIONAL MARKETING EST. COMPANY LIMITED

A prominent distributor of high-quality modern plastic piping systems, representing a number of important national and international companies.



Neproplast, a part of NAMAT company, is a manufacturer of PVC, CPVC, HDPE, COD pressure, and non-pressure applications marketed and distributed exclusively through National Marketing Est. Co. Ltd.



UNITECH is a well-known "Solutions Provider" company within the region. It specializes in the design, manufacturing, trading, and specialized procurement of building and construction materials.



IKK Glass is a leading manufacturer of processed architectural glass products in Saudi Arabia, offering a wide range of glass products, including: Annealed Float Glass, Heat-Treated Glass, Curved Tempered Glass, and Insulated Glass Units.



IKK Mateenbar produces high-quality glass-fiber reinforced polymer (GFRP) rebar.

IKK Group Vision & Mission

Our vision is to be one of the leading organizations within the construction industry and beyond.

Our mission is to continue providing innovative solutions in manufacturing, contracting, and trading.

IKK Management



Mr. Isam Kabbani
IKK Group Honorary Chairman



Mr. Hassan AlKabbani
IKK Group Chairman



Mr. Amr AlKabbani
IKK Group CEO

IKK Revenues



IKK Facts & Figures



11 Countries
over the globe



200,000+ Projects
overtaken



12,000+
Employees

Kabbani Construction Group



KCG

IKK's contracting vehicle, consisting of 23 specialized construction companies. Upon targeting excellent standards, our teams of specialists dedicate their exceptional skills and experience to providing impeccable quality and performance that sets an example for others in our industry and marks hammering steps into the future.

1977

Since its inception in the 70s, KCG has evolved and expanded to become one of the largest specialized contractors in the GCC & MENA regions, providing digital construction services, archeological services, construction services for infrastructure & roads' construction, oil & gas, industrial insulation, commercial & residential structure, structure assessment & repairs, strengthening solutions, airfields & rigid Pavement, engineered heavy steel, structure fabrication & construction, Cathodic protection, and solar energy.

Our Vision

Our vision is to maintain and improve our leading position as a contractor whose reputation is built on the ability to completely satisfy customers by providing high-quality services. Our teams of professionals are dedicated to a standard of excellence for quality and performance, through continuous development, which will set standards in our industry. We are simply providing solutions for a future of success.

Our Mission

To provide the Arab World with local & reliable services in a variety of sectors and products. Creating employment for thousands of personnel and in-house training for hundreds of young Arab graduates to the benefit of the IKK Group, the graduates themselves, and their own communities.



5000+

KCG possessed a large inventory of equipment for carrying out mega projects, infrastructure works, innovative construction projects, & Specialized Construction Applications.

Our product range has been carefully selected to meet the growing demand for advanced engineering materials & solutions.



KCG CEO

ENG. HATEM SALAHELDIN

KCG BUSINESS PHILOSOPHY

We are here to support you. Think of us as your neighbor with the fully stocked tool shed who is always willing to lend a helping hand.

We support and guide you, relying on our knowledge and experience to explore and find fully capable solutions.

We give our employees the freedom to determine their own career paths and fulfill their targets.

We empower our clients by customizing our solutions to meet their specific requirements.

We strengthen our community by introducing them to what is possible today and laying a solid foundation for the future.

KCG is committed to meet its fundamental responsibilities to shareholders, employees, customers, and suppliers.

KCG

Global Presence



  Saudi Arabia



  Emirates



  Egypt



  Lebanon



  Oman



  Bahrain



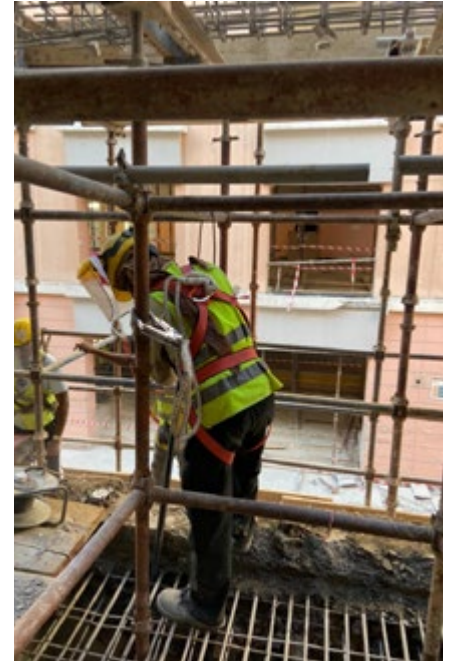
  Kuwait




  Qatar



KCG will conform with local government legislations associated regulations, approved codes of practice, and guidance notes, in giving the aforementioned undertaking. The ultimate responsibility for ensuring compliance with any legal requirements for workplace health and safety rests with the KCG Chief Executive Officer, who is supported by the KCG Safety Department, which is accountable for meeting compliance at all levels and the continued development of the KCG Safety Program. All parties are responsible for ensuring the health, safety, and well-being of all stakeholders. No corporate goal shall take precedence over health and safety, and no activity is so imperative that it cannot be completed safely.





USGBC
MEMBER

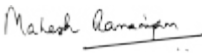
SILVER

KABBANI CONSTRUCTION GROUP

USGBC MEMBER SINCE APR 20, 2021

Is an active member of the U.S. Green Building Council, the foremost coalition of leaders working to transform the way buildings and communities are designed, built and operated. Our vision is that buildings and communities will regenerate and sustain the health and vitality of all life within a generation.

This membership was awarded on Apr 20, 2021.



MAHESH RAMAMUJAM
President & CEO



KCG SAUDI ARABIA

DIVISIONS

Construction Services & Maintenance



Industrial Construction, Repair & Maintenance



Cathodic Protection, & Heat Treatment



Renewable Energy Systems



Steel & Metal Fabrication & Structure



Fitout Contracting & Facade Engineering



Electromechanical Contracting Company



Concrete Precast Fabrication & Erection



Airports, Roads & Infrastructure



Airfield Construction & Maintenance



KCG

FACTS & FIGURES



11,000+ Employees Globally



100,000+ Projects Overtaken



40+ Years of Experience



5000+ Equipment, 1900+ Vehicles.
KCG owns vehicles and equipment worth 630 M SAR.

Kabbani Construction Group (KCG) is the contracting vehicle of the IKK Group, one of the largest and oldest business institutions in Saudi Arabia.



Waterproofing & Thermal Insulation



Protective coating solutions, Insulation & Scaffolding



Concrete Repair & Soil Improvement



Post Tensioning Systems



Waterproofing, Damp proofing & Firestopping



Digital Engineering & Digital Construction Applications



Condition Assessment & Infrastructure Management Solutions



Archaeological Field Management Solutions



Jointless Flooring Contracting



Exterior Insulations & Finishing Systems

KCG REVENUES



An aerial photograph of a coastal development at sunset. The sky is a gradient of orange and yellow, transitioning into a clear blue. The water is a deep blue with gentle ripples. In the foreground, there are several small, artificial islands or structures built in the water, featuring palm trees and modern buildings. Some structures have purple and blue lighting. In the background, a long, narrow landmass or peninsula stretches across the horizon under the warm glow of the setting sun.

KCG

BUSINESS DIVISIONS

As part of its never-ending efforts to provide the finest services possible, KCG has 21 business divisions offering a wide range of general and specialized construction industry activities.

Picture: The Red Sea Development | KSA



COSMA

Construction Services & Maintenance



COSMA (Construction & Maintenance Services) was originally established in 1987 to serve Saudi Aramco's specialized construction services and preventive maintenance needs for community and industrial. COSMA's services have expanded to many major prestigious clients for plant and refineries, including SASREF, SAMREF, LUBEREF, SEC, the Royal Commission of Jubail & Yanbu, and many more. Our Services: General civil work, Housing construction, Building & community maintenance, Infrastructure works, Mechanical construction & maintenance, Industrial tank construction.

OUR SERVICES

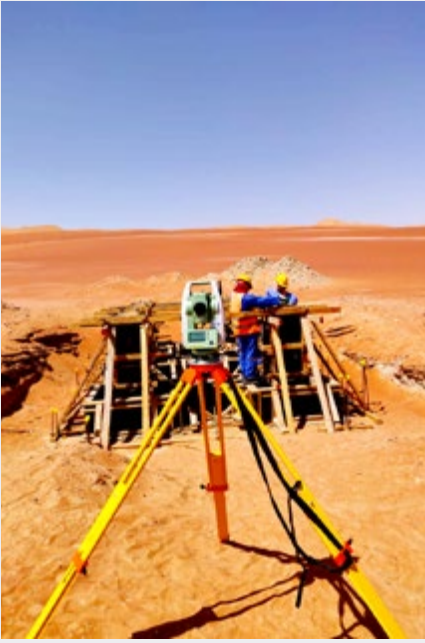
- 1- General Civil Work
- 2- Housing Construction
- 3- Building & Community Maintenance
- 4- Infrastructure Works
- 5- Mechanical Construction & Maintenance
- 6- Industrial Tank Construction



General Construction Work



Steel Works



Survey



Concrete Flooring



Civil Works



Fast track projects

ISD

Industrial Construction, Repair & Maintenance

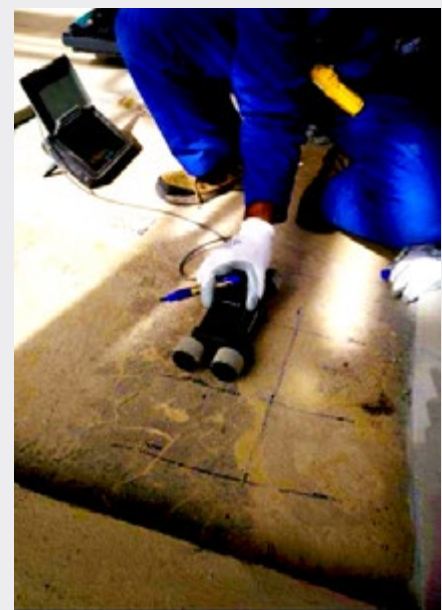


ISD (Industrial Services Division) is a specialized contractor supporting Saudi Arabia's industrial belts. ISD has successfully performed numerous repairs and maintenance projects around the nation, mostly for subsidiaries of Sabic, SWCC, Marafiq, SEC, Sadara, Farabi, Tasnee, and other important industrial clients.

ISD's distinctive approach, led by highly skilled engineers and personnel, entails a thorough understanding of the facilities and the development of a comprehensive remedial plan. This approach extends the service life of the industrial structure and ensures minimal disruption of facility operations with a strong emphasis on safety.

OUR SERVICES

- 1- Conditional & Risk Assessments
- 2- Blast Resistance & Mitigation
- 3- Structural Concrete Repair
- 4- Steel Structure Upgrades
- 5- Composite Strengthening
- 6- Industrial Maintenance
- 7- Linings & Coatings
- 8- Marine & Underwater Repairs
- 9- Waterproofing
- 10- Corrosion & Protection Control
- 11- Mechanical Piping & Fabrication
- 12- Electrical Instrumentation
- 13- Re-Tubing of Heat Exchanger
- 14- Hydro-Jetting / Pressure Cleaning
- 15- Bundle Pulling Services





SOGEC

Cathodic Protection & Heat Treatment



SOGEC (Specialized Oil & Gas Engineering Company) is a 100% Saudi National Company launched in 2001 to meet the acute needs of the oil and gas industry.

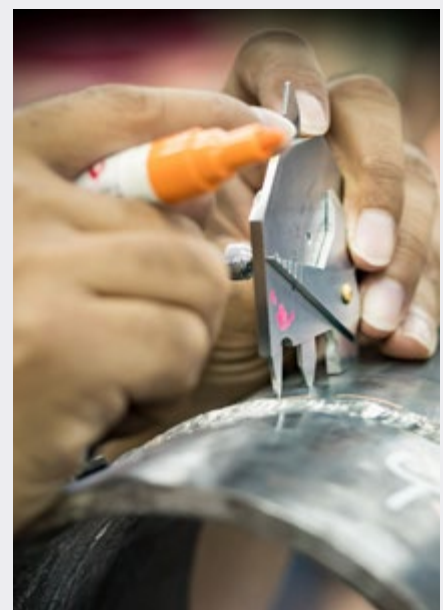
Throughout the years, SOGEC has gained substantial professional expertise in the sectors of cathodic protection, non-destructive testing, and heat treatment for pipelines, plant piping, well casings, tanks, vessels, jetties, steel reinforced concrete, and much more.

OUR SERVICES

- 1- Cathodic Protection
- 2- Corrosion Control
- 3- Pipeline Direct Assessment
- 4- Non-Destructive Testing
- 5- Heat Treatment
- 6- Inspection Services
- 7- Vapor Corrosion Inhibitor Solution (VCI)



Heat Treatment



Inspection Services



Heat Treatment



Non-Destructive Testing



Oil & Gas Services



Oil & Gas Services

IK Energy

Renewable Energy Systems



IK Energy (Isam Kabbani Energy) is a Saudi Arabia-based Engineering, Procurement, and Construction (EPC) corporation, prominent in the region as a provider of renewable energy systems. IK Energy offers a comprehensive solar PV system with full in-house capacities to its customers and stakeholders in order to retain world-class excellence in quality, service, and delivery.

IK Energy creates cost-effective and high-quality photovoltaic solar power systems for domestic, residential, commercial, industrial, oil and gas, and utility- scale sectors.

1- Solar PV Solutions:

On-Grid Systems, Off-Grid Systems, Hybrid Systems, Utility Projects, Pumping Systems, Solar Street Lights, Battery Energy System, and Solar EV Chargers.

2- Smart Parking Solutions:

Parking Slot Protection, Smart Boom Gate, Chain Barrier, Automatic Bollard, Automatic Number Plate Recognition, and Detection System.

3- EV Chargers:

AC Wall-Box Chargers, AC Pedestal Chargers, and DC Fast Charging Stations.



Solar Systems Installation



Smart Parking Solutions



Solar PV Solutions



EV Chargers



Solar PV Solutions

FULAZ

Steel & Metal Fabrication & Structure



KCG subsidiary Fulaz (Metal Fabrication Benchmark) is one of Kabbani Construction Group of companies in Saudi Arabia, specializing in heavy steel Structure and Strategic Storage Tanks. serves diversified market sectors in Saudi Arabia with high quality and prompt customer Production, covering customers' needs in highly budgeted sectors such as oil & Gas, Transportation, infrastructure, Building and construction, power generation, and industrial plant sector.

- 1- Project management
- 2- Engineering
- 3- Supply
- 4- Fabricating
- 5- Erection and commissioning

Fulaz serves the following markets:

- 1- Oil & Gas
- 2- Transportation & Infrastructure
- 3- Building & Construction
- 4- Power Generation and Industrial Plants

OUR SERVICES



Tank Erection



Skywalk Steel Bridge



Bridge Erection



Steel Structures



NWC Water tanks

BMC

Waterproofing & Thermal Insulation



KCG's first company is BMC (Waterproofing, Roofing, Thermal Insulation, Lining, EIFS Facades, Shoring and De-Watering). BMC has completed nearly 100 million square meters of complete waterproofing and damp proofing systems, larger than the entire city of Dhahran, since its inception in 1980 and over the last four decades. BMC has since created a specialized market for single-ply membrane systems to address the growing demand for superior waterproofing protection in modern buildings. BMC is the world's largest non-franchise single-ply membrane roofing contractor and distributor. BMC is constantly looking for innovative solutions and high-quality products by collaborating with reputable material producers in the waterproofing and building chemicals fields, gaining their trust and becoming their recommended applicator for their product line. BMC is continuously developing new services and business lines to its range of services, enhancing its market leadership position.

- 1- Substructures Waterproofing
- 2- Roofing & thermal insulation systems
- 3- Waterproofing for Wet Areas
- 4- Lining Systems for Water Containment Structures
- 5- Environmental Solutions (HDPE Geo-Synthetic Liner Systems)
- 6- De-watering and shoring systems
- 7- EIFS Façade Systems



EIFS Façade System



Environmental Solutions, Liner System



Roofing & Thermal Insulation System



Dewatering



Substructure Waterproofing

BMC S&D Unit

Shoring and Dewatering Services



Shoring & Dewatering Unit

In 2021, the BMC Shoring and Dewatering Unit (BMC S&D) was established to unify the liabilities of applied waterproofing and dewatering/ shoring systems. With BMC, the parent company of shoring and dewatering units and the leading waterproofing organization in the region, as well as our sister company, SPD, we will be able to provide a complete sub-structure service to our valued clients.

1. Shoring:

- Berlin Wall System
- Secant Pile System
- Sheet Pile System
- Diaphragm Wall System
- Micro Pile System
- Rock Nailing & Bolting System

2. Piling

3. Dewatering:

- Deep Well System
- Well Point System



Dewatering



Shoring



Shoring & Dewatering



Piling

BMC EIFS Unit

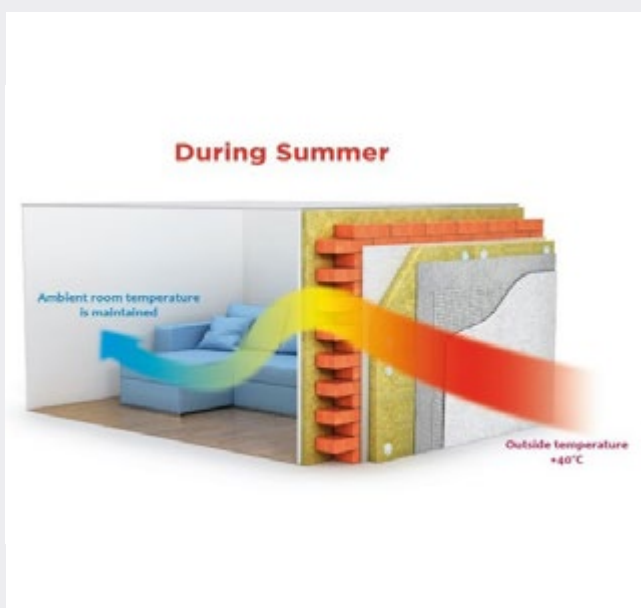
Exterior Insulation and Finishing Systems



BMC's new unit EIFS is dedicated to the supply and installation of Exterior Insulation and Finishing Systems (EIFS). EIFS is a multi-layered finishing system comprised of thermal insulation boards and renders that provides continuous insulation by design, giving architects design flexibility and aesthetics while helping to meet new energy codes.

Advantages of EIFS include energy efficiency, moisture control, design flexibility, and durability. It complies with Saudi Building Code and Saudi Electricity Company recommendations, and is the best performing exterior cladding in terms of thermal and moisture control.

- 1- Energy Efficiency
- 2- Moisture Control
- 3- Design Flexibility
- 4- Durability
- 5- Multi Layered system
- 6- New Construction or Retrofit
- 7- Commercial or Residential
- 8- Non load bearing



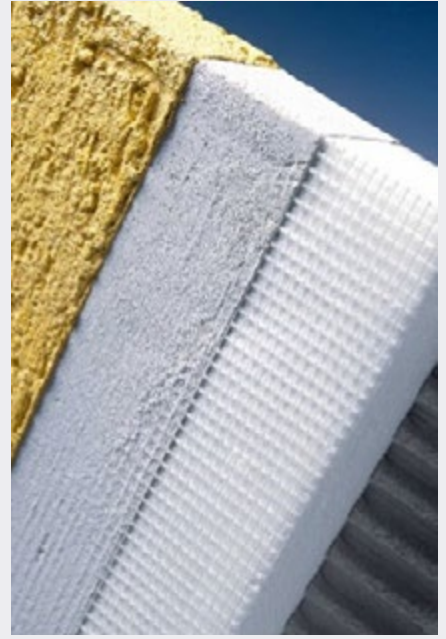
Energy Efficiency



Durability



Design Flexibility



Moisture Control



Exterior Cladding

CRES

Protective Coating Solutions, Insulation & Scaffolding



CRES (Industrial Flooring - Fireproofing - Insulation & Cladding Anti Corrosion Coats- Scaffolding Service) is a market leader in the construction and development industry, providing full engineering solutions, technical support, and high-quality applications for our specialized services. CRES is a specialized contracting company founded in 1985 to meet the increasing demand for industrial and specialized services.

OUR SERVICES

- 1- Blasting & Painting (Onshore-Offshore)
- 2- Fire Proofing
- 3- Industrial Insulation
- 4- Scaffolding
- 5- Rubber & Tank Lining
- 6- Shotcreting & Rock Bolts
- 7- Firestop
- 8- Resin Flooring
- 9- Refractory
- 10- Wrapping



Industrial Insulation



Shotcrete



Blasting & Painting



Firestopping



Rubber & Tank Lining



Complex Scaffolding



Flooring

STRUCTURAL SYSTEMS

Concrete Repair & Soil Improvement



Structural Systems (SS) was founded as a brand within the KCG family to cater to the growing demand and provide enough expansion room for all of KCG's specialized activities after experiencing remarkable success and growth in our concrete repair, structural strengthening, and condition assessment business. Understanding the cause of a concrete problem is necessary for developing suitable repair techniques. Because repair systems are not easily classified into a cookbook-type code with detailed design techniques, this understanding permits the solution to encompass both the cause and the impact. The quality of a structure, its perception of integrity, and its potential durability are nearly entirely determined by its construction.

OUR SERVICES

- 1- Structural Repair
- 2- Structural Protection
- 3- Structural Demolition
- 4- Corrosion Protection (Including Cathodic Protection)
- 5- Strengthening with Post-Tensioning Solutions
- 6- Geotechnical Solutions
- 7- Soil Stabilization and Micropiles
- 8- Heritage Restoration
- 9- Expansion Joints Installation
- 10- Leakage Treatment



Structural Repair



Expansion Joints Replacement



Architectural Restoration



Bridge Structural Rehabilitation



Heritage Restoration

KPT

Post-Tensioning Systems



KPT (Kabbani Post-Tensioning) is a highly specialized division within KCG that provides post-tensioning, expansion joints, bridge bearings, and other services to the Saudi market; KPT is one of several well-known foreign companies that operate in Saudi Arabia, including OVM International Ltd. and VERDUS.L. International

KPT has engaged in several landmark projects, including but not limited to: Avenues Riyadh, Diriyah Super Basement, Somou Towers, Riyadh Metro Elevated Stations, KSA - Khurais Road Interchange, KSA - Intersection of Al Haeer Road with Areehd Ghanimiah Entrance, KSA - Al Falak Intersection, KSA - SPARK Eastern Peripheral Road Project, KSA - Medical Village in Riyadh, KSA - R5 Settlement of New Administration Capital, Egypt.

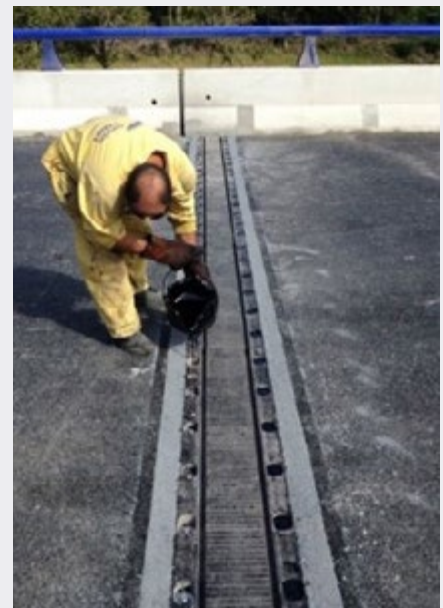
- 1- Post-Tensioning Systems - Slabs
- 2- Post-Tensioning Systems - Bridges
- 3- Bearings (Elastomeric, Pot, Spherical)
- 4- Expansion Jointss



Post-Tensioning System



Bearings



Expansion Joints



Post-Tensioning System



Post-Tensioning System



Post-Tensioning System

SUW

Waterproofing & Damp Proofing & Firestop



SUW (Saudi United Waterproofing Co.) specializes in contracting tasks involving waterproofing, fire-stopping, flooring, EIFS (Exterior Insulation Finishing System), and concrete rehabilitation. SUW, which was founded in 2002, initially exclusively provided waterproofing, fire-stopping, flooring, EIFS (Exterior Insulation Finishing System), and concrete repair services to SBC projects but has since expanded its client list to include a wide range of businesses within the Saudi market.

SUW's team is filled with high-caliber essential employees and talents, establishing the organization as an extraordinarily dependable and substantial contractor, focused solely on medium to large-scale contracts and projects.

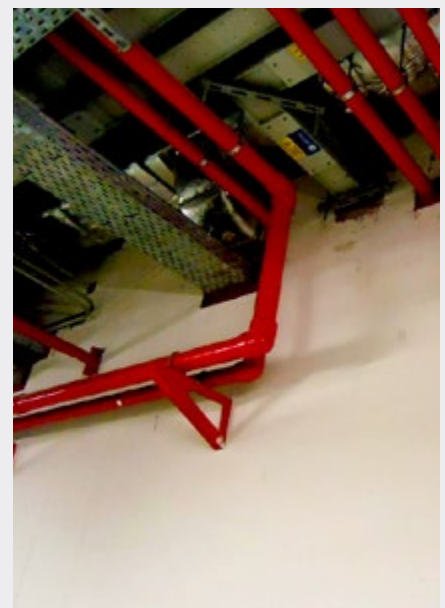
- 1- Waterproofing
- 2- Damp Proofing
- 3- Roof & Thermal Insulation
- 4- Lining Systems
- 5- EIFS (Exterior Insulation Finishing System)
- 6- All Roof Retrofit Systems
- 7- Industrial & Commercial Flooring
- 8- Firestop
- 9- Concrete Repair



EIFS System



Waterproofing



Firestop



Flooring



Flooring



Waterproofing

KAC

Fit-out Contracting & Facade Engineering



KAC (Kabbani Architectural Concepts) specializes in Design and Build Construction for residential and commercial buildings, as well as towers and industrial plants. KAC manages the complete construction project from start to finish using project management procedures and sustainable solutions.

KAC is dedicated to being the “Builder of Choice” by providing outstanding service. Our focus is on simplicity, innovation, excellence, proactivity, and partnership in order to provide value-added services to our clients.

OUR SERVICES

- 1- Mechanical, electrical, and plumbing services
- 2- Facility Management
- 3- Fit-Out & Interior Contracting Activities
- 4- Furniture Selection and Procurement
- 5- Design & Build Contracts Solutions



Fit-Out & Interior Contracting Activities



Modular Construction



Facility Management



Furniture Selection and Procurement

KEM

Electromechanical Contracting Company



KEM (Electromechanical Contracting), a pioneering force in the Engineering, Procurement & Construction sector (EPC), takes pride in its broad range of Mechanical, Electrical, and Plumbing operations (MEP) for medium and large residential, commercial, industrial, medical, and government buildings.

Through dedicated devotion to its clients and various important services supplied without compromise by hundreds of skilled technicians while overseen and monitored by a synergetic team of highly experienced managers, KEM maintains a respectable position as a leading contributor to the MEP industry.

OUR SERVICES

- 1- Infrastructure
- 2- Fire Fighting Systems
- 3- Low current systems
- 4- Low & medium voltage networks and substations
- 5- Alternative Power Supply
- 6- HVAC Systems
- 7- Air & Gas networks and Pumping Stations
- 8- Pumping Stations
- 9- Plumbing/Piping Systems
- 10- Laboratories, Fume hoods
- 11- Tunnel Ventilation System - TVS



MEP Works



Electrical Substations



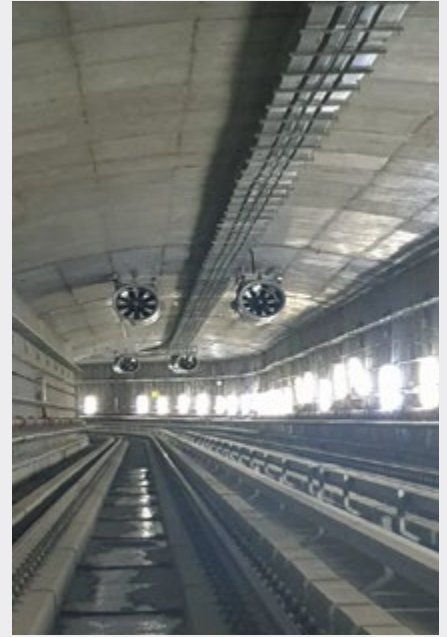
Low Current Systems



Plumbing & Piping Systems



Electrical Works



Tunnel Ventilation Systems



Plumbing & Piping Systems

INSHAA



Concrete Precast Fabrication & Erection

INSHAA (Inshaa company for concrete products and general contracting) has extensive experience in the design, fabrication, and construction of precast concrete elements such as composite and solid wall panels, wall cladding, columns, beams, stairs, miscellaneous items, and hollow core slabs with thicknesses ranging from 50 mm to 500 mm.

All external precast parts would have a grey or colored finish with a treated surface. We offer value engineering solutions to save costs and convert traditional constructions to precast structures. One of the key criteria in design/production to achieve higher quality, time savings, and durability for project delivery is the development of precast concrete structures to be completed on modular buildings.

OUR SERVICES

- 1- Modular Construction
- 2- Hollow core slabs
- 3- PC Cladding
- 4- PC Columns, Beams, & Staircases
- 5- PC Sandwich Panels
- 6- PC loading Bearing Panel
- 7- PC Boundary Walls
- 8- Hollow core Boundary walls
- 9- PC Double Tee slabs



Inshaa factory



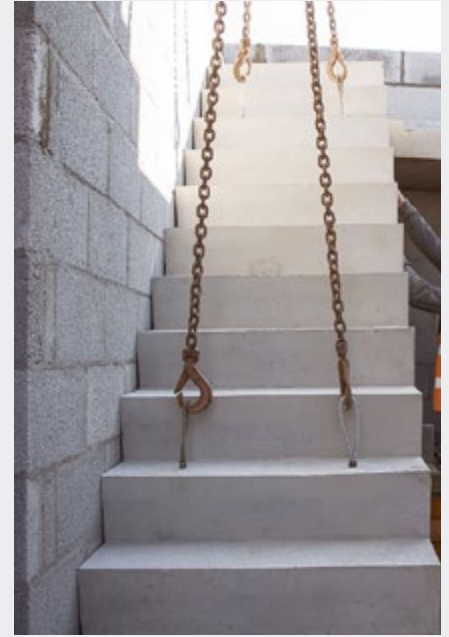
PC boundry walls



Hollow Core Boundary Wall



PC Load Bearing Panel



PC Staircases



Hollow Core Slabs

SPD

Airports, Roads & Infrastructure



SPD (Special Projects Division) is in charge of various infrastructure projects. It works on airport runways, road construction, utilities, telecommunications, landscape, and hardscape projects for the public and private sectors.

SPD is committed to quality and customer service. It completes each project on schedule and within budget while maintaining the highest levels of professionalism, excellent quality, and utmost concern for the safety of its personnel and the environment.

OUR SERVICES

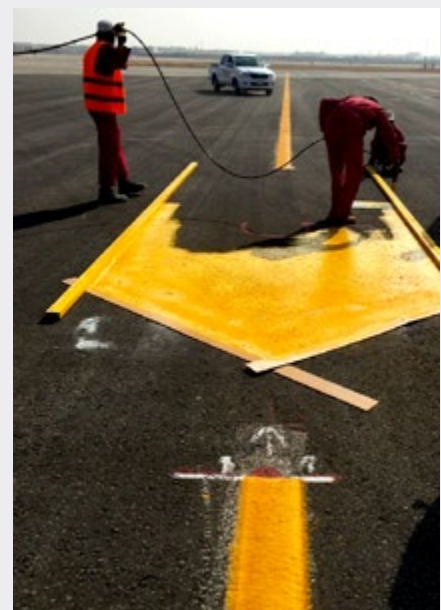
- 1- Airports
- 2- Roads: Earthworks, New Construction, & Maintenance
- 3- Utilities: Water, Sewage, & Storm networks
- 4- Landscape & Hardscape
- 5- Telecom networks



Road Construction



Storm Networks



Road Marking



Culvert



Storm Networks



Enabling Works



Road Maintenance

ACMS

Airfield Construction & Maintenance



ACMS (Airfield Construction & Maintenance Services) is a Saudi enterprise that combines KCG's knowledge and resources. ACMS has a regional and international reputation for constructing and maintaining commercial and military airfields.

ACMS has extensive airside expertise in all airfield pavement development and maintenance facets. ACMS has designated airfield maintenance personnel to do routine maintenance to ensure that the airfield always remains operational.

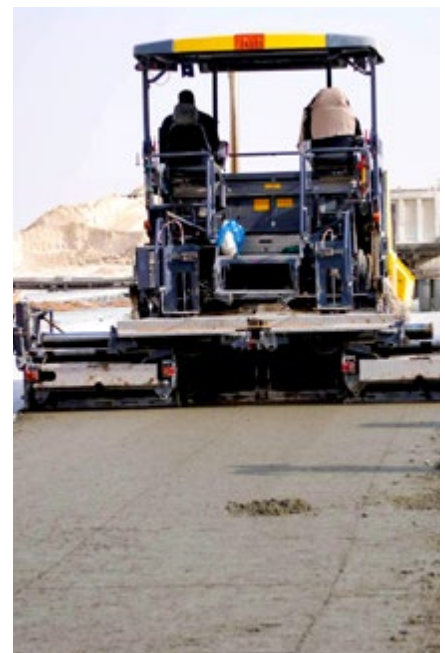
- 1- Airfield Construction
- 2- Airfield Maintenance
- 3- Airfield Treatment
- 4- Airfield Repairs
- 5- Concrete Paving
- 6- Qualitative Analysis



Airfield Treatment



Airfield Maintenance



Airfield Repairs



Concrete Paving



Airfield Repairs



Airfield Construction

Digital Construction Unit



Digital Engineering & Digital Construction Applications

The Digital Construction Unit (DCU) is a new subsidiary of KCG that was developed as part of the company's effort to maintain effective precedence in the Saudi market, as big construction projects rely entirely on the most advanced technical construction applications. To produce high-quality services and respond to rapidly changing industry requirements and standards, the division depends on the substantial industry experience of its leadership and team and advanced construction technology processes. DCU aspires to be known as an industry leader for its expertise in engineered building processes and its creative and original approach to cutting-edge technology and delivery systems.

1- Digital Design, Virtual Design & Construction:

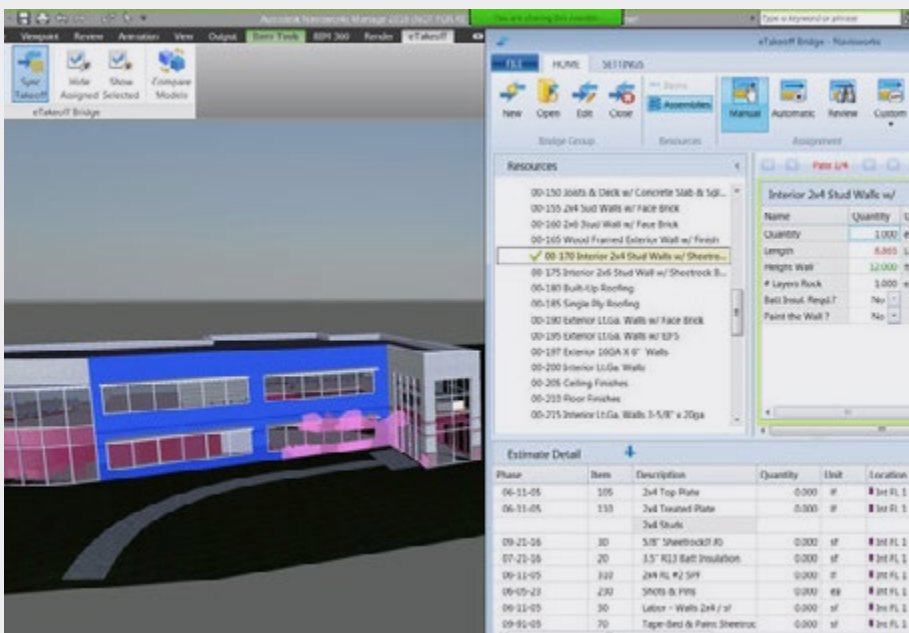
Engineering Services, BIM Services, Virtual Reality & Augmented Reality (VR & AR), 4D Planning, 5D Cost Estimation, Asset Information Modeling, and Facility Management Integration.

2- Reality Capture & Surveying:

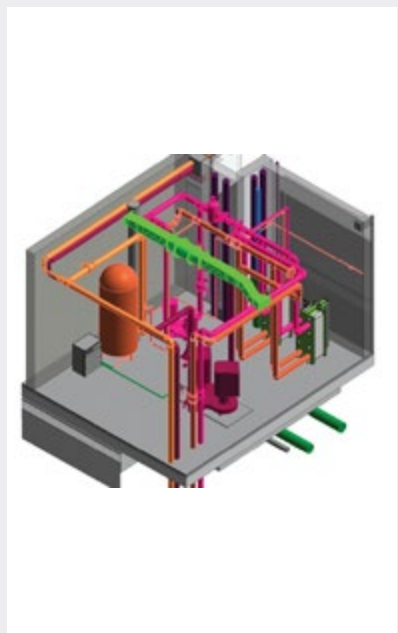
3D Laser Scanning, Mobile Mapping, 3D Aerial Survey

3-Digital Construction Applications:

Digital Fabrication, Prefabricated Buildings, Modular Buildings, Buildings 3D Printing, and other digital construction applications.



5D Cost Estimation



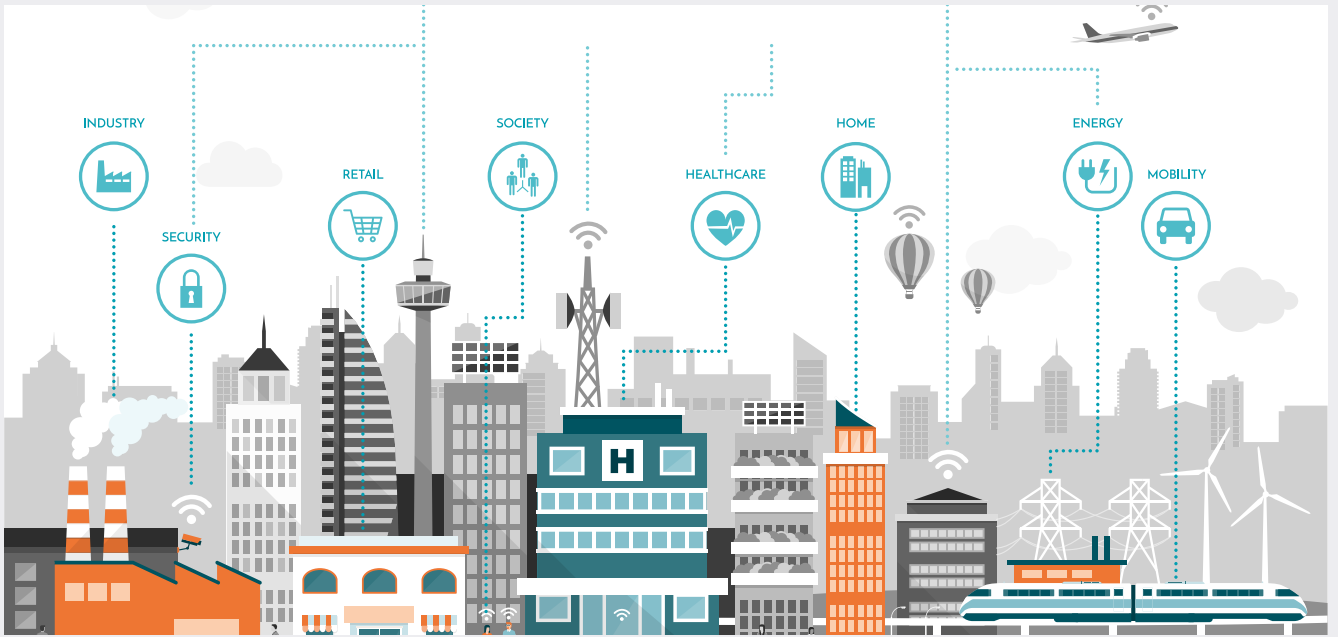
BIM Services



Laser Scanning



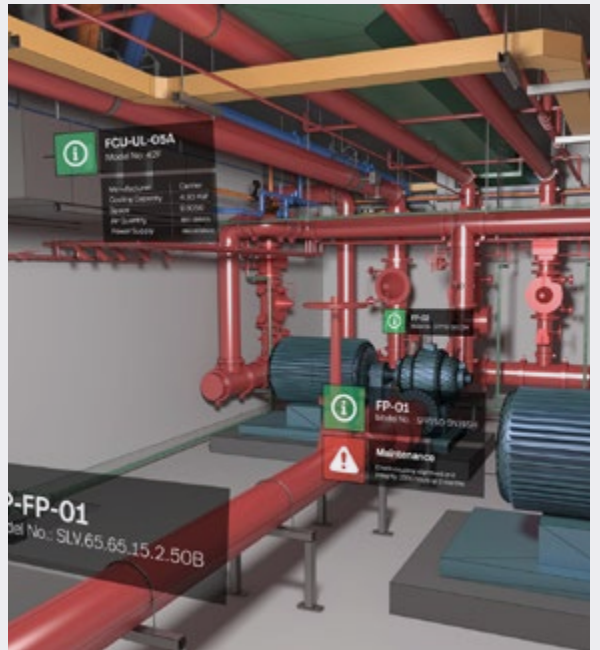
Mobile Mapping



Digital Construction Applications



Surveying & Reality Capture



Facility Management integration

Inspectech



Infrastructure Management Solutions

Inspectech (Infrastructure Management Solutions) has merged structural inspection with cutting-edge technology to become the Middle East's first engineering firm offering Advanced *Civionic Solutions (Civionics is the combination of civil engineering and electronics – i.e., utilization of the latest electronic and information technology in civil applications). This dynamic section of KCG has focused all of its intellectual and technological resources on understanding the present state of infrastructures. Similarly, it has collaborated closely with leading international firms to develop practical engineering solutions that sustain and extend the lifecycle of structures at the lowest possible cost. Inspectech examines a structure closely to address its durability and serviceability while staying within the project budget.

1- Structural Engineering & Evaluation

- Structural Condition Assessment
- Special Inspections
- Structural Analysis
- Development of As-Built Drawings
- Asset Management
- Structural Load Testing & Rating

2- Testing & Instrumentation

- Non-Destructive Testing
- Geophysical Imaging & Survey
- Subsurface Utilities Engineering
- Structural Health Monitoring
- Infrared Thermal Imaging
- Pipeline Services



Structural Monitoring



Fire Damage Assessment



Structure Scan



Bridge Load Test



Ultrasonic Pulse Velocity



Hammer Test



Corrosion Mapping

Archeotech

Archaeological Field Management Solutions



Archeotech (Archeology Field Management Solutions) intends to bring together experts in Archeological Investigation, Heritage Consultancy, Geophysical Investigation, Geomatics, Photogrammetry, and Digital Imagery to help with the research and protection of archaeological and cultural values.

Archeotech is also uniquely positioned to leverage its sister firm Inspectech's extensive knowledge in existing structure condition assessment and subsurface imaging and evaluation. Inspectech's international partner, "Geostudi Astier - Italy", has extensive experience in geophysical applications in archaeology.

OUR SERVICES

1- Heritage Consultancy:

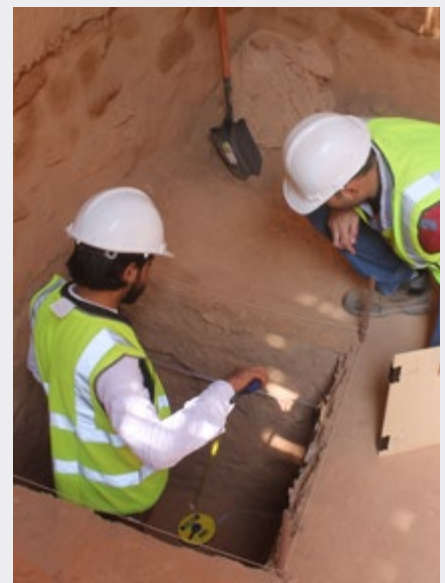
- Early Development Advice
- Rapid Site Assessment
- Heritage Impact Assessment

2- Archeological Site Investigation:

- Evaluation
- Archeological Excavation
- Archeological Watching Brief

3- Supporting Services :

- Condition Assessment
- HIA for Existing Structures





TWINTEC

Jointless Flooring Contracting



Twintec Saudi, a specialized steel fiber reinforced concrete 'Jointless' flooring contractor, provides a personal product with a high level of performance, environmental sustainability, and aesthetics worldwide through a unique total offer concept of Design-Build-Guarantee delivering superior slab using Steel Fibre Reinforced Concrete (SFRC) jointless flooring solution with excellence in design, high quality, and life cost value.

- 1- Freeplan® - 'Jointless' SFRC Ground Bearing Floor Slab.
- 2- Freeplan® XT - 'Jointless' SFRC External Yard
- 3- Twinplan® - 'Jointless' Defined Movement SFRC Floor Slab
- 4- Twintec® ULTIMATE - Seamless Floor Slab
- 5- Twintec® STRUCTURAL - SFRC Structural Raft Foundations
- 6- Twintec® PLUS - Surface Enhancer
- 7- ECO Freeplan® - Flooring with Reduced Environmental Impact.
- 8- TSR - Twintec Services and Renovation



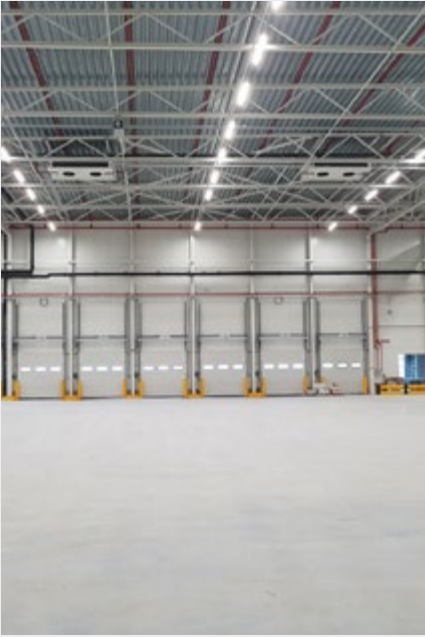
Freeplan



Freeplan XT



Twinplan



Twintec Ultimate



Twintec Structural



ECO



Freeplan

PLEKO

Exterior Insulations & Finishing Systems



Pleko Systems Saudi is a collaboration between KCG and the internationally famous Pleko Systems International. Pleko is an industry pioneer with many years of expertise in the Exterior Insulation and Finishing System (EIFS) business. Pleko has diversified over the years to encompass all building chemicals to provide creative and original solutions to its alliances, partners, and customers by continuously using current technologies.

Pleko developed its revolutionary EIFS (Exterior Insulation and Finishing System) technology in Germany in the 1960s. Years of research and development in the United States, combined with intensive field testing and diversification initiatives, have resulted in the cutting-edge technology portfolio that Pleko now offers.

OUR SERVICES

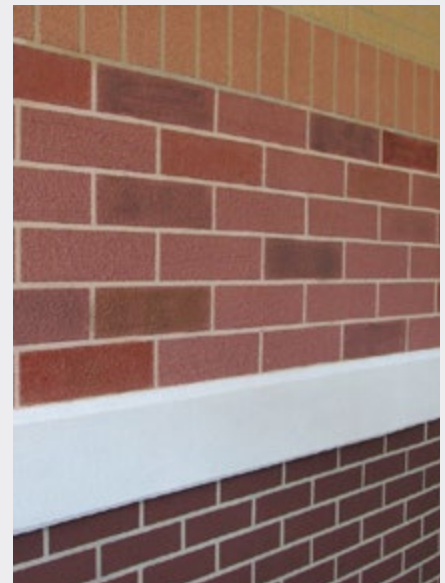
- 1- Exterior Insulation & Finishing Systems (EIFS)
- 2- Specialty Finishes
- 3- Construction Chemicals
- 4- Floor Hardeners, Curing & Coatings
- 5- Tile Adhesives & Grouts
- 6- Waterproofing & Weather Barriers
- 7- Skim Coats & Colored Renders
- 8- Concrete Refurbishment
- 9- Self-Leveling Compounds
- 10- Dust Control & Soil Stabilization



Self-Leveling Compounds



Tile Adhesives & Grouts



Specialty Finishes



Construction Chemicals



Skim Coats & Colored Renders



Exterior Insulation & Finishing Systems (EIFS)



Concrete Refurbishment

Kabbani Concord Tunneling

Micro-tunneling & Tunneling Technologies



KCG expanded its portfolio in the infrastructure field by partnering with Concord to provide the latest Micro-tunneling technologies to the Saudi market. We believe that the combined capabilities and experiences of both companies got together to tackle the most challenging infrastructural projects, and qualify KCG for complex tunneling projects with full & integrated contracting solutions.

Kabbani Construction Group (KCG) is a market leader serving the construction industry with a diversified portfolio of engineering and contracting solutions.

Concord is a market leader in Infrastructure utilities and transportation projects. The JV is capitalizing on the utilization of latest technologies and its workforce qualification to provide cost efficient solutions that exceed clients' requirements and to build the aimed reputation as one of the infrastructure construction leaders in the Middle East.

- 1- Utility tunnels
- 2- Transportation tunnels
- 3- Water & wastewater tunnels





NWC Micro - Tunnel 3500 mm - Jeddah



Tunneling from Ismailia Road Tunnels

KMW

Marine Works & Infrastructure



KCG and Maridive Offshore Projects (MOP) have partnered to provide offshore projects on a turnkey basis. KCG with its with a diversified portfolio of engineering and contracting solutions in the construction industry, while MOP is a market leader in OffShore projects.

MOP aims to supplement the Group's fleet with integrated engineering, survey and diving personnel who can operate and maintain offshore infrastructure. The Management of MOP decided to build this team of Divers by only recruiting engineers to problem solve and save significantly on delivering projects. This Problem-solving culture has become at the core of the company to build the aimed reputation as one of the field's leaders in the Middle East.

We believe that combined capabilities and experiences of both companies in engineering, equipment, and Project Management got together to tackle the most challenging infrastructural projects and qualify KCG for complex Offshore and Onshore Construction Projects with full & integrated contracting solutions.

- 1- Offshore construction
- 2- Onshore construction
- 3- Maintenance





Offshore Construction



Maintenance

KST

Soil Stabilizing Techniques



KST is the newest addition to the KCG group of companies, fully dedicated to providing Soil Stabilization Solutions through innovative products and techniques developed in line with Kabbani Construction Group's mission and vision to contribute to the advancement of the construction sector within Saudi Arabia. KST is dedicated to introducing environmentally friendly solutions aligned with Saudi Arabia's 2030 Vision.

- 1- Soil Stabilization and Protection
- 2- Soil Reinforcement
- 3- Erosion Control
- 4- Slope Protection
- 5- Channels and Bund Lining

KST utilizes the following innovative solutions :

- 1- Geosynthetic Cementitious Composite Mat (GCCM) is a unique solution manufactured by **Concrete Canvas** that replaces ordinary concrete used in soil protection applications
- 2- Polymer and Enzymatic Sprayed Soil Stabilizers
- 3- Geocell soil reinforcement mesh



Sprayed Soil Stabilizers



Geocell Soil stabilizing and reinforcement



Slope Protection



Channel Lining

KCG

REGIONAL PRESENCE

Kabbani Construction Group's market is not restricted to the Kingdom of Saudi Arabia only. In fact, KCG's regional footprint extends to other countries like Egypt, UAE, Oman and many others.

Picture: NEOM | KSA



KCG Emirates & IMKK

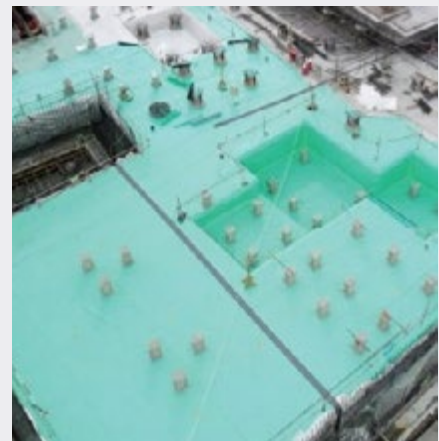


KCG Emirates was founded in September 2006 as a division of KCG Saudi Arabia to address the rising demand for quality specialized contractors in waterproofing. IMKK, a joint venture with Liwa Trading, was formed in order to enter the UAE's industrial sector. ADNOC is one of its many clients.

In ten years, KCG Emirates and IMKK have become market leaders in the UAE for waterproofing, coating, and concrete repair; KCG Emirates has completed the substructure and superstructure waterproofing packages for the Louvre Abu Dhabi, one of Abu Dhabi's most defining landmarks.

These are some of the landmark projects KCG Emirates has contributed to:

- Dubai Airport Concourse 4.
- Abu Dhabi Airport Midfield Terminal.
- Barakah Nuclear Power Plant.
- Dubai Mall Car Park.
- Jebel Ali International Airport.
- Abu Dhabi Financial Center & Cleveland Clinic.



KCG Egypt, A-BUILD Egypt & SCC

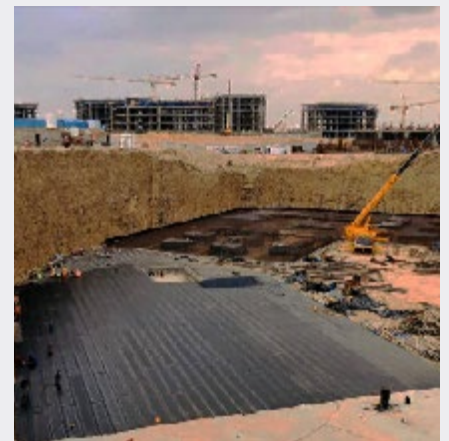


KCG Egypt is the sole agent/distributor and approved applicator for many prominent international manufacturers, as well as a plethora of local manufacturers and specialist construction materials.

A-Build Egypt had a pioneering role in introducing the airfield construction activity within KCG, and is also a market leader specialized contractor in the following domains:

- Waterproofing and Damp Proofing
- Lining and Geomembranes
- Shotcrete and Thermal Insulation
- Concrete Repair, Injection, and Fire Proofing
- Industrial Flooring
- Premoulded Expansion Joints Systems
- Maintenance of Oil Facilities
- Construction of Air Fields

SCC (Specialized Contracting Company) is an Egyptian joint venture between Kabbani and Marasem that intends to deliver our extensive list of specialized services exclusively to Marasem projects. The experience and partnerships of both organizations with many of the key providers in this industry, whether in a product, machinery, or know-how, position them to deliver the greatest service to their customers.



Regional Presence

A-BUILD Lebanon

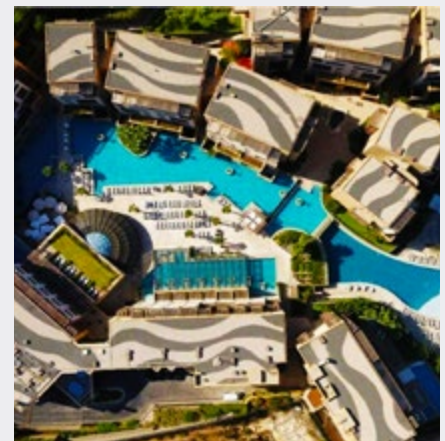


A-Build Lebanon Contracting & Trading Co. was established in Lebanon in 1993 in response to a growing concern about construction, safety, and environmental issues. Furthermore, our solutions have been carefully selected to meet today's growing demand for innovative engineering materials.

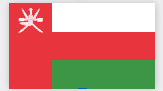
A-Build can confidently assure its customers of its premium quality services, in the supply and installation of:

- Waterproofing & Damp Proofing
- Concrete Repair & Protection
- Special Floor Coatings
- Light Weight Foam Concrete & Environmental Engineering (Ponds & Landfill Lining)

A-Build Lebanon is the distributor and approved applicator for several worldwide famous manufacturers and products, relying on a highly-skilled, specialized, and motivated staff of engineers, supervisors, and applicators.



KCG Oman



KCG Oman was founded in April 2010 as a branch of KCG Saudi Arabia to address the rising demand in the Oman market for quality specialized contractors in the field of construction protection.

KCG Oman has been growing steadily over the last few years and is well on its way to becoming a market leader in the waterproofing, concrete restorations, and floor coating sectors. This is due to the company's consistency in high-quality services, complete client satisfaction, and the Kabbani name and reputation.

KCG Oman is continually looking for high-quality projects with landmark status, such as the Muscat International Airport, Salalah International Airport, the National Bank of Oman, and the Wave Golf Course.

KCG Oman has completed a 3 million O.R. Terrazzo flooring and bridge deck waterproofing solution for the Muscat International Airport MC3 project.



Regional Presence

KCG Bahrain



CG Bahrain was founded in December 2009 as a branch of KCG Saudi Arabia to address the Bahraini market's strong need for quality and skilled contractors in construction protection and repair.

Among the services that KCG Bahrain provides to its clients are:

- Waterproofing
- Damp Proofing
- Thermal Insulation
- Lining Systems
- Concrete Repair
- Fireproofing
- Firestop
- Blasting & Painting
- Insulation & Cladding
- Cathodic Protection
- Heat Treatment
- Non-Destructive Testing

We intend to become market leaders and industry leaders by spreading our experience to adjacent nations and giving our unique and highly specialized services to the region.



KCG Kuwait



After first entering the market in 2014, KCG Kuwait was legally created in 2016 as another branch of KCG Saudi Arabia to address the growing demand in the Kuwaiti market for quality specialized contractors in the construction industry.

Due to the Kabbani name's impressive reputation, KCG Kuwait has been able to land major and high-profile projects such as the new passenger terminal building at Kuwait International Airport and the historic Al Salam Palace, where KCG Kuwait provided flooring works, as well as the Ali Al Salem Air Base project, where they contributed with excavation, backfilling, and concrete for aprons.

KCG Kuwait is steadily establishing a respected name in the business by providing high-quality services such as waterproofing, concrete repair, and flooring, as well as complete client and customer satisfaction.

QCTC



QCTC (Qatar Construction Technique Company) is one of the top companies in the state of Qatar's specialized contracting services sector. With considerable experience in industrial repair, rehabilitation, and maintenance for the region's public and private sectors, QCTC has become a pioneer in the specialist subcontracting category. QCTC is a global construction and development industry leader, providing comprehensive engineering solutions, technical support, and high-quality applications for our specialized services.



KCG

PROJECTS HIGHLIGHTS **IN KSA**



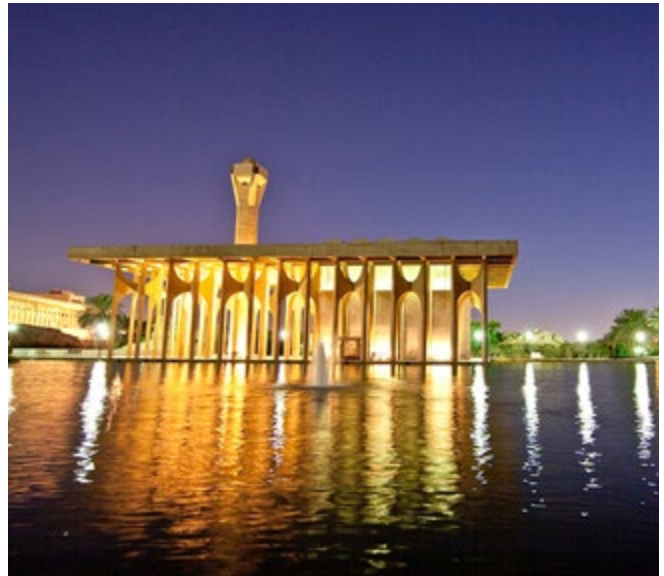
We are proud to be a recognized contactor on the most iconic projects taking place in KSA and the Middle East over the years.

Picture: Al Ula | KSA



1. King Fahd University of Petroleum & Minerals (KFUPM)

Project Owner:	King Fahd University of Petroleum and Minerals.
Location:	Dhahran, KSA.
Year of Completion:	2018.
Scope of Work:	Turnkey construction including Fit-out & MEP. (Central store warehouse, 312 villas, 2 multistore parking), Landscape development, Infrastructure development, Enabling works and Road construction. Substructure waterproofing and inverted torch on membrane roofing systems.
By Divisions:	KAC, KEM, SPD & BMC



2. Construction of NWC Water Tunnel

Project Owner:	National Water Company (NWC).
Location:	Jeddah, KSA.
End Date:	On Going.
Scope of Work:	Microtunneling of the main tunnel passing under Al Haramain train with a diameter of 3500 mm, length of 960 lm, and depth of 55 m underground
By Divisions:	SPD and Concord jointly



3. AlUla Airport

Project Owner:	Royal Commission for AlUla (RCU).
Location:	AlUla, KSA.
End Date:	2020.
Scope of Work:	Supply & application of 65,000 sqm concrete pavement of AlUla Airport at the Northern area of the KSA
By Divisions:	ACMS



4. Developmental Housing Program Wave 3

Project Owner:	National Housing Company.
Location:	Jeddah, Najran, Ahsa, Makkah, KSA.
End Date:	On Going.
Scope of Work:	Design & build for all disciplines. Testing, commissioning and handover for 1635 units with different models from one bedroom to four bedrooms distributed over eight regions in KSA. Supply & installation of EIFS façade system.
By Divisions:	KAC, KEM, and BMC



5. Riyadh Metro - Line 3

Project Owner:	Arriyadh Development Authority.
Location:	Riyadh, KSA.
End Date:	2021.
Scope of Work:	MEP works for seven deep stations, including low & medium voltage networks, substations, HVAC (Heating, Ventilation & Air Conditioning) systems, and tunnel ventilation system.
By Divisions:	KEM



6. King Salman International Convention Center (KSICC)

Project Owner:	Ministry of Finance.
Location:	Al Madinah, KSA.
End Date:	2020.
Scope of Work:	Waterproofing for car park, wet areas, planters, and fountains. Roofing system with tapered thermal insulation of the buildings' roof.
By Divisions:	BMC



7. Rehabilitation of One Million Tank Reservoir

- Project Owner:** The Saline Water Conversion Corporation (SWCC).
- Location:** Makkah, KSA.
- End Date:** On Going.
- Scope of Work:** Structural rehabilitation, Concrete repair, 3D Laser scanning and 3D Modeling for the existing condition of the tank. Replacement of the existing waterproofing system with a new EVA liner system and leak detection system, with total built-up area of 90,000 sqm & 30 m height, dam 460 m x 20 m.
- By Divisions:** SPD, Structural Systems, BMC & DCU



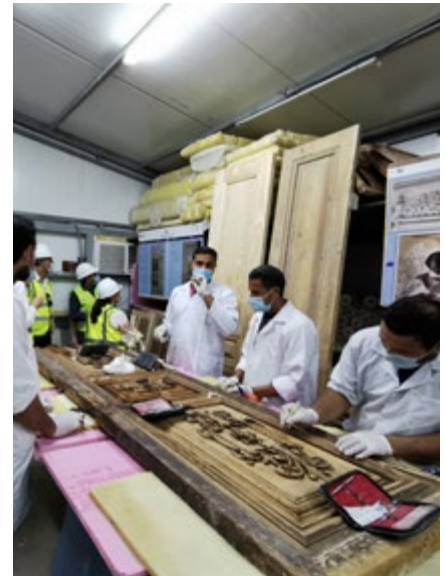
8. Riyadh Metro Project Skyway

Project Owner:	Arriyadh Development Authority (ADA).
Location:	Riyadh, KSA
End Date:	2019.
Scope of Work:	Engineering, fabrication, supply and erection of steel skyway bridge connecting metro station with King Khalid International Airport.
By Divisions:	FULAZ



9. Jeddah Historical City - Xenel House

- Project Owner:** Saudi Ministry of Culture (MOC).
- Location:** Jeddah, KSA.
- End Date:** 2020.
- Scope of Work:** Structural condition assessment, design for structural strengthening and soil stabilization. Application of structural strengthening, conservation, fine restoration and architectural restoration.
- By Divisions:** Structural System & Inspectech



10. Steel Water Tanks for NWC

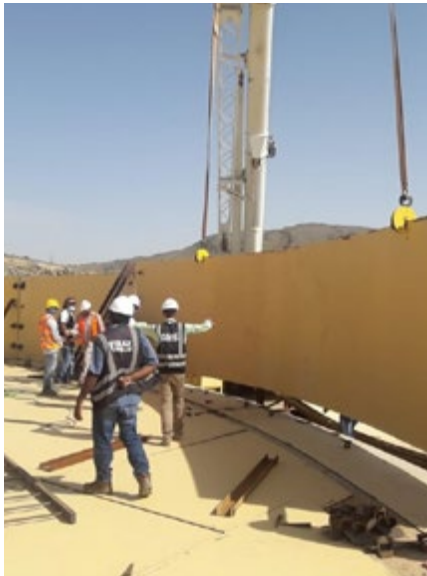
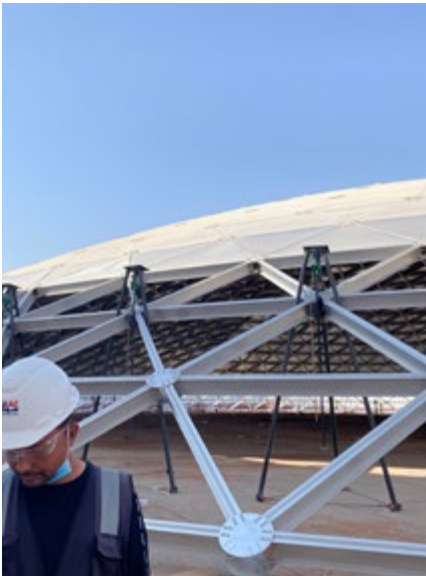
Project Owner: National Water Company (NWC).

Location: Riyadh, Makkah, Abha, KSA.

End Date: 2021.

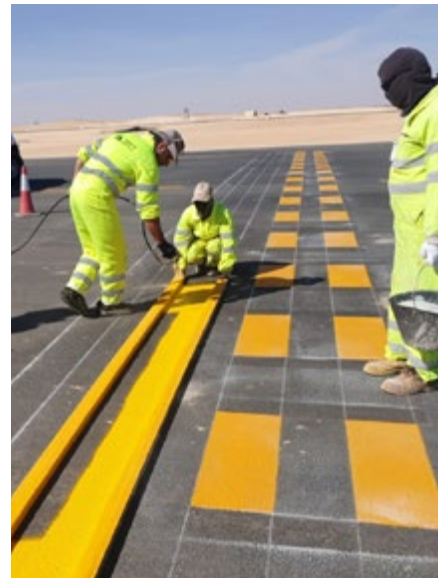
Scope of Work: Engineering, fabrication and erection of eight steel water tanks for NWC in Riyadh, Makkah and Abha, with a total water capacity of 1,190,000 cubic meter.

By Divisions: FULAZ



11. AMAALA Airport

Project Owner:	AMAALA.
Location:	Al Wajh, KSA.
End Date:	2022.
Scope of Work:	Construction of the runway, taxiways and the aprons.
By Divisions:	SPD



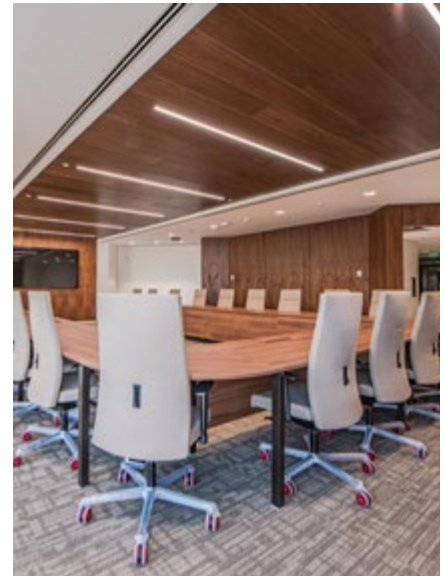
12. ARAMCO General Construction & Maintenance

Project Owner:	ARAMCO.
Location:	Central, Western, Eastern Regions, KSA.
End Date:	On Going.
Scope of Work:	Residential, building trades & general maintenance, building maintenance & renovation services, concrete repair & civil works, building trades & related services, installation of security equipment, facilities installation & restoration services, communication outside cable plant facilities instillation.
By Divisions:	COSMA



13. New Head Quarter For Ministry of Energy

- Project Owner:** Ministry of Energy, Industry and Mineral Resources.
- Location:** Riyadh, KSA.
- End Date:** On Going.
- Scope of Work:** Complete Fit-out works for architectural, electrical, mechanical, audio and video. Supply & install the complete furniture for a 20 floors tower with built-up area of 55,000 sqm.
- By Divisions:** KAC and KEM



14. SICM Dammam Crude & Gas Development Project

Project Owner:	Saudi Aramco.
Location:	Dammam, Saudi Arabia.
End Date:	On Going.
Scope of Work:	Non-Destructive Testing and inspection services for the onshore pipeline.
By Divisions:	SOGEC



15. Matal Al Hada Palace

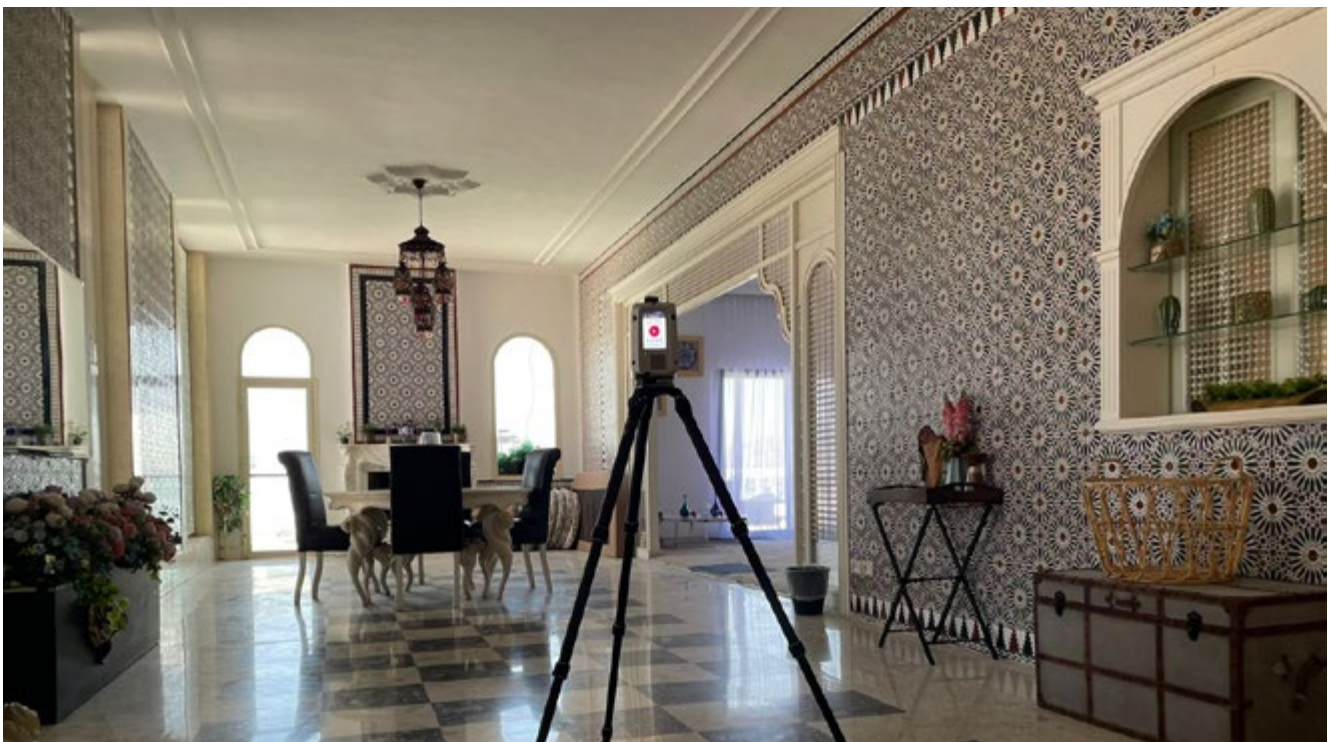
Project Owner: AMSAD Architectural Associates.

Location: Al Taif, KSA.

End Date: 2022.

Scope of Work: As-built package through 3D laser scanning, 3D Revit Modeling and 2D Documentation for the as existing condition of the building for all disciplines.

By Divisions: DCU



16. Al-Khafji Joint Operations (KJO)

Project Owner:	Aramco Gulf Operations Company Limited ("AGOC") and Kuwait Gulf Oil Company Ltd.
Location:	Al-Khafji, KSA.
End Date:	15 years of agreement ends in 2036.
Scope of Work:	Oil and gas exploration, development and production in the offshore area. Supervision, manpower, materials & equipment of blasting & painting activity including scaffolding to repair the platforms in offshore area.
By Divisions:	CRES



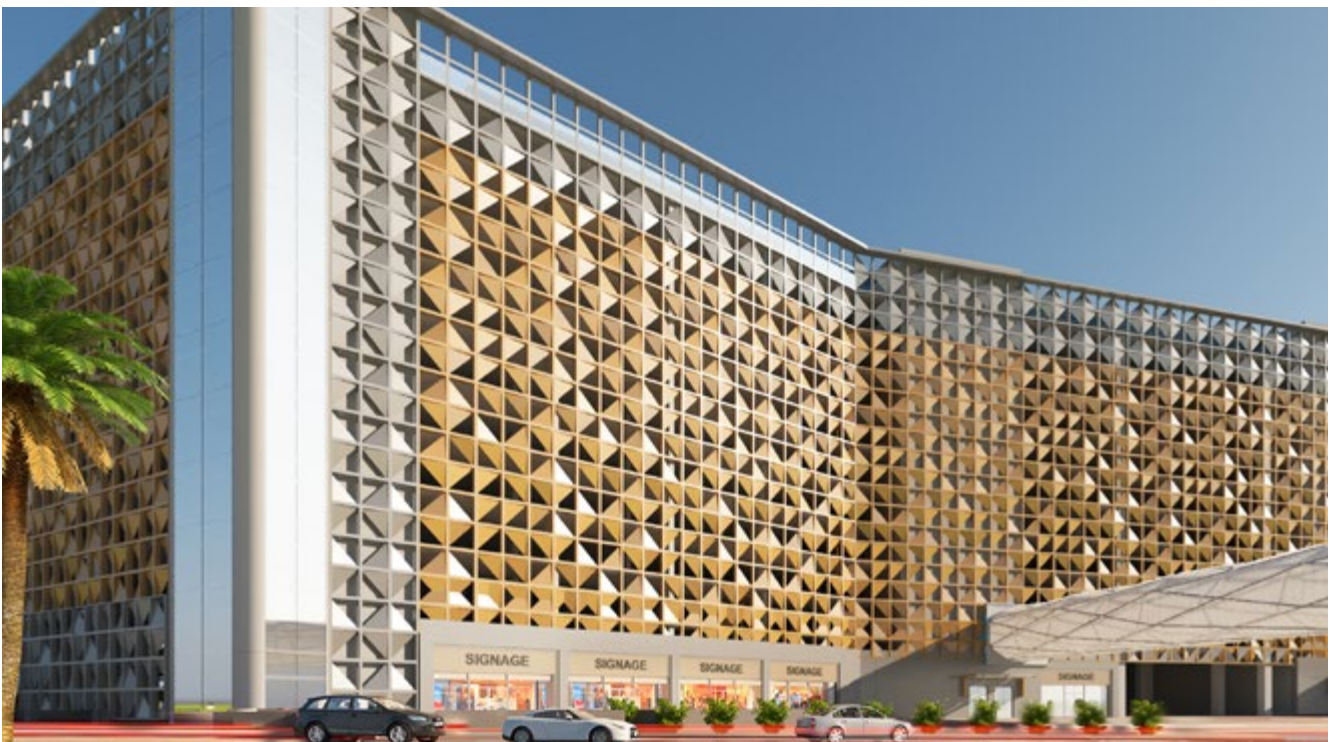
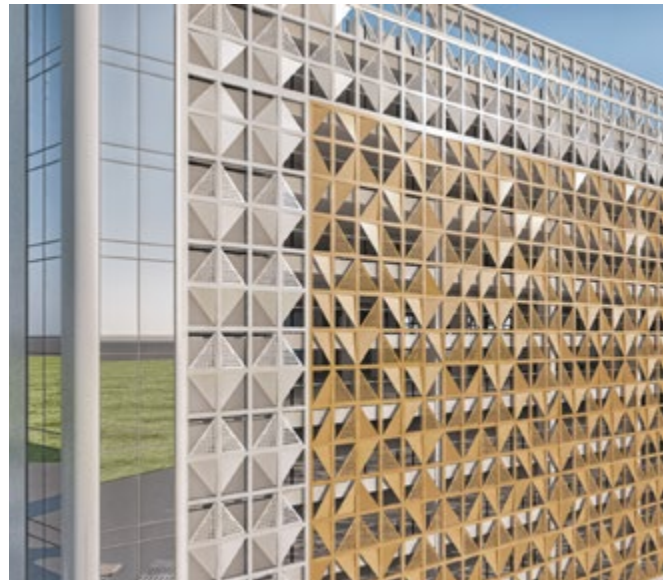
17. Saudi Post (SPL) Distribution Centers and Warehouses

Project Owner:	Saudi Post.
Location:	Dammam, Riyadh and Jazan, KSA.
End Date:	2022.
Scope of Work:	Freeplan flooring across a total area of 2,600 sqm.
By Divisions:	Twintec



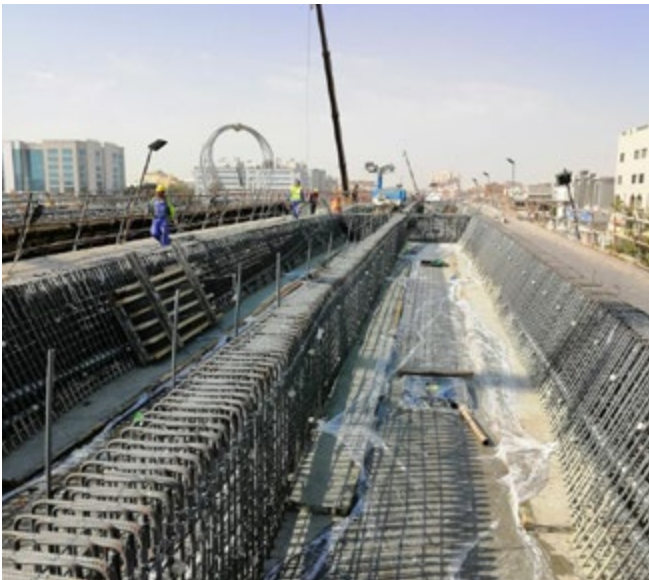
18. King Abdullah Financial District (KAFD) Car Park

Project Owner:	King Abdullah Financial District Management & Development Co.
Location:	Riyadh, KSA.
End Date:	August 2023.
Scope of Work:	Design, Build, Procurement, Testing, Commissioning and Handover for Construction of the Car Park including all disciplines (Structure, Architectural, Mechanical, Electrical, Vertical Transportation, Façade, Landscape and Traffic Management works respectively), in addition to four skywalk bridges to be built and connected to the adjacent towers.
By Divisions:	KAC, DCU



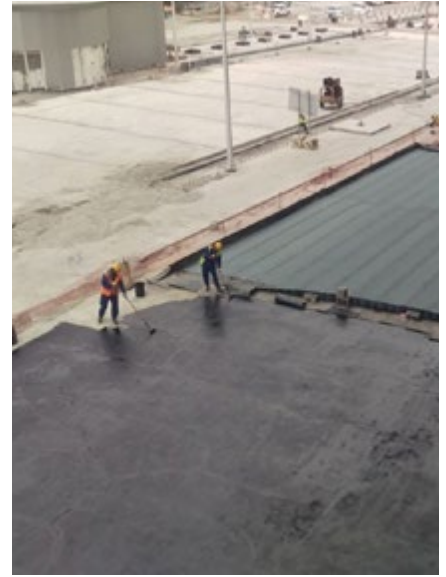
19. Al Falak Roundabout Interchange Bridge

Project Owner: Jeddah Municipality.
Location: Jeddah, KSA.
End Date: 2020.
Scope of Work: 1 elevated cast in situ bridge – 10 Stages (360 Tons PT Strands).
By Divisions: KPT



20. King Abdulaziz International Airport

Project Owner:	General Authority of Civil Aviation (GACA).
Location:	Jeddah, KSA.
End Date:	2019.
Scope of Work:	Waterproofing & thermal insulation, firestopping & traffic coating works. Repair work for concrete substrate, car park coating system, cement fireproofing, intumescent fireproofing, internal & external protective coating. Supply & installation of expansion joint, Crack injection works. Internal surface preparation for slabs & floors, concrete leveling works. Engineering, supplying, fabrication and erection of steel structures.
By Divisions:	SUW, CRES, Structural Systems, ACMS and FULAZ



21. New Head Quarter for Ministry of Transport

- Project Owner:** Ministry of Transport.
- Location:** Riyadh, KSA.
- End Date:** On Going.
- Scope of Work:** Testing, commissioning and handover for all Fit-out works and Interior finishes. Supply & installation of furniture for the whole tower (offices, meeting room, workstations area, social area, lounge, waiting area and reception). 3D Laser scanning and modeling of the existing condition for all the 28 floors with total built-up area of 25,000 sqm.
- By Divisions:** KAC, BMC, KEM, and DCU



22. Saudi Aramco's Offshore Maintain Potential Program

Project Owner:	Saudi Aramco.
Location:	Eastern Region, Saudi Arabia.
End Date:	On Going.
Scope of Work:	Non-destructive testing, heat treatment and inspection services.
By Divisions:	SOGEC



23. Precast Villas for The Ministry of Health (MOH)

Project Owner: Ministry of Health.

Location: Al Ahsa, KSA

End Date: 2022.

Scope of Work: The supply, delivery and erection (with cranes) of the precast element and prestressed hollow-core slab.

By Divisions: Inshaa



24. Holy Haram's 10 KM Underground Utility Culvert

Project Owner:	The General Presidency for the Affairs of the Two Holy Mosques (GPH).
Location:	Makkah, KSA.
End Date:	2009.
Scope of Work:	Structural condition assessment, development of as-built drawings, asset management, visual inspection, non-destructive testing, material sampling & testing, rectification works recommendation, supply & apply asset management system of the underground utility culvert.
By Divisions:	Inspectech



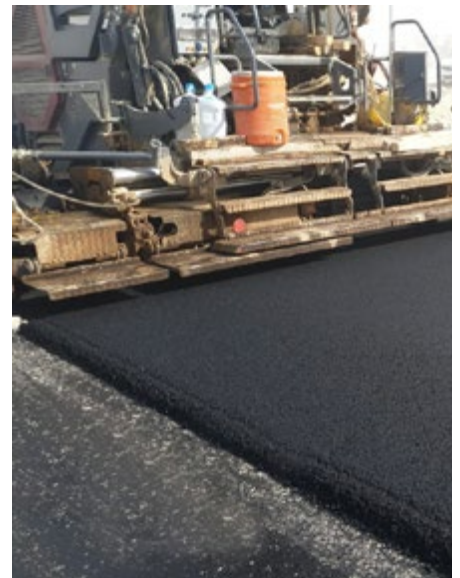
25. Avenues Riyadh

Project Owner:	Shomoul.
Location:	Riyadh, KSA.
End Date:	Ongoing.
Scope of Work:	Supply and supervision for 218,000 sqm of post-tensioning slabs.
By Divisions:	KPT



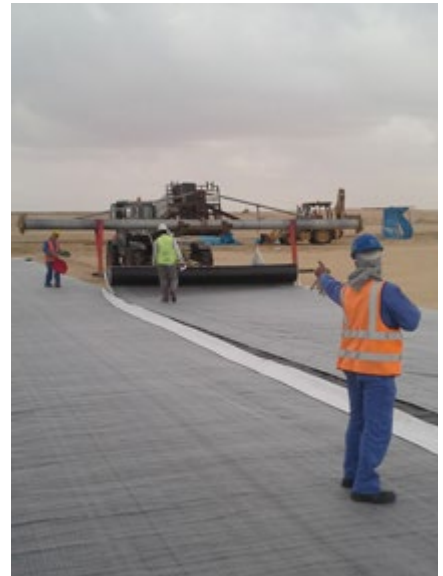
26. World Defense Show

Project Owner:	Saudi Arabian Military Industries.
Location:	Riyadh, KSA.
End Date:	2022.
Scope of Work:	Construction of runway, taxiways and aprons.
By Divisions:	SPD



27. Residue Storage Facility Cells 1 & 2

Project Owner:	Ma'aden Aluminum Company
Location:	Ras Al Khair, KSA.
End Date:	2021.
Scope of Work:	Supply and installation of HDPE Liner with Geo Clay Liner GCL.
By Divisions:	BMC



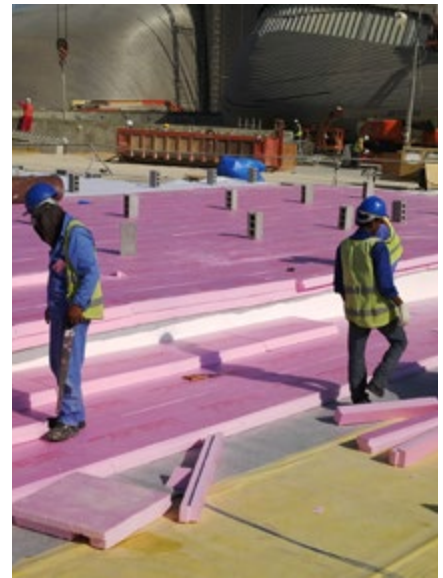
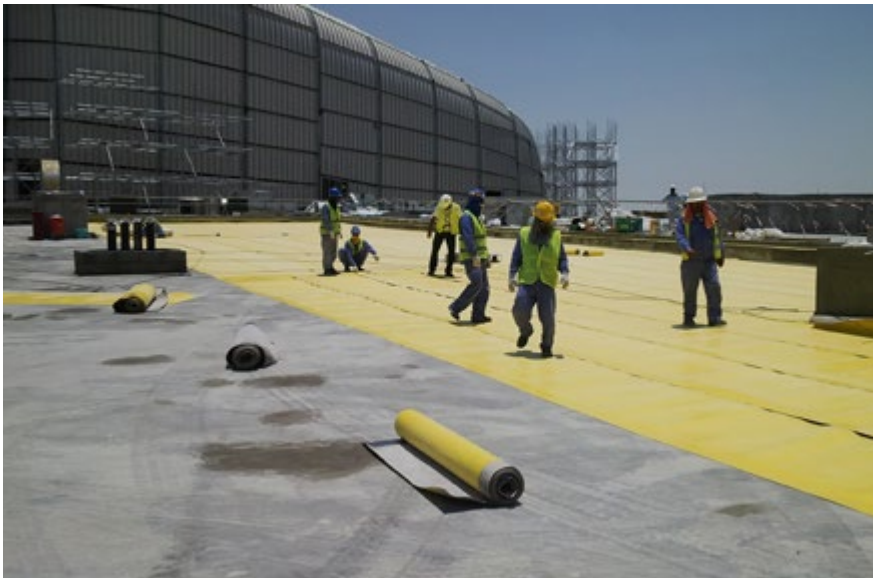
28. Qassim Storm Network

Project Owner:	Qassim Municipality.
Location:	Qassim, KSA.
End Date:	2021.
Scope of Work:	Construction of 15 km storm water networks pipeline in addition to 10 km culvert box.
By Divisions:	SPD



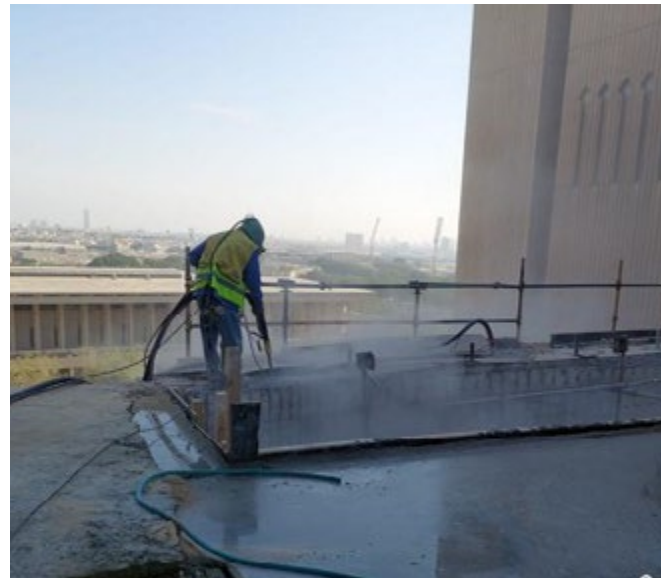
29. King Abdulaziz Center for World Culture

Project Owner:	ARAMCO.
Location:	Dhahran, KSA.
End Date:	2018.
Scope of Work:	Supply, install, and testing of a high efficiency and water tight roof garden system utilizing thermoplastic membrane for 35,000 sqm area. The roofing system was equipped with state of the art leak detection system to ensure ultimate water tightness.
By Divisions:	BMC



30. Concrete Structure Rehabilitation of KFUPM Services Tunnel

Project Owner:	King Fahad University of Petroleum and Minerals
Location:	Dhahran, KSA.
End Date:	2023.
Scope of Work:	Concrete repair, slab jacketing, wall reskinning, crack injection, installation of corrosion inhibitors inside the concrete structure of the services tunnel.
By Divisions:	Structural Systems and DCU



31. NEOM Temporary Sound Stages

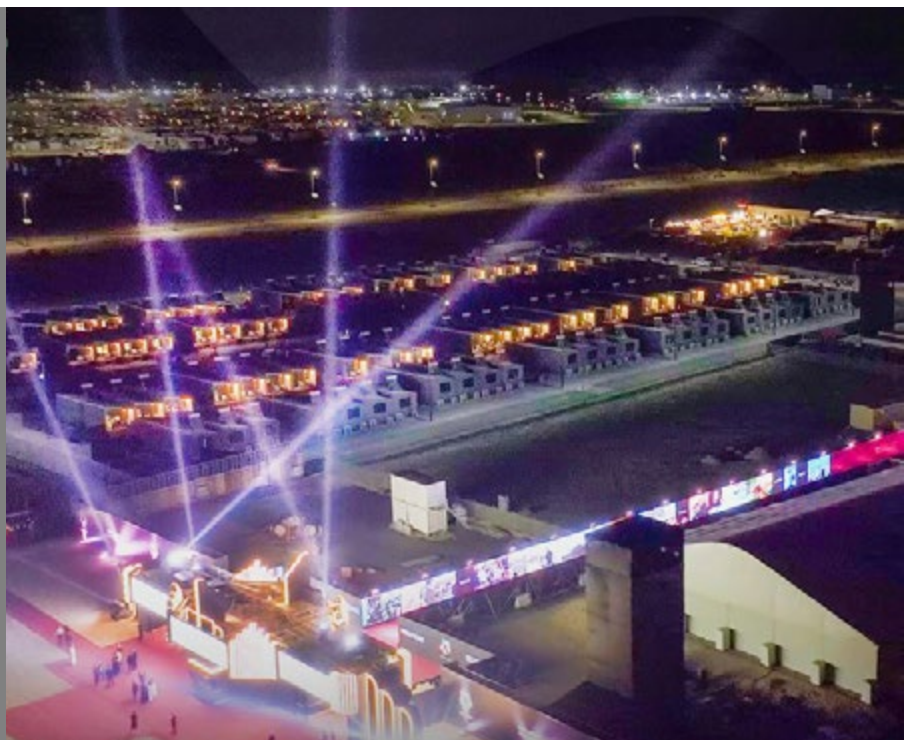
Project Owner:	MBC.
Location:	NEOM, KSA.
End Date:	2022.
Scope of Work:	The installation of steel fibre reinforced concrete flooring solution (SFRC) that uses fibres extensively tested and proven to provide outstanding performance, control of cracks, maximum flexural and shear strength.
By Divisions:	Twintec



mbc



نيوم NEOM



32. Qassim Sewage Network

Project Owner:	Ministry of Environment, Water & Agriculture.
Location:	Qassim, KSA.
End Date:	2021.
Scope of Work:	Construction of 150 KM pipeline sewage networks, connections & it's lift station.
By Divisions:	SPD



33. King Khaled Bridge

Project Owner:	Ministry of Transport.
Location:	Riyadh, Saudi Arabia.
End Date:	2015
Scope of Work:	Visual inspection, non-destructive testing, material sampling & testing, structural analysis, rectification works recommendation, structural strengthening design, and quality assurance bridge load testing.
By Divisions:	Inspectech



34. General Construction and Maintenance Agreements for SABIC

Project Owner:	Saudi Basic Industries Corporation (SABIC).
Location:	Central, Western, Eastern Regions, KSA.
End Date:	On Going.
Scope of Work:	Concrete repair, civil works, coating works & structural strengthening. Replacement of surge pond headliners for a cooling tower. Repair work, and construction of the storm water ditches. Rehabilitation services, construct the storm water drain, repair damage networks, road construction, aluminum cladding, tank sealant repair and waterproofing.
By Divisions:	ISD



35. Riyadh Medical Village

Project Owner: Tatweer for Real Estate.

Location: Riyadh, KSA.

End Date: 2018.

Scope of Work: Post-tensioning works for 33 Clinics (128,000 m²) and a Bridge Slab (27,000 m²).

By Divisions: KPT



36. Tamimi KAEC Warehouse

Project Owner:	Tamimi Markets.
Location:	KAEC (King Abdullah Economic City), Saudi Arabia.
End Date:	2022.
Scope of Work:	The application of Twintec's Freeplan flooring solution combined with Twintec PLUS to enhance appearance and reduce maintenance costs.
By Divisions:	Twintec



37. Research and Development Building of KFUPM

Project Owner:	King Fahad University of Petroleum and Minerals (KFUPM).
Location:	Dhahran, KSA.
End Date:	2022.
Scope of Work:	As-built package through 3D laser scanning, 3D Revit Modeling and 2D Documentation for the as existing condition of the building for all disciplines.
By Divisions:	DCU



38. Intersection Between King Abdullah with King Khalid Roads

Project Owner:	Arriyadh Development Authority (ADA).
Location:	Riyadh, KSA.
End Date:	2017.
Scope of Work:	Post-tensioning works for 2 main bridges, 2 flyovers and 1 girders bridge.
By Divisions:	KPT



39. Solar PV System for IKK Glass Factory

Project Owner: IKK Group.

Location: Jeddah, KSA.

End Date: 2021.

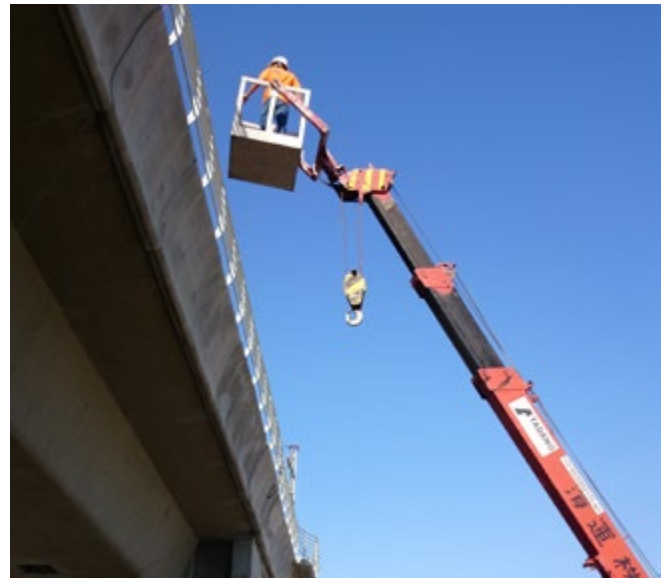
Scope of Work: Engineering, procurement, installation, testing and commissioning of 1750 kw On-grid solar PV system, flush mounted on a roof area of 11,000 sqm, including Installation of cable trays, power panels, earthing system, energy meters and monitoring system.

By Divisions: IK Energy



40. Al-Mashaer Metro's 18 KM Track & Facilities

Project Owner:	Ministry of Transport.
Location:	Jeddah, KSA.
End Date:	2022.
Scope of Work:	Structural condition assessment, structural load testing & rating, specifically visual inspection, bridge load test & vibration measurements, testing & rectification works of the metro track and facilities.
By Divisions:	Inspectech



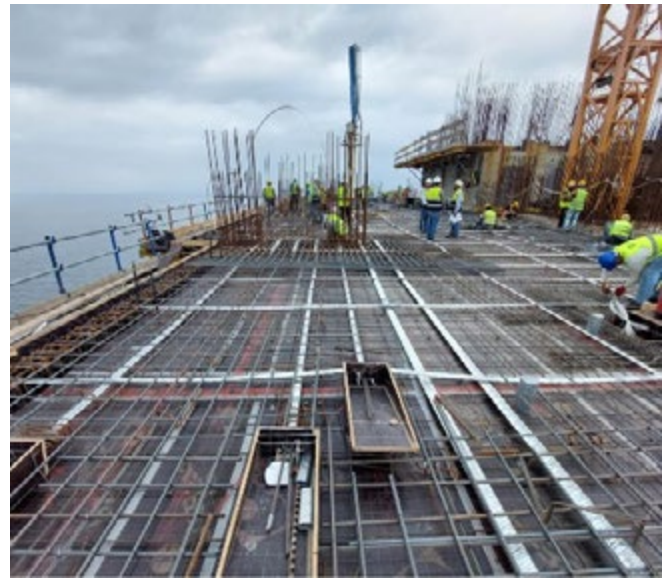
41. Diriyah - Super Basement

Project Owner: DGDA.
Location: Riyadh, KSA.
End Date: Ongoing.
Scope of Work: Supply and supervision for 120,000 sqm of post-tensioning slabs.
By Divisions: KPT



42. Somou Towers

Project Owner:	Somou.
Location:	Jeddah, KSA.
End Date:	Ongoing.
Scope of Work:	Supply and supervision for 70,000 sqm of post-tensioning slabs.
By Divisions:	KPT



KCG

PROJECTS HIGHLIGHTS **OUTSIDE KSA**

We are proud to be a recognized contactor on the most iconic projects taking place in KSA and the Middle East over the years.

Picture: Amaala | KSA





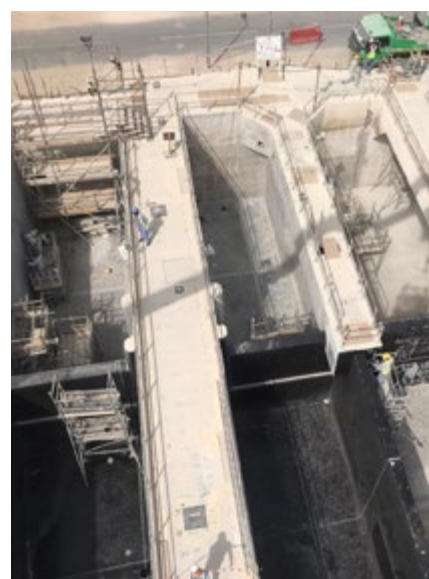
1. Abu Dhabi International Airport

Project Owner:	Abu Dhabi Airports Company.
Location:	Abu Dhabi, UAE.
End Date:	2018.
Scope of Work:	Waterproofing works & polyurethane car park floor coating works.
By Divisions:	KCG Emirates



2. Doha West Sewage Plant Refurbishment

Project Owner:	Public Works Authority of Qatar (Ashghal).
Location:	Doha, Qatar.
End Date:	On going.
Scope of Work:	Refurbishment of full elevated inlet structure. Refurbishment of two primary settlement tanks to be converted to gravity thickener, and other two tanks to be converted to sludge storage tanks. Refurbishment of eight aeration tanks, the final settlement tanks, the tertiary treatment and inlet pumping station and that of RAS/SAS pumping station.
By Divisions:	QCTC



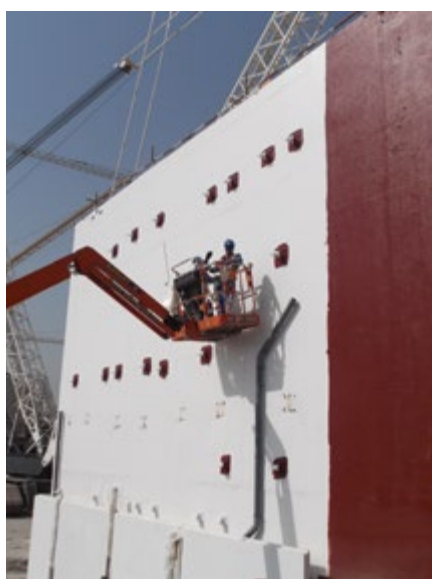
3. Ali Al Salem Air Force Base

Project Owner:	Leonardo Aircraft.
Location:	Kuwait.
End Date:	2020.
Scope of Work:	Excavation works, Backfilling works, Concrete paving for aprons and asphalt for taxiways.
By Divisions:	SPD



4. Louvre Abu Dhabi Museum

Project Owner:	Abu Dhabi Department of Culture & Tourism.
Location:	Abu Dhabi, UAE.
End Date:	2016.
Scope of Work:	Waterproofing for deep foundations submerged in the sea with full project waterproofing solutions from basement to the roof.
By Divisions:	KCG Emirates



5. Grand Egyptian Museum

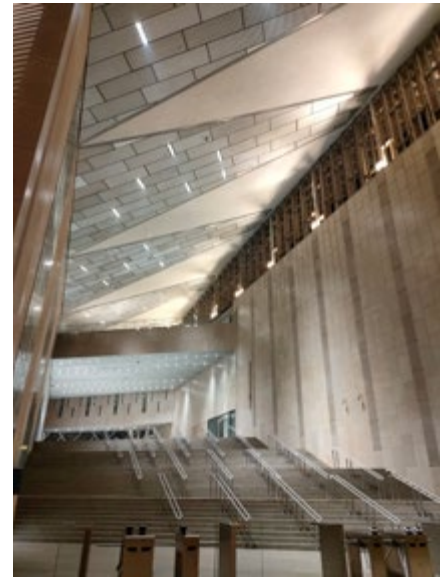
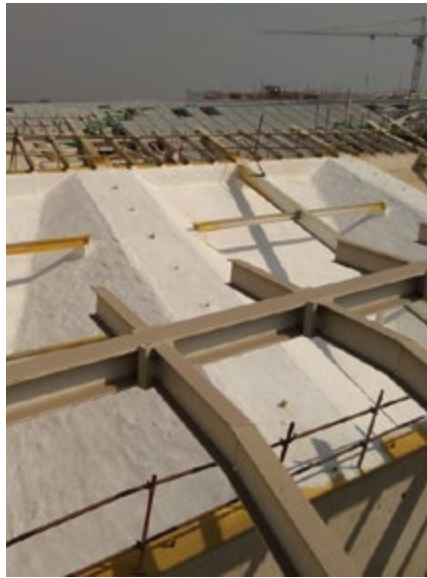
Project Owner: Ministry of Antiquities.

Location: Cairo, Egypt.

End Date: 2019.

Scope of Work: Supply & Application of Waterproofing System for Underground, Roof & Wet Areas.

By Divisions: A-Build Egypt



6. Al Jaidah Bridge

Project Owner:	Public Works Authority of Qatar (Ashghal).
Location:	Doha, Qatar.
End Date:	2022
Scope of Work:	Repair and maintenance of highway structures, excavation, back filling, compaction, surface preparation, drilling and insertion of shear connectors, Additional longitudinal steel, stirrups and pouring jacket concrete, protective painting, water based protective coating, removing and disposal of the existing raised kerbs of the flyover central reserve. Supply and installation of new expansion joints and road studs.
By Divisions:	QCTC



7. Mall of Oman

Project Owner: Majid Al Futtaim.

Location: Muscat, Oman.

End Date: 2021.

Scope of Work: Internal car park works for an area of 185,000 sqm, external car park works for an area of 60,000 sqm, and anti-carbonation painting works for an area of 230,000 sqm.

By Divisions: KCG Oman



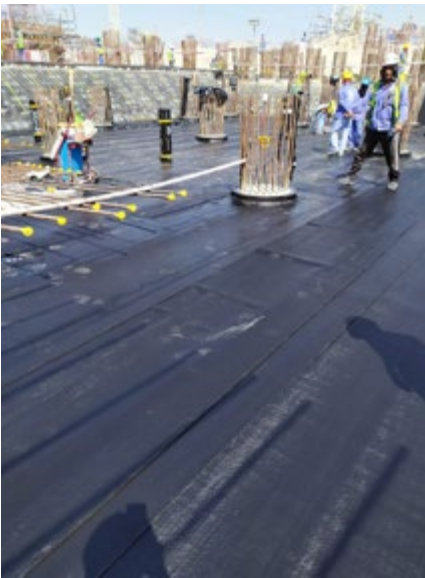
8. Zayed National Museum

Project Owner:	The Tourist Development and Investment Company of Abu Dhabi (TDIC).
Location:	Abu Dhabi, UAE.
End Date:	On Going.
Scope of Work:	Installation of substructure waterproofing comprising of PVC system with a total area of 5800 sqm and spray applied Polyurea Membrane system with a total area of 24,431 sqm.
By Divisions:	KCG Emirates



9. Sea World Abu Dhabi

- Project Owner:** Miral Asset Management .
- Location:** Abu Dhabi, UAE.
- End Date:** 2021.
- Scope of Work:** Installation of substructure waterproofing comprising of SBS system with a total area of 158,196 sqm, application of rubberized bituminous waterproofing emulsion on grade slab with a total area of 21,000 sqm. In addition to pile head treatment, treatment of construction joint in aquatic tanks with injection hose, swell able bars and re-injectable grout with a total of 34,126 lm.
- By Divisions:** KCG Emirates



10. Museum of The Future

Project Owner:	The Tourist Development and Investment Company of Abu Dhabi (TDIC).
Location:	Abu Dhabi, UAE.
End Date:	2021.
Scope of Work:	Installation of substructure waterproofing comprising of PVC system with a total area of 14,500 sqm. Installation of Polyurea membrane system with a total area of 18,025 sqm on podium, and of wet areas Polyurethane system with a total area of 1,370 sqm.
By Divisions:	KCG Emirates



11. Dubai Expo 2020 Metro Route

Project Owner:	Roads and Transport Authority (RTA).
Location:	Dubai, UAE.
End Date:	2020.
Scope of Work:	Anti-carbonation protective coating in piers, span, beams, inner sell box & parapet with a total area of 162,880 sqm. Epoxy liquid-applied waterproofing membrane at top of the span of a metro track covering a total area of 50,220 sqm.
By Divisions:	KCG Emirates



12. Infinity Bridge Dubai

Project Owner:	Roads and Transport Authority (RTA).
Location:	Dubai, UAE.
End Date:	On Going.
Scope of Work:	Application of Anti-carbonation protective coating in piers, span, beams, inner sell box, and parapet with a total area of 228,455 sqm.
By Divisions:	KCG Emirates



13. R5 Settlement

Project Owner:	Egypt Ministry of Housing (Utilities & Urban Development).
Location:	New Administration Capital, Egypt.
End Date:	Ongoing.
Scope of Work:	Supply and supervision of 2M sqm of post-tensioning slabs.
By Divisions:	SCC





Our Contacts


Regional Offices

KCG Emirates

 Saih Shuaib 3 ,4 R/A Dubai Industrial City, opposite DEWA substation.


 P.O.Box 282751 Dubai – UAE.


 + 971 4 818 1987


 +971 4 429 7031

KCG Egypt & A-Build Egypt


 20 Moustafa Refaat Street, Sheraton, Cairo, Egypt.


 P.O.Box 11799 Cairo-Egypt.


 +2 (02) 21262798


 +2 (02) 21262798

A-Build Lebanon

 Tallet Al Khayat, Najjar Street, Panorama Building, Ground Floor.

 P.O.Box 13-6031 Beirut-Lebanon.


 +961 1 704 907 / +961 1 704908 / +961 3 377344


 +961 1 704 909

KCG Oman

 Ali Al Mahrouqi Building Flat No 403, Building No.176, Plot No. 511, Block No. 250, Ghala Bowsher.

 P.O. Box 1759, PC # 133 Muscat, Oman.


 +968 2 411 7545 / 46


 +968 2 411 7547

KCG Bahrain

 Road 3649, Block 436, Flat No. 11, Building 2748, Alseef Dist, Bahrain Kingdom

 P.O Box 5106 – Alseef Dist, Bahrain Kingdom.

 +973 1 725 2163

 +973 1 725 2148

KCG Kuwait


 Kuwait, Sharq, Block No. 3, Ibn Mesbah Street, Ahmed Tower, Floor No, 4.


 P.O BOX : 13009.


 +965 22 020 218

 +965 22 020 219

QCTC Qatar

 Nasser Bin Khalid Building Block C, Office C1-204, Al Waab, Salwa Road.

 P.O. Box: 37671 Doha – Qatar.


 +974 4436 7181


 +974 4436 9965

KSA Offices

KCG Western Region


 P.O. Box 5338, Jeddah 21422 KSA.

 +966 12 627 8444

 +966 12 62 78333

KCG Central Region


 P.O. Box 58951, Riyadh 11515 KSA.


 +966 11 292 8444

 +966 11 292 8111


KCG Eastern Region


 P.O. Box 6897, Dammam 31452 KSA.


 +966 13 892 3444

 +966 13 859 0289

KCG Northern Region

 P.O. Box 15313, Tabuk 47911 KSA.

 +966 14 512 0222

 +966 14 512 0221

For inquires please contact us at

kcg.enq@ikkgroup.com

Kabbani Construction Group
www.kcg-ikk.com



KABBANI
CONSTRUCTION
GROUP®

