

**Welcome to
Our World.**

COMPANY PROFILE - VI



**KABBANI
CONSTRUCTION
GROUP®**

Integrated Engineering
& Contracting Solutions

Kabbani Construction Group



Table of Contents

06	IKK Company
08	KCG Company
10	Global Presence
12	Health, Safety & Environment “HSE”
14	KCG QHSEFM
16	KCG Figures & Revenues
20	KCG Business Divisions
74	KCG Regional Presence
82	Projects Highlights - KSA
118	Projects Highlights - Global
132	Contacts

NEOM is a bold and audacious dream of a new future, an accelerator of human progress that will embody the future of innovation in business, livability, and sustainability. KCG has been contributing to Neom projects including The Line, Trojena, Sindalah Island, Oxagon, and NIA.

Picture: Oxagon, KSA Neom | KSA

Isam Khairi Kabbani
Your Partner since 1968



Established in 1968, Isam Khairi Kabbani Group (IKK) is a leading Saudi family business and a pioneer in the construction industry. Our extensive portfolio encompasses every aspect of ambitious projects, including foundational infrastructure, building and construction materials, integrated contracting and engineering solutions, maintenance, building envelope and facade solutions, and refined interior solutions. Operating across multiple countries worldwide, we excel through mastering key business segments: Manufacturing, Trading, Contracting, Engineering, and Maintenance. This broad expertise enables us to address the diverse needs of the construction industry and beyond, including the food industry.

Blue is our identity, from where we began and continue... The endless blue hues of Jeddah's skies and shores, where our story began, and our founder's deeply rooted passion for the ocean and sailing have always inspired us to push beyond the boundaries of possibilities, playing an impactful role in the Saudi economy and the region. It shaped the group's vision and mission to continue to drive IKK Group forward on its journey of growth and excellence and to be the first choice of our stakeholders.

IKK Vision & Mission

Vision is maintaining our leading position in the construction industry and beyond by building the future of the communities we serve.

Mission is to provide innovative solutions tailored to meet construction market needs, serving the Kingdom of Saudi Arabia, the MENA Region, and key markets worldwide through our manufacturing, trading, and contracting capabilities.

IKK Values

The blue commitment

- Excellence** Standing as a benchmark for quality and distinction.
- Integrity** Accomplishing what we promised to achieve.
- Innovation** Embracing challenges as opportunities for business advancements.
- Impact** Striving to create a better present and future for all.
- Respect** Earning your trust with consideration, collaboration, and appreciation.

IKK Management



Mr. Isam Kabbani
IKK Group Honorary Chairman



Mr. Hassan AlKabbani
IKK Group Chairman

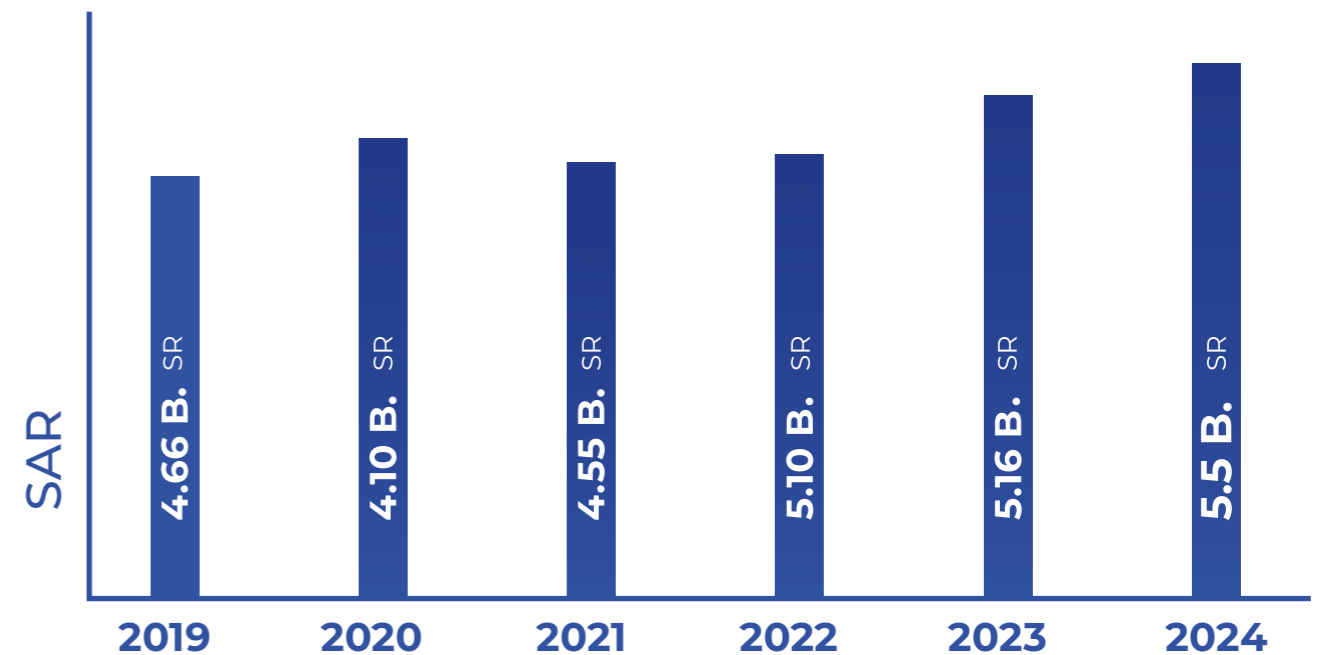


Mr. Amr AlKabbani
IKK Group CEO

IKK Facts & Figures



IKK Revenues



Kabbani Construction Group



KCG

IKK's contracting arm consists of 23 engineering & construction companies providing specialized engineering and construction services integrated to deliver advanced turnkey solutions for residential and commercial sectors throughout the region. We drive the development of specialized contracting and set benchmarks of high-quality standards. KCG leverages its experienced and highly qualified workforce over the years to deliver cutting-edge services.

1977

Since its inception in the 70s, KCG has grown to be a leading specialized contractor in the GCC & MENA regions. KCG is driven by innovation to provide integrated specialized construction services with advanced engineering solutions to provide full & tailored contracting services. We are offering Turnkey Services for commercial and residential sectors, Enabling & Road Works, Infrastructure Construction & Development, Tunneling (Pipe Jacking and Segmental), Oil and Gas Special Services, Urban Development, Airfield Construction Services, Fit-Out, Structure Protective Coating & Insulation Systems, Archaeological Investigation, Heritage Services (Consultancy, Conservation, and Restoration), Structural Condition Assessment, Structural Strengthening & Rehabilitation, Building Information Modeling (BIM) Services & Reality Capture, and Solar Energy Solutions.

Integrated Engineering & Contracting Solutions

KCG Sectors



Buildings



Industrial & Energy



Heritage & Culture



Infrastructure & Transportation

Our Vision

KCG's vision is to be the leading provider of comprehensive solutions, leveraging smart construction innovation to strengthen competitiveness in our core business areas while positively impacting society and the environment through advanced, sustainable solutions. We aim to craft the future of construction through exceptional quality and digitalization.

Our Mission

Our mission is to guarantee the most satisfying project execution by being the resolution developer. Driven by quality, trust, and accountability, we deliver customer-centric solutions with advanced problem-solving approaches that inspire and ensure excellence in every project.



KCG CEO

ENG. HATEM SALAHELDIN

KCG

BUSINESS PHILOSOPHY

As we continue to grow, we adapt to global construction trends while upholding our position as one of the leading contractors in MENA. Our projects meet the local construction requirements, ensuring seamless integration with the international market's advanced standards.

Sustainability drives our construction philosophy as we build efficient, durable structures while minimizing our carbon footprint for a greener future.

Our employees are our most valuable asset. We foster autonomy and growth through training, ensuring a skilled workforce is equipped to deliver innovative solutions.

We understand that each client has unique needs. Our solutions are customized to meet specific requirements, ensuring optimal results for every project. We empower our clients by providing knowledge and expertise to make informed decisions.

At KCG, we believe in building strong, lasting relationships with our stakeholders, including shareholders, employees, customers, and suppliers. Our commitment to integrity, transparency, & excellence ensures we meet and exceed our fundamental responsibilities.

KCG Global Presence



		Saudi Arabia		KABBANI CONSTRUCTION GROUP®
		Emirates		KABBANI CONSTRUCTION GROUP®
		Egypt		KABBANI CONSTRUCTION GROUP®
		Lebanon		
		Oman		KABBANI CONSTRUCTION GROUP®
		Bahrain		KABBANI CONSTRUCTION GROUP®
		Kuwait		KABBANI CONSTRUCTION GROUP®



KCG HSE

Health, Safety & Environment



Kabbani Construction Group's (KCG) ultimate goal is to prevent harm by ensuring safe working conditions and processes for all employees. KCG is committed to safeguarding the health and safety of its employees, contractors, visitors, and members of the public across all KCG premises, including job sites, in compliance with all applicable Governmental Health, Safety, Environmental, and Welfare legislation.

HSE is an integral part of KCG's Quality Management System (QHSEFM). Through this integrated approach, KCG ensures that health, safety, and environmental practices are embedded in every stage of its operations, from project initiation to completion, to create a culture of safety and sustainability.

KCG Safety Statements provide guidance, instructions, and assistance on specific matters relating to HSE. This information is disseminated through detailed procedures, safety committees, electronic messages, team briefings, toolbox talks, and notice boards. All stakeholders, contractors, and visitors are expected to follow the instructions and guidelines provided.



KCG complies with local government legislation, associated regulations, approved codes of practice, and guidance notes in giving the aforementioned undertaking. The ultimate responsibility for ensuring compliance with any legal requirements for workplace health and safety rests with the KCG Chief Executive Officer, who is supported by the KCG Safety Department, which is accountable for meeting compliance at all levels and the continued development of the KCG Safety Program. All parties are responsible for ensuring the health, safety, and well-being of all stakeholders. No corporate goal shall take precedence over health and safety, and no activity is so imperative that it cannot be completed safely.



KCG QHSEFM

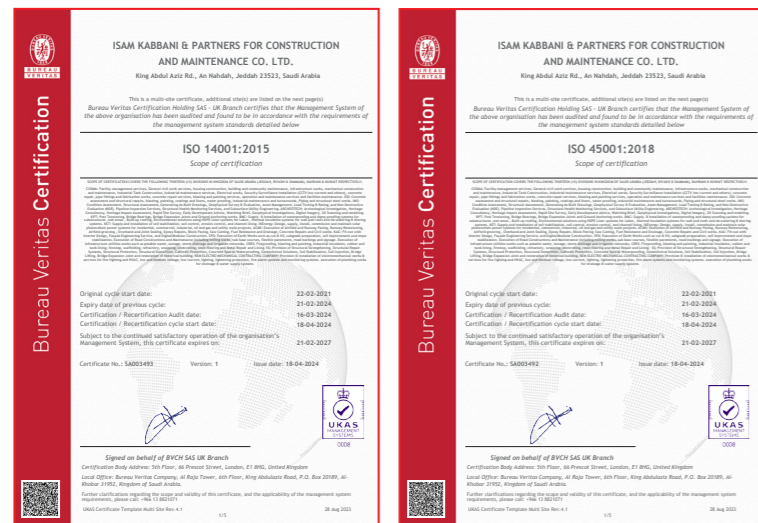
Total Quality Management System (TQM)



KCG has been implementing its TQM approach since 2007. TQM is an integrative philosophy of management aimed at continuously improving the quality of products and processes.

At KCG, quality is not merely a goal; it is the cornerstone of our operations. We are committed to delivering projects that exceed expectations and set new benchmarks in the construction industry. Our integrated Total Quality Management (TQM) system, encompassing ISO 9001:2015, ISO 14001:2015, and ISO 45001:2018, ensures that quality is embedded in every aspect of our work, from initial planning and design to final handover.

TQM empowers our teams to embrace ownership of quality at every level. It fosters a culture of continuous improvement by actively seeking feedback, identifying opportunities for enhancement, and deploying innovative solutions to optimize processes and deliver outstanding results.



KCG QHSEFM

Quality Assurance & Control (QA/QC)

Our QA/QC department plays an essential role in maintaining excellence across all projects. This is achieved through a rigorous program that includes:

- **Stringent Inspection Procedures:** Thorough inspections and tests conducted at every project stage.
- **Experienced Personnel:** A team of skilled and experienced QA/QC professionals.
- **Advanced Technology:** Use of cutting-edge tools and technologies to ensure precision in quality control.
- **Continuous Improvement:** Regular reviews and audits to enhance processes and identify areas for improvement.

This commitment to quality has resulted in numerous successful projects and earned KCG a strong reputation for delivering projects that meet the highest standards.



KCG SAUDI ARABIA DIVISIONS

Construction Services & Maintenance	Waterproofing & Thermal Insulation	Airports, Roads & Infrastructure	Concrete Precast Fabrication & Erection	Digital Engineering & Digital Construction Applications	Electromechanical Contracting Company	Renewable Energy Systems	Fit-Out & Interior Contracting	Exhibitions & Museums Solutions	Specialized Architectural Finishes	Protective coating solutions, Insulation, Scaffolding & Rock Theming	Jointless Flooring Contracting
Airfield Construction & Maintenance	Post-Tensioning Systems	Condition Assessment & Infrastructure Management Solutions	Concrete Repair & Soil Improvement	Archaeological Field Management Solutions	Marine Works & Infrastructure	Cathodic Protection, & Heat Treatment	Industrial Construction, Repair & Maintenance	Micro-tunneling & Tunneling Technologies	Soil Stabilizing Techniques	Waterproofing, Damp proofing & Firestopping	

KCG FACTS & FIGURES

11,000+ Employees Globally

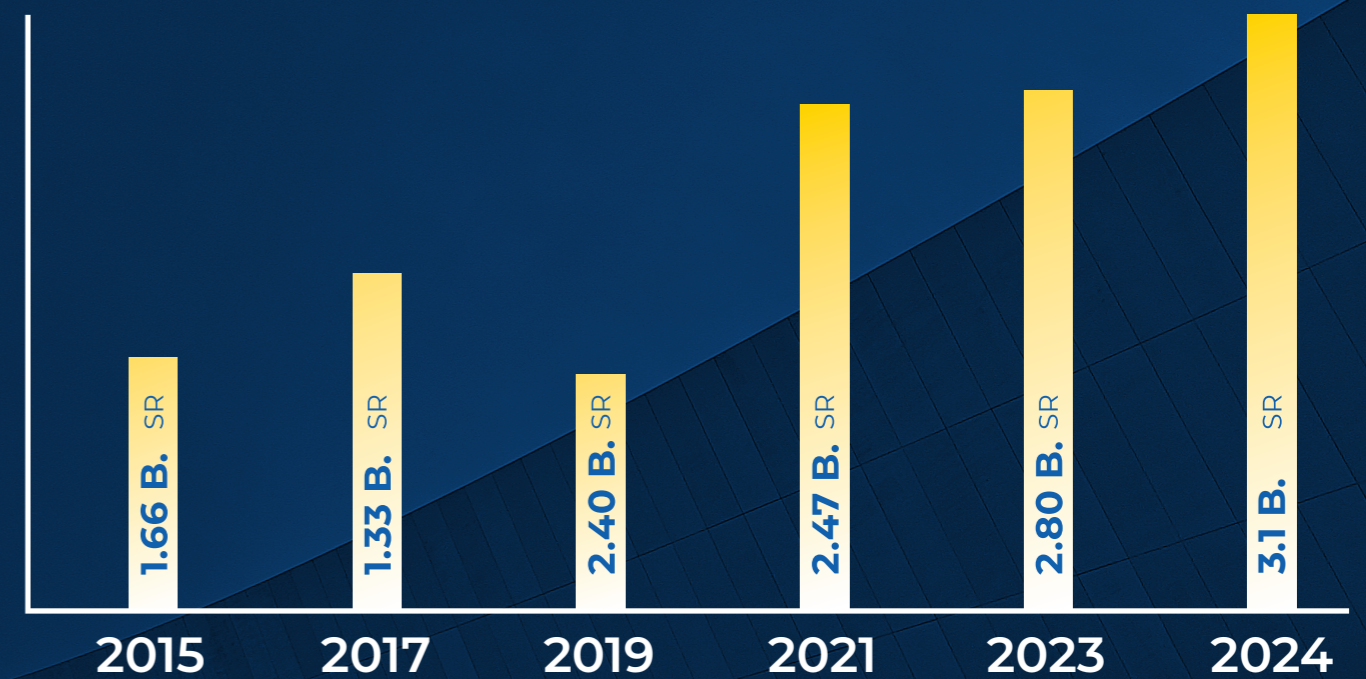
450 + Running / Active Projects (Engineering - Specialized - EPC & Turnkey) 6.9 + B. SR Projects Value

45+ Years of Experience

5000+ Equipment, 1900+ Vehicles. KCG owns vehicles and equipment worth 700 M SAR.

Kabbani Construction Group (KCG) is the contracting vehicle of the IKK Group, one of the largest and oldest business institutions in Saudi Arabia.

KCG REVENUES



KCG

BUSINESS DIVISIONS

As part of its never-ending efforts to provide the finest services possible, KCG has 23 construction and engineering companies offering a wide range of EPC solutions & specialized construction activities in integration with digital applications, maximizing value engineering. KCG has contributed to the construction of mega projects including Shura Golf Villas, Coastal Village Beach Club, & Ummahat Al Shaykh Islands Hotel.

Picture: The Red Sea Global | KSA



COSMA

Construction Services & Maintenance



COSMA (Construction & Maintenance Services) was originally established in 1987 to serve Saudi Aramco's specialized construction services and preventive maintenance needs for the community and industrial sectors. COSMA's services have expanded to many major prestigious clients for plants and refineries, including SASREF, SAMREF, LUBEREF, SEC, the Royal Commission of Jubail & Yanbu, and many more.

- 1- General Civil Work
- 2- Housing Construction
- 3- Building & Community Maintenance
- 4- Infrastructure Works
- 5- Mechanical Construction & Maintenance
- 6- Industrial Tank Construction

OUR SERVICES



BMC S&D Unit

Enabling, Piling, Shoring & Dewatering Services



Shoring & Dewatering Unit

SD, a KCG company, is a leading provider of specialized construction services. With a strong foundation built on years of experience, SD offers comprehensive solutions for enabling works, including piling, shoring, and dewatering. Our commitment to advanced engineering and cutting-edge equipment ensures optimal project execution and client satisfaction.

1- Enabling Works

- Cut & Fill
- Subgrade Preparation
- Soil Improvement
- Slope Stabilization & Protection
- Milling and Resurfacing Works

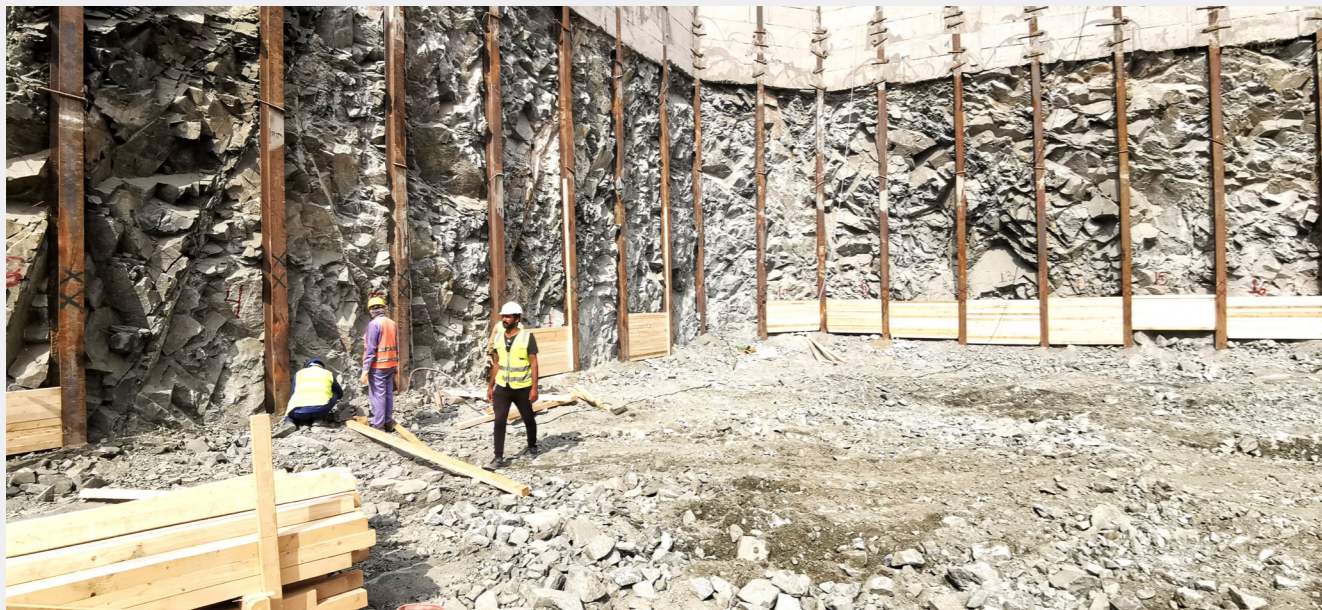
2- Shoring:

- Berlin Shoring Walls
- Diaphragm Walls
- Contiguous Piles of Walls
- Sheet Pile Walls
- Bracings
- Secant Pile Walls
- Ground and Rock Anchors
- Soil Nailing

3- Piling

4- Dewatering:

- Deep Well System
- Well Point System



BMC

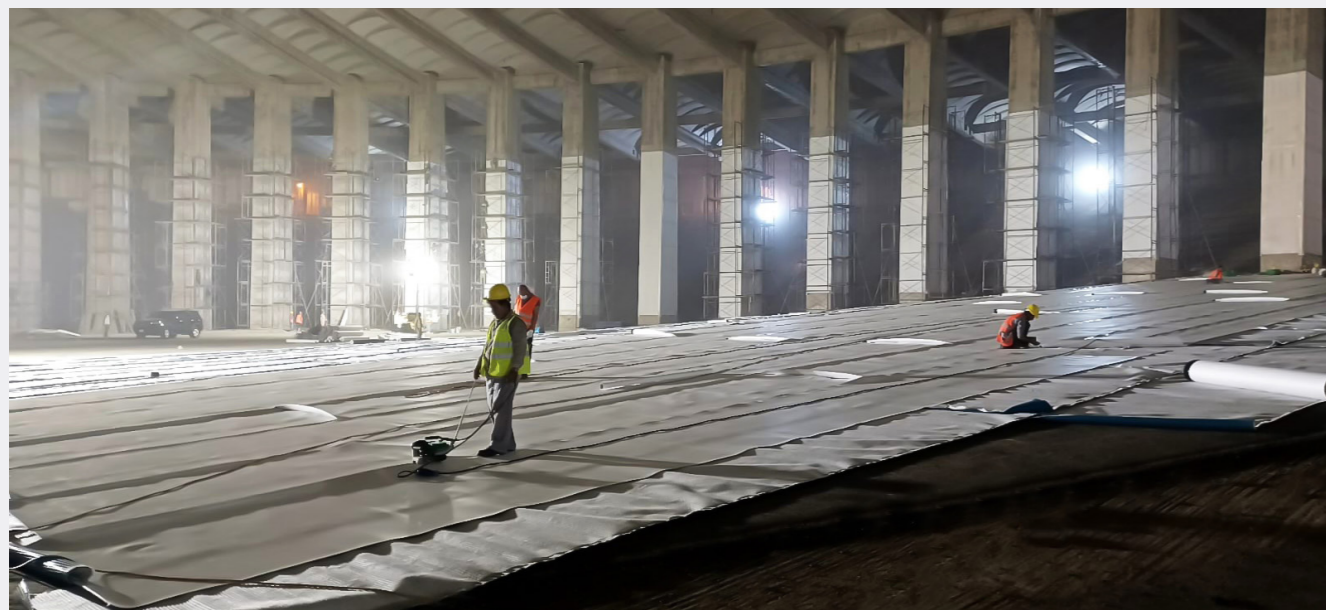
Waterproofing & Thermal Insulation



KCG's first company is BMC (Waterproofing, Roofing, Thermal Insulation, Lining, EIFS Facades, and Shoring & De-Watering). BMC has completed nearly 100 million square meters of complete waterproofing and damp proofing systems, larger than the entire city of Dhahran, since its inception in 1980 and over the last four decades. BMC has since created a specialized market for single-ply membrane systems to address the growing demand for superior waterproofing protection in modern buildings.

BMC is the world's largest non-franchise single-ply membrane roofing contractor and distributor. BMC is constantly looking for innovative solutions and high-quality products by collaborating with reputable material producers in the waterproofing and building chemicals fields, gaining their trust, and becoming their recommended applicator for their product line. BMC is continuously developing new services and business lines to its range of services, enhancing its market leadership position.

- 1- Substructures Waterproofing
- 2- Roofing & thermal insulation systems
- 3- Waterproofing for Wet Areas
- 4- Lining Systems for Water Containment Structures
- 5- Environmental Solutions (HDPE Geo-Synthetic Liner Systems)



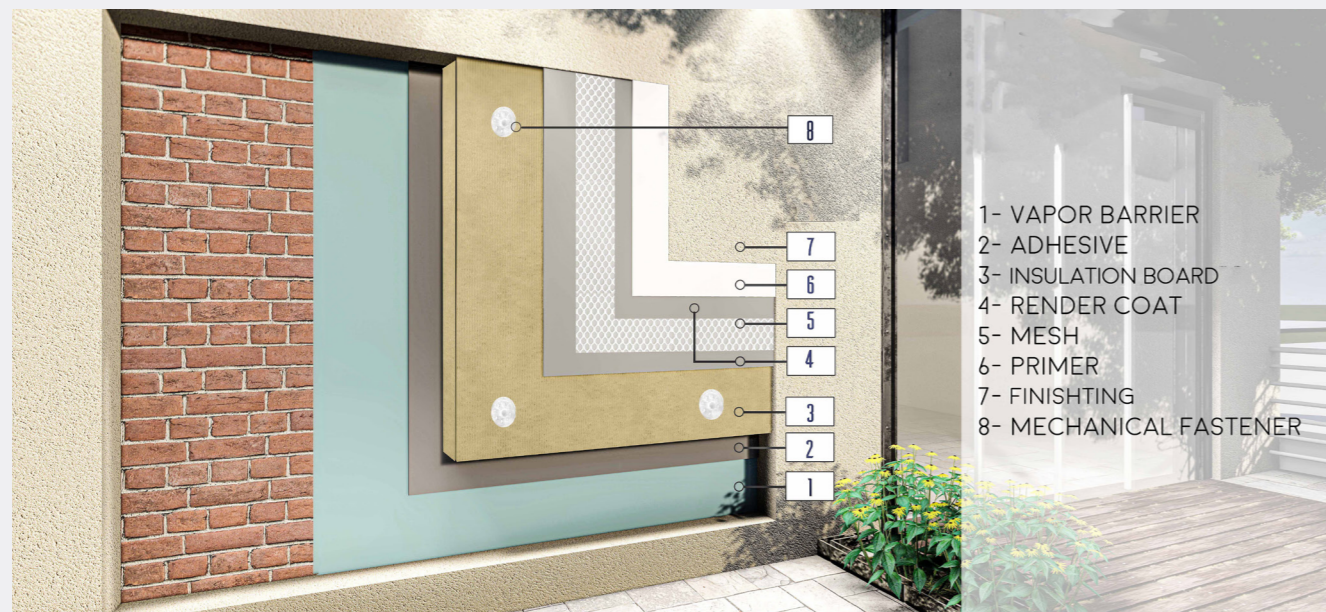
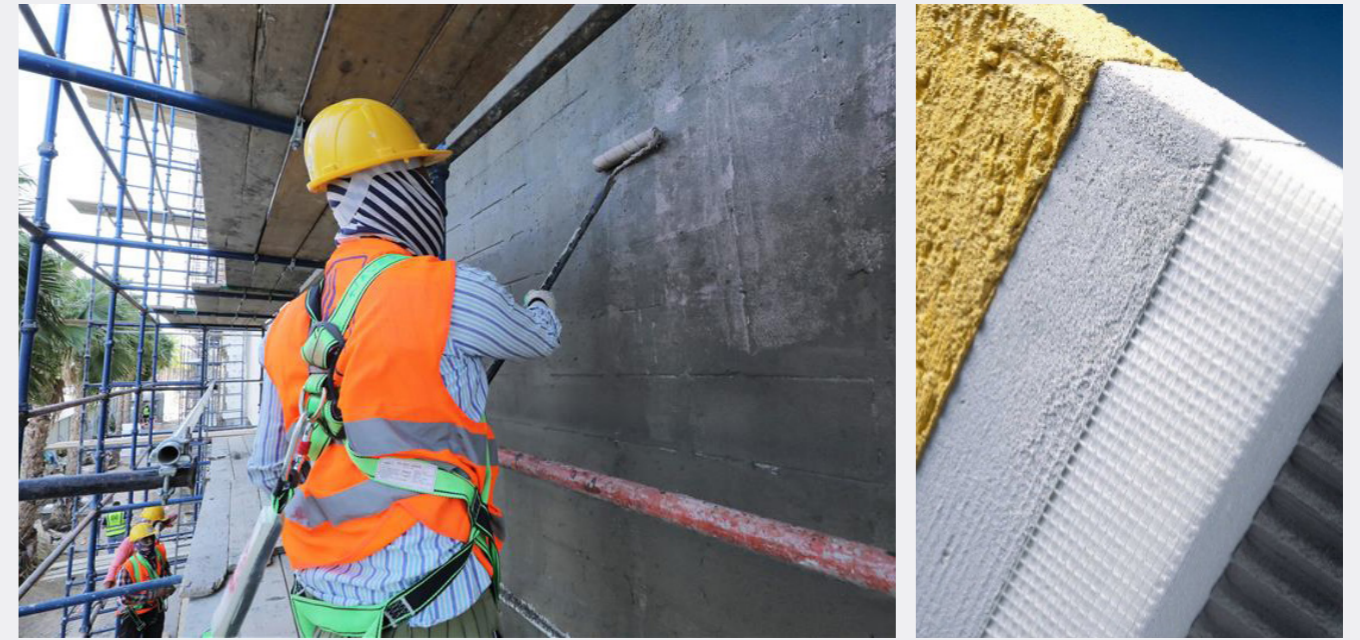
BMC EIFS Unit

Exterior Insulation and Finishing Systems



BMC's new unit, EIFS, is dedicated to the supply and installation of Exterior Insulation and Finishing Systems (EIFS). EIFS is a multi-layer finishing system comprised of thermal insulation boards and renders that provide continuous insulation by design, giving architects design flexibility and aesthetics while helping to meet new energy codes.

- 1- Exterior Insulation and Finishing Systems EIFS
- 2- Light Weight Façade System
- 3- Exterior Decorative Façade Elements
- 4- External Decorative Renders
- 5- Soffit Insulation Systems
- 6- Acoustic Ceiling Renders



SPD

Airports, Roads & Infrastructure

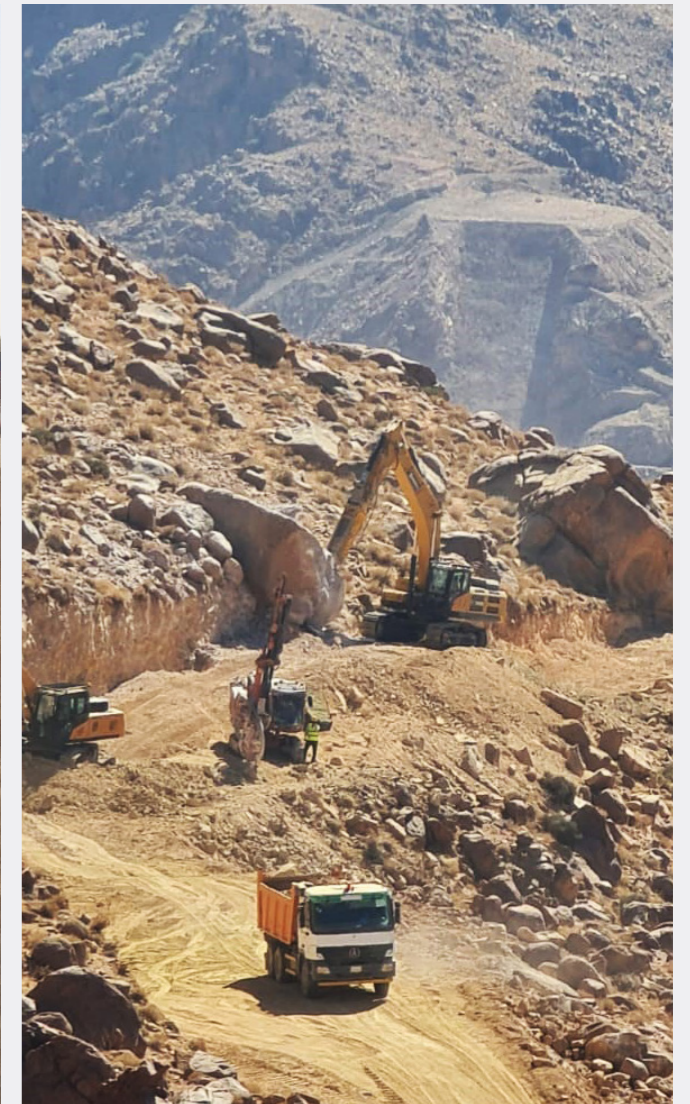


SPD (Special Projects Division) is in charge of various infrastructure projects. It works on airport runways, road construction, utilities, telecommunications, landscape, and hardscape projects for the public and private sectors.

SPD is committed to quality and customer service. It completes each project on schedule and within budget while maintaining the highest levels of professionalism, excellent quality, and utmost concern for the safety of its personnel and the environment.

- 1- Airports & Roads
- 2- Earthworks
- 3- Underground Utilities
- 4- Telecommunication

OUR SERVICES



INSHAA

Concrete Precast Fabrication & Erection



INSHAA (Inshaa company for concrete products and general contracting) has extensive experience in the design, fabrication, and construction of precast concrete elements such as composite and solid wall panels, wall cladding, columns, beams, stairs, miscellaneous items, and hollow core slabs with thicknesses ranging from 50 mm to 500 mm.

All external precast parts would have a gray or colored finish with a treated surface. We offer value engineering solutions to save costs and convert traditional construction to precast structures. One of the key criteria in design/production to achieve higher quality, time savings, and durability for project delivery is the development of precast concrete structures to be completed on modular buildings.

INSHAA provides Design, Manufacturing, and Installation for its products, which are:

- 1- Hollow Core
- 2- Precast Cladding
- 3- Precast Columns
- 4- Grey Finish Wall Bearing Panels
- 5- Precast Beams
- 6- Sand Blast Wall Bearing Insulated Panels
- 7- Precast Boundary Wall
- 8- Hollow core Boundary walls
- 9- Precast Stairs



Digital Construction Unit

Digital Engineering & Digital Construction Applications



The Digital Construction Unit (DCU) is a new subsidiary of KCG, established to reinforce the company's leadership in the Saudi market, where major construction projects increasingly depend on the most advanced technical construction applications. Leveraging the extensive industry experience of its leadership and team, coupled with advanced construction technology processes, DCU is committed to delivering high-quality services that meet the rapidly evolving demands and standards of the industry.

DCU aims to be recognized as an industry leader for its expertise in engineered building processes and its innovative approach to cutting-edge technology and delivery systems.

1- Digital Design, Virtual Design & Construction:

Engineering Services, BIM Services, Virtual Reality & Augmented Reality (VR & AR), 4D Planning 5D Cost Estimation, Asset Information Modeling, Facility Management Integration

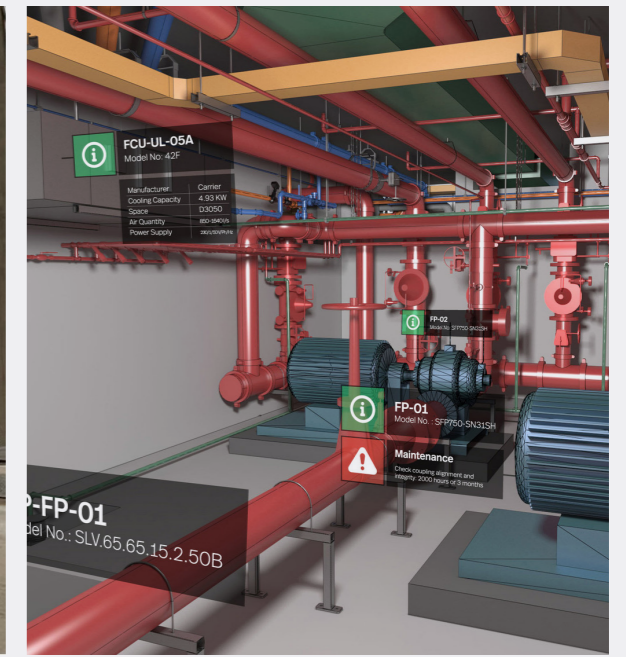
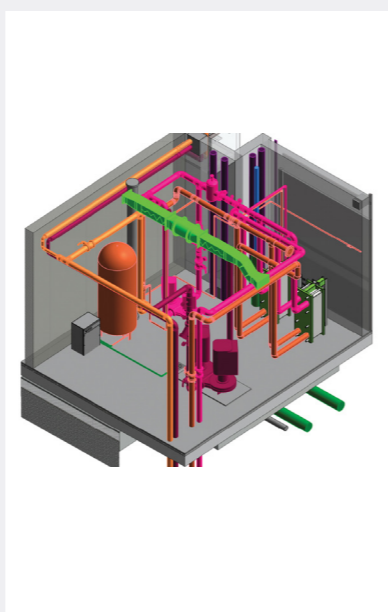
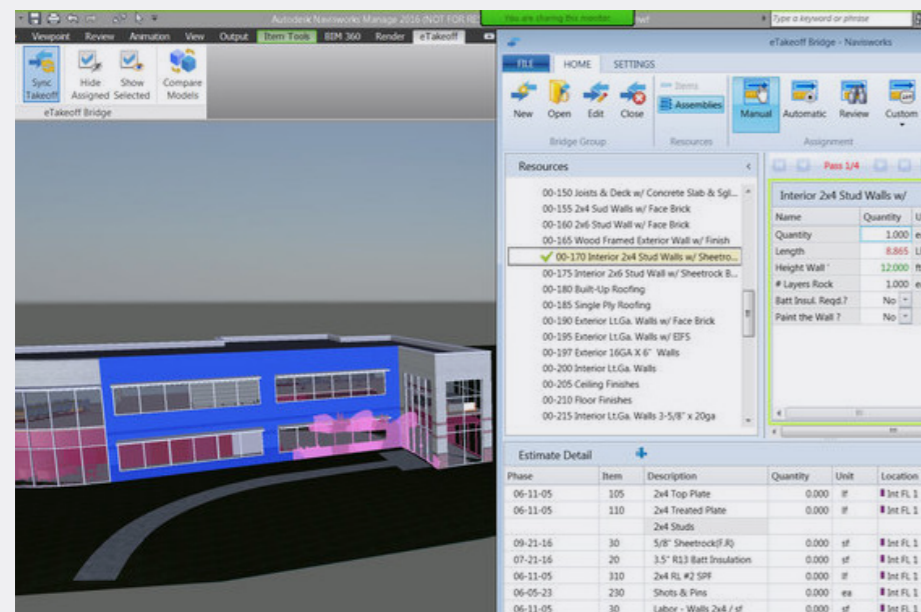
2- Reality Capture & Surveying:

3D Laser Scanning, Mobile Mapping, 3D Aerial Survey

3- Digital Construction Applications:

Digital Fabrication, Modular Buildings, 3D Concrete Printing (3DCP), Other Digital Construction Applications

OUR SERVICES



EMCC

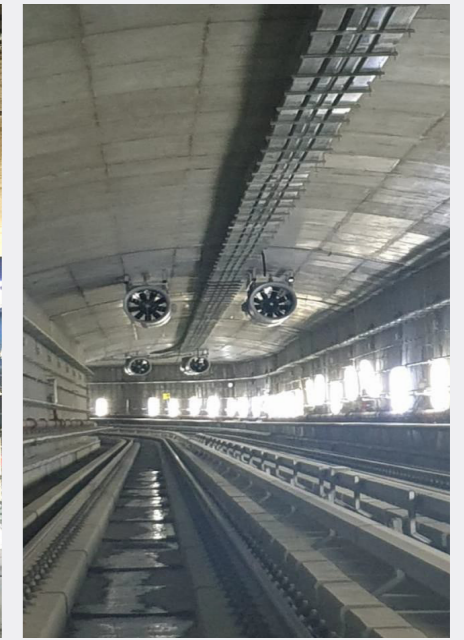
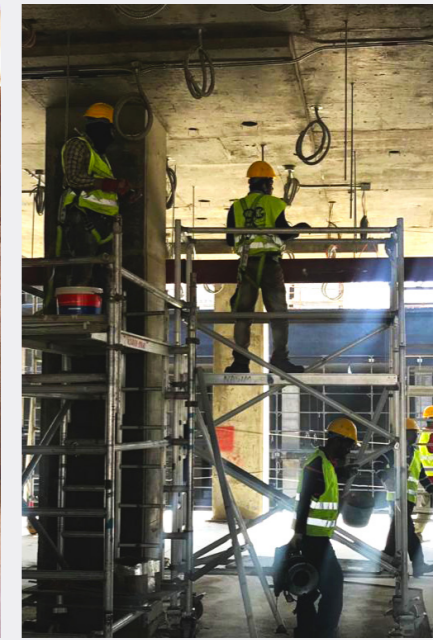
Electromechanical Contracting Company



EMCC (Electromechanical Contracting), a pioneering force in the Engineering, Procurement & Construction sector (EPC), takes pride in its broad range of Mechanical, Electrical, and Plumbing operations (MEP) for medium and large residential, commercial, industrial, medical, and government buildings.

Through dedicated devotion to its clients and various important services supplied without compromise by hundreds of skilled technicians while overseen and monitored by a synergetic team of highly experienced managers, EMCC maintains a respectable position as a leading contributor to the MEP industry.

- 1- Infrastructure
- 2- Firefighting Systems
- 3- Low-Current Systems
- 4- Low & Medium Voltage Networks and Substations
- 5- Alternative Power Supply
- 6- HVAC Systems
- 7- Air & Gas Networks
- 8- Pumping Stations
- 9- Plumbing/Piping Systems
- 10- Laboratories, Fume Hoods
- 11- Tunnel Ventilation System (TVS)



IKK Energy

Renewable Energy Systems



IKK Energy is a division of Kabbani Construction Group (KCG), established in 2018. IKK Energy offers engineering, procurement, and construction services (EPC) to design, supply, install, commission, and maintain complete EV Chargers, Solar PV Systems, and Smart Parking Solutions. IKK Energy addresses residential, commercial, industrial, oil and gas, and utility-scale projects in order to diversify the sources of energy according to Saudi Vision 2030.

IKK Energy provides turnkey services with full in-house capabilities for different systems and delivers optimum solutions with the highest quality warranty and after-sales support.

1- EV Chargers

- AC Chargers
- DC Chargers

2- Solar PV Solutions

- On-Grid Systems
- Off-Grid Systems
- Hybrid Systems
- Utility Projects
- Pumping Systems
- Solar Street Lights
- Battery Energy Storage System
- Solar EV Chargers

3- Smart Parking Solution

- Smart Parking Barrier



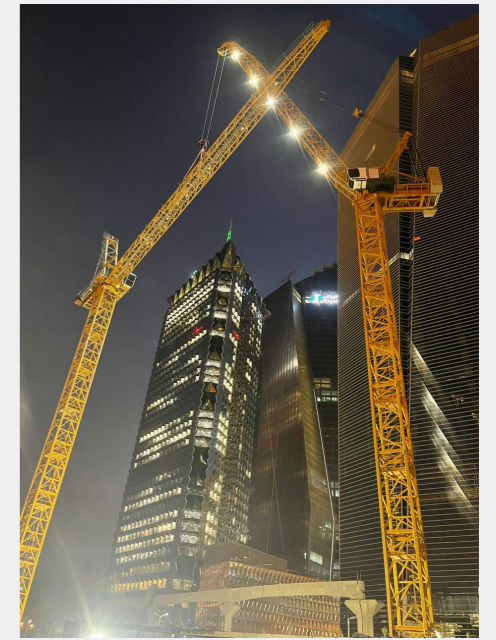
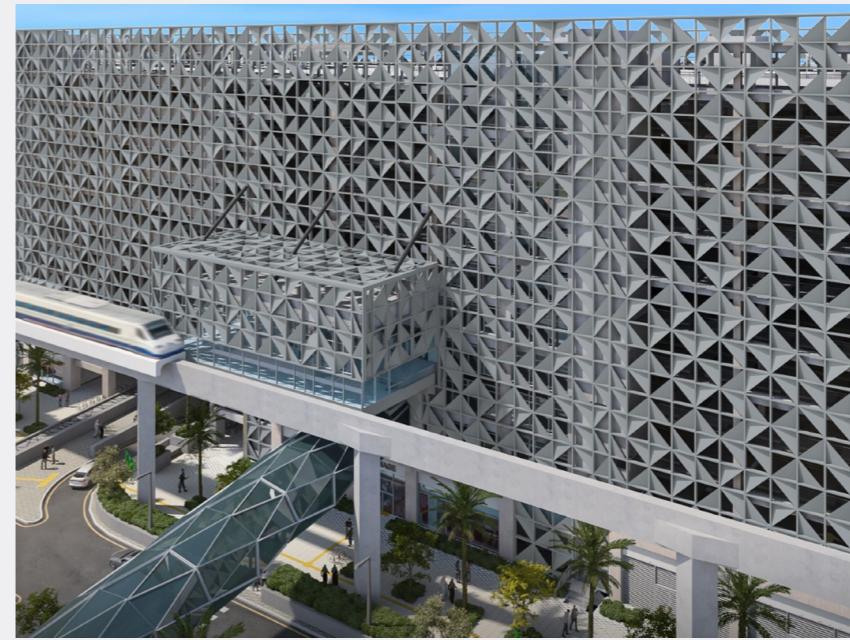
KAC

Fit-Out & Interior Contracting



KAC (Kabbani Architectural Concepts) specializes in Design and Build Construction for residential and commercial buildings, as well as towers and industrial plants. KAC manages the complete construction project from start to finish using project management procedures and sustainable solutions. KAC is dedicated to being the “Builder of Choice” by providing outstanding service. Our focus is on simplicity, innovation, excellence, proactivity, and partnership to provide value-added services to our clients.

- 1- Fit-Out & Interior Contracting Activities
- 2- Furniture Selection and Procurement
- 3- Design & Build Contract Solutions



EMCCS

Kabban Exhibitions and Museums Solutions



EMCCS merges artistic vision with engineering precision to deliver unparalleled museum and exhibition solutions. We specialize in the meticulous design and execution of projects that seamlessly blend historical preservation with cutting-edge innovation. Our engineered portfolio includes the refurbishment and finishing of galleries at the Museum of Islamic Art, where we implemented museum-approved fit-outs that honor cultural heritage while integrating modern aesthetics. Additionally, we have installed advanced display showcases, art collection storage systems, and laboratory equipment at the Qatar Olympic and Sports Museum and the National Museum of Qatar, ensuring the highest standards of preservation and functionality. Our expertise also extends to the fit-out of the “Christian Dior: Designer of Dreams” exhibition, where we created an immersive environment that reflects the brand’s legacy and forward-thinking vision. Through these projects, EMCCS demonstrates a commitment to sustainable construction practices and innovative design solutions, preserving the past while embracing the future to enrich the narrative and visual impact of exhibitions.

- 1- Museum-Approved Architectural Finishes
- 2- Exhibition Space Design & Fit Out
- 3- Scenography
- 4- Art Conservation Lab Solutions
- 5- Custom Mounts & Object Installation
- 6- Art Lighting Design & Display
- 7- Audiovisual, Media & Graphic Productions
- 8- Art Collection Storage System



D9S

Specialized Architectural Finishes



Division 9 Solutions (D9S) is a standalone entity within Kabbani Construction Group, focusing on highly decorative and specialized architectural finishes. D9S has emerged within KCG to service the market in KSA, GCC countries, and the rest of the Middle East. The company has delivered hundreds of prestigious projects, from museums, hospitals, and railway stations to palaces, airports, and boutique retail shops.

The company's name is inspired by its focus on bespoke solutions for floors, walls, and ceiling finishes, typically categorized under Division 9 in construction specifications. D9S, a TERRAZZO market leader for the past decade, is proud to be one of the few NTMA (National Terrazzo & Mosaic Association) international members outside the United States and has won the NTMA International Honor Award for Best International Project in 2023/2024. The mission is to excel in every aspect of its specialties, delivering high-end, flawless service and ensuring peace of mind for clients and end-users.

1- Decorative Interior Floors:

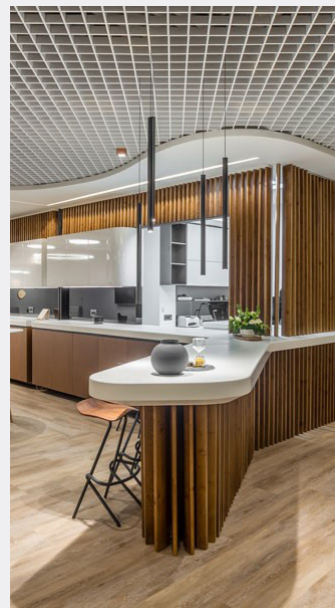
Cast-in-situ Terrazzo, MicroCement Finishes, Comfort Floors, Wood Plastic Composite (WPC), Luxury Vinyl Tile (LVT), Decorative Resinous Quartz Floors, Other Miscellaneous

2- Suspended Metal Ceiling:

Cell Metal Ceiling, Baffle Metal Ceiling, Metal Mesh Ceiling, Metal Stave Ceiling, Floating Islands, Healthcare Hygienic Metal Ceiling, Standard Metal Tiles Ceiling, Special Shapes Metal Ceiling

3- Outdoor Hardscape Floors:

Cast-in-situ outdoor Terrazzo, Stamped Concrete, Resin Bond Stone Carpet, Exposed Aggregates Pigmented Concrete, Wood & Bamboo Decking, Engineered Stone



CRES

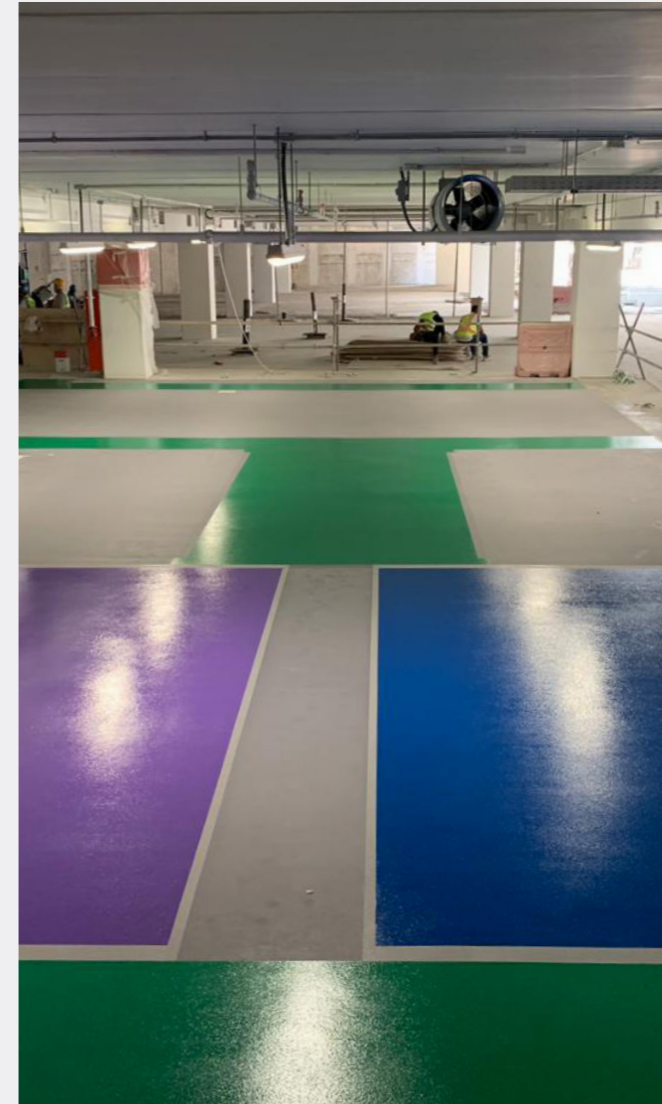
Protective Coating Solutions, Insulation & Scaffolding



CRES is a leading provider of specialized coating services for mega projects, with over 35 years of industry experience. With a skilled workforce certified by ARAMCO, they deliver exceptional services in oil & gas fields, chemical plants, industrial factories, and commercial projects. With over 1,000,000 sqm of work completed, CRES is an approved applicator for most international fireproofing material suppliers. They adapt to market demands by partnering with pioneering manufacturers and using the latest industry tools and techniques. Their commitment to excellence is reflected in their high-end professional services, supported by certified manpower and extensive engineering experience, ensuring safety and quality in all projects.

- 1- Blasting & Painting (Onshore-Offshore)
- 2- Fireproofing
- 3- Industrial Insulation
- 4- Scaffolding
- 5- Pipe Rubber & Tank Lining
- 6- Shotcreting & Rock Bolts
- 7- Firestop
- 8- Resin Flooring
- 9- Wrapping
- 10- Rock Theming

OUR SERVICES



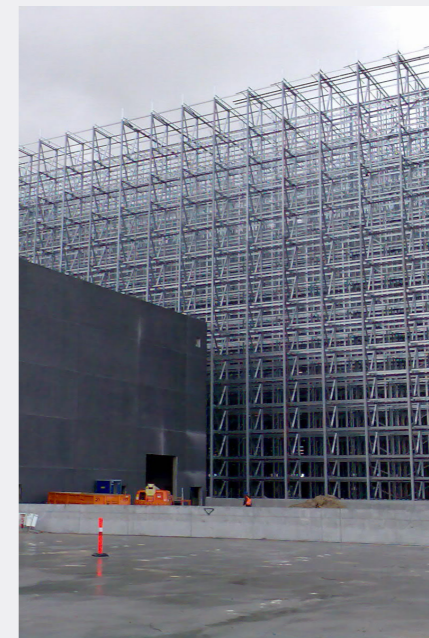
TWINTEC

Jointless Flooring Contracting



Twintec Saudi, a specialized steel fiber reinforced concrete 'Jointless' flooring contractor, provides a personal product with a high level of performance, environmental sustainability, and aesthetics worldwide through a unique total offer concept of Design-Build-Guarantee delivering superior slabs using Steel Fibre Reinforced Concrete (SFRC) jointless flooring solutions with excellence in design, high quality, and life cost value.

- 1- Freeplan® - 'Jointless' SFRC Ground Bearing Floor Slab.
- 2- Freeplan® XT - 'Jointless' SFRC External Yard
- 3- Twinplan® - 'Jointless' Defined Movement SFRC Floor Slab
- 4- Twintec® ULTIMATE - Seamless Floor Slab
- 5- Twintec® STRUCTURAL - SFRC Structural Raft Foundations
- 6- Twintec® PLUS - Surface Enhancer
- 7- ECO Freeplan® - Flooring with Reduced Environmental Impact
- 8- TSR - Twintec Services and Renovation



ACMS

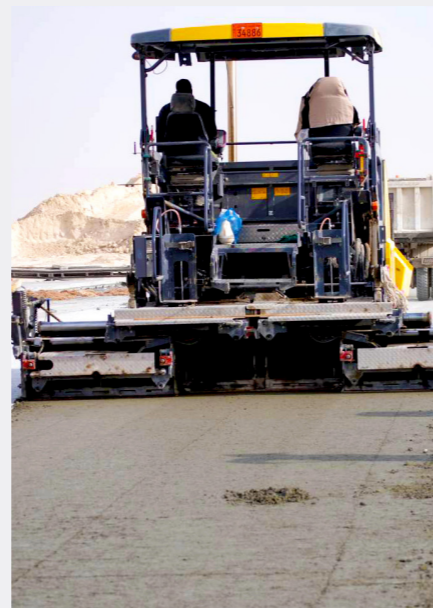
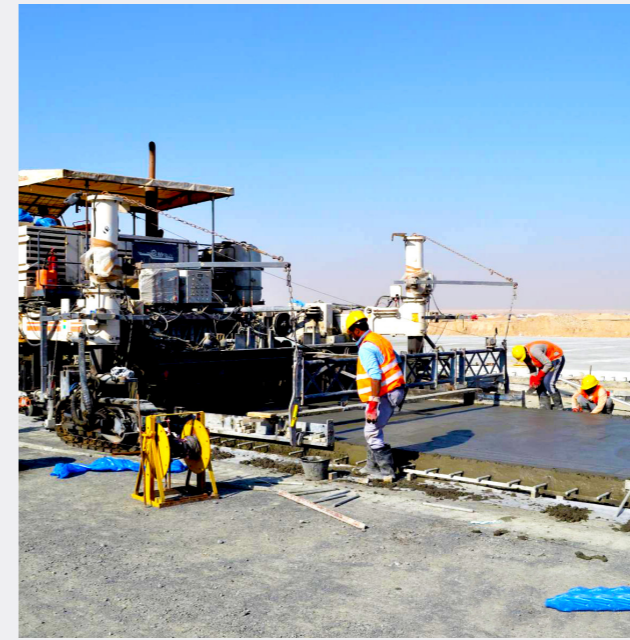
Airfield Construction & Maintenance



ACMS (Airfield Construction & Maintenance Services) is a Saudi enterprise that combines KCG's knowledge and resources. ACMS has a regional and international reputation for constructing and maintaining commercial and military airfields.

ACMS has extensive airside expertise in all aspects of airfield pavement development and maintenance facets. ACMS has designated airfield maintenance personnel to do routine maintenance to ensure that the airfield always remains operational.

- 1- Airfield Construction
- 2- Airfield Maintenance
- 3- Airfield Treatment
- 4- Airfield Repairs
- 5- Concrete Paving
- 6- Qualitative Analysis



KPT

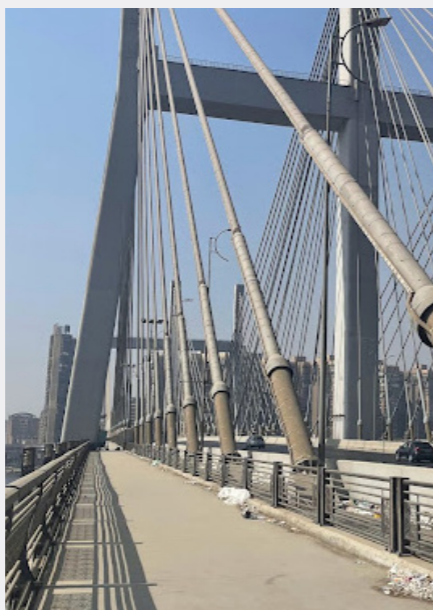
Post-Tensioning Systems



Kabbani Post-Tensioning (KPT), a highly specialized division within KCG, offers cutting-edge solutions in post-tensioning, expansion joints, bridge bearings, and more to the Saudi market. By integrating expertise from renowned international companies such as OVM International Ltd. and VERDUS.L. International, KPT delivers comprehensive and advanced engineering solutions for building and bridge projects.

Our collaboration with these international experts ensures that we utilize the latest technologies and best practices, resulting in engineering solutions that are both cost-effective and time-efficient. This integration allows KPT to enhance structural integrity, optimize construction processes, and significantly reduce project timelines and costs. By leveraging global innovations and local expertise, KPT drives the development of Saudi Arabia's infrastructure, offering reliable, high-quality solutions that meet the highest standards of safety and performance.

- 1- Post Tensioning Systems
- 2- Bridge Construction Equipment
- 3- Bridge Bearings
- 4- Expansion Joints
- 5- Anchor Block System
- 6- Stay Cable System
- 7- External Cable System
- 8- LDM Ground Anchor Cable



Inspectech

Condition Assessment & Infrastructure Management Solutions



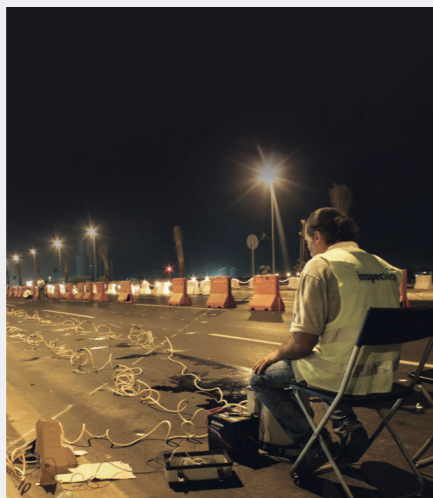
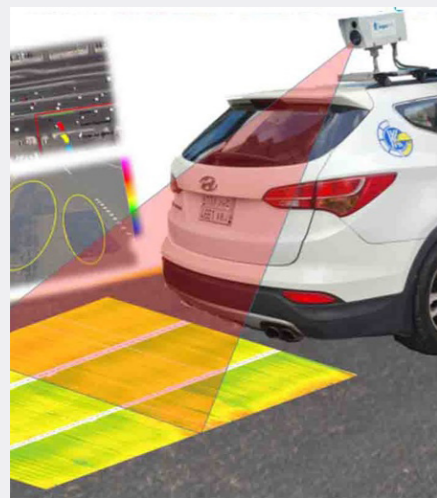
Inspectech (Infrastructure Management Solutions) has merged structural inspection with cutting-edge technology to become the Middle East's first engineering firm offering Advanced *Civonic Solutions (Civonics is the combination of civil engineering and electronics – i.e., utilization of the latest electronic and information technology in civil applications). This dynamic section of KCG has focused all of its intellectual and technological resources on understanding the present state of infrastructure. Similarly, it has collaborated closely with leading international firms to develop practical engineering solutions that sustain and extend the lifecycle of structures at the lowest possible cost. Inspectech examines a structure closely to address its durability and serviceability while staying within the project budget.

1- Structural Engineering & Evaluation

- Structural Condition Assessment
- Special Inspections
- Structural Analysis
- Development of As-Built Drawings
- Asset Management
- Structural Load Testing & Rating

2- Testing & Instrumentation

- Non-Destructive Testing
- Geophysical Imaging & Survey
- Subsurface Utilities Engineering
- Structural Health Monitoring
- Infrared Thermal Imaging
- Pipeline Services



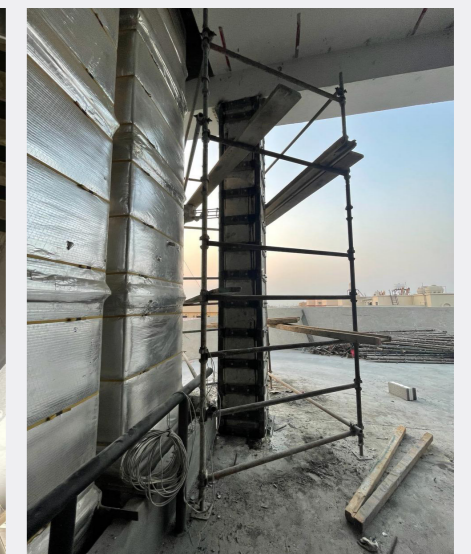
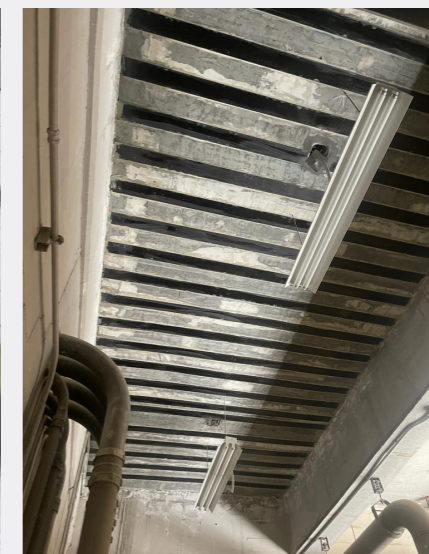
Structural Systems

Concrete Repair & Soil Improvement



Structural Systems (SS) was established as a distinct entity under the KCG family to address the increasing demand and provide ample space for the expansion of KCG's specialized activities. This decision followed significant success and growth in our concrete repair, structural strengthening, and condition assessment endeavors. Identifying the root cause of concrete issues is crucial for devising effective repair techniques. Unlike straightforward codes with detailed design techniques, repair systems defy easy categorization, making a nuanced understanding essential. This comprehension allows our solutions to address both the cause and the resulting impact. The quality, perceived integrity, and potential durability of a structure are largely determined by its construction.

- 1- Structural Repair
- 2- Structural Strengthening (Concrete, Steel Jacketing & CFRP System)
- 3- Structural Demolition
- 4- Cathodic Protection
- 5- Strengthening with Post-Tensioning Solutions
- 6- Leakage Treatment
- 7- Geotechnical Solutions (Soil Stabilization, Soil Injection, Micropile)
- 8- Concrete Protective Coating
- 9- Capillary Waterproofing
- 10- Bridges Expansion Joints Replacement
- 11- Bridge Lifting and Bearing Replacement



Archeotech

Archaeological Field Management Solutions



Archeotech (Archeology Field Management Solutions) intends to bring together experts in Archeological Investigation, Heritage Consultancy, Geophysical Investigation, Geomatics, Photogrammetry, and Digital Imagery to help with the research and protection of archaeological and cultural values.

Archeotech is also uniquely positioned to leverage its sister firm Inspectech's extensive knowledge in existing structure condition assessment and subsurface imaging and evaluation. Inspectech's international partner, "Geostudi Astier, Italy," has extensive experience in geophysical applications in archaeology.

1- Heritage Consultancy:

- Early Development Advice
- Rapid Site Assessment
- Heritage Impact Assessment

2- Archeological Site Investigation:

- Evaluation
- Archeological Excavation
- Archeological Watching Brief

3- Supporting Services :

- Condition Assessment
- HIA for Existing Structures



Structural Systems HRC Unit

Heritage Restoration & Conservation



HRC, a dedicated business unit under Structural Systems, specializes in Heritage Restoration & Conservation and Mud Village Conservation. We are committed to preserving Saudi Arabia's cultural heritage and art through meticulous restoration practices and innovative conservation techniques, ensuring historical sites and structures are maintained for future generations. Our expertise combines traditional craftsmanship with modern technology, delivering exceptional results in heritage preservation and cultural care.

- 1- Conservation And Restoration Of Mud, Stone And Concrete Buildings.
- 2- Immediate Intervention.
- 3- Soil Stabilization And Foundation Reinforcement.
- 4- Documenting, Dismantling And Re-Assembling Of Heritage And Historical Elements.
- 5- Restoration Of Stone, Marble, Plaster, Wooden, And Metal Elements In Heritage And Historical Buildings.
- 6- Structural Strengthening Works For Walls, Ceilings, Arches, Domes, And Other Structural Elements
- 7- Fine Restoration Works.



SMC

Marine Works & Infrastructure



KCG and Maridive Offshore Projects (MOP) have partnered to provide offshore projects on a turnkey basis. KCG has a diversified portfolio of engineering and contracting solutions in the construction industry, while MOP is a market leader in OffShore projects. MOP aims to supplement the Group's fleet with integrated engineering, survey, and diving personnel who can operate and maintain offshore infrastructure. The management of MOP decided to build this team of divers by only recruiting engineers to problem-solve and save significantly on delivering projects. This problem-solving culture has become the core of the company to build the aimed reputation as one of the field's leaders in the Middle East.

We believe that the combined capabilities and experiences of both companies in engineering, equipment, and project management got together to tackle the most challenging infrastructural projects and qualify KCG for complex Offshore and Onshore Construction projects with full & integrated contracting solutions.

- OUR SERVICES
- 1- Vessels Chartering
 - 2- Towage
 - 3- Salvage
 - 4- Oil spill containment and environment control
 - 5- Hydrographic/ geophysical survey
 - 6- Offshore inspection
 - 7- Underwater structure repair
 - 8- Pipeline installation
 - 9- Water intake installation and maintenance
 - 10- Offshore construction



SOGEC

Cathodic Protection & Heat Treatment

SOGEC (Specialized Oil & Gas Engineering Company) is a 100% Saudi national company launched in 2001 to meet the acute needs of the oil and gas industry.

Throughout the years, SOGEC has gained substantial professional expertise in the sectors of cathodic protection, non-destructive testing, and heat treatment for pipelines, plant piping, well casings, tanks, vessels, jetties, steel-reinforced concrete, and much more.

- 1- Cathodic Protection
- 2- Internal Corrosion Services
- 3- Pipeline Direct Assessment
- 4- Vapor Corrosion Inhibitor (VCI)
- 5- Non-Destructive Testing (NDT)
- 6- Heat Treatment
- 7- Inspection Service



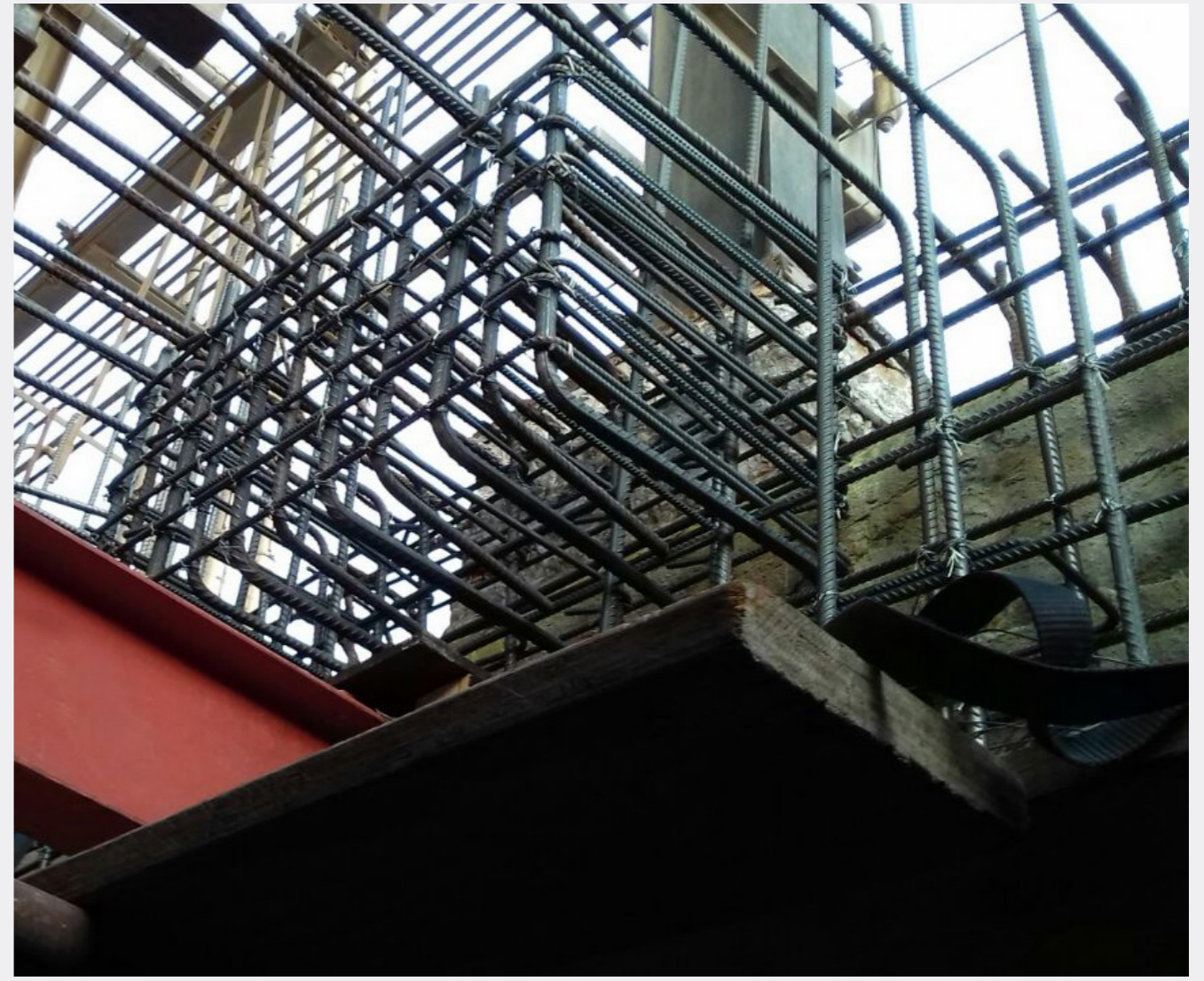
ISD

Industrial Construction, Repair & Maintenance



ISD (Industrial Services Division) is a specialized contractor supporting Saudi Arabia's industrial belts. ISD has successfully performed numerous repairs and maintenance projects around the nation, mostly for subsidiaries of Sabic, SWCC, Marafiq, SEC, Sadara, Farabi, Tasnee, and other important industrial clients. ISD's distinctive approach, led by highly skilled engineers and personnel, entails a thorough understanding of the facilities and the development of a comprehensive remedial plan. This approach extends the service life of the industrial structure and ensures minimal disruption of facility operations, with a strong emphasis on safety.

- 1- Conditional & Risk Assessments
- 2- Blast Resistance & Mitigation
- 3- Structural Concrete Repair
- 4- Steel Structure Upgrades
- 5- Composite Strengthening
- 6- Industrial Maintenance
- 7- Linings & Coatings
- 8- Marine & Underwater Repairs
- 9- Waterproofing
- 10- Corrosion & Protection Control
- 11- Mechanical Piping & Fabrication
- 12- Electrical Instrumentation
- 13- Re-Tubing of Heat Exchanger
- 14- Hydro-Jetting / Pressure Cleaning
- 15- Bundle Pulling Services



Specialized Tunneling LTD.

Micro-tunneling & Tunneling Technologies
Kabbani Concord Partnership



STL, in partnership with KCG and CONCORD, provides advanced pipe jacking solutions to meet the infrastructure demands of Saudi Arabia. KCG specializes in infrastructure and underground utility construction, while CONCORD specializes in tunneling. This integration allows for comprehensive and fully integrated contracting solutions for challenging infrastructure projects. STL's tunneling services utilize the latest technologies and skilled staff experience to ensure precision and efficiency. They have a proven track record in executing complex tunneling projects, particularly in congested urban areas and significant national sites like the Suez Canal.

STL's pipe jacking method, combined with microtunneling machines, is crucial for installing sewerage, water supply, and cable infrastructure beneath roads, railways, and water channels. This method minimizes disruption to existing infrastructure and ensures safety protocols and real-time monitoring. STL also offers advanced segment lining systems for transportation networks and utilities, surpassing traditional pipe jacking methods for tunnels exceeding 3500mm in diameter or involving curves.

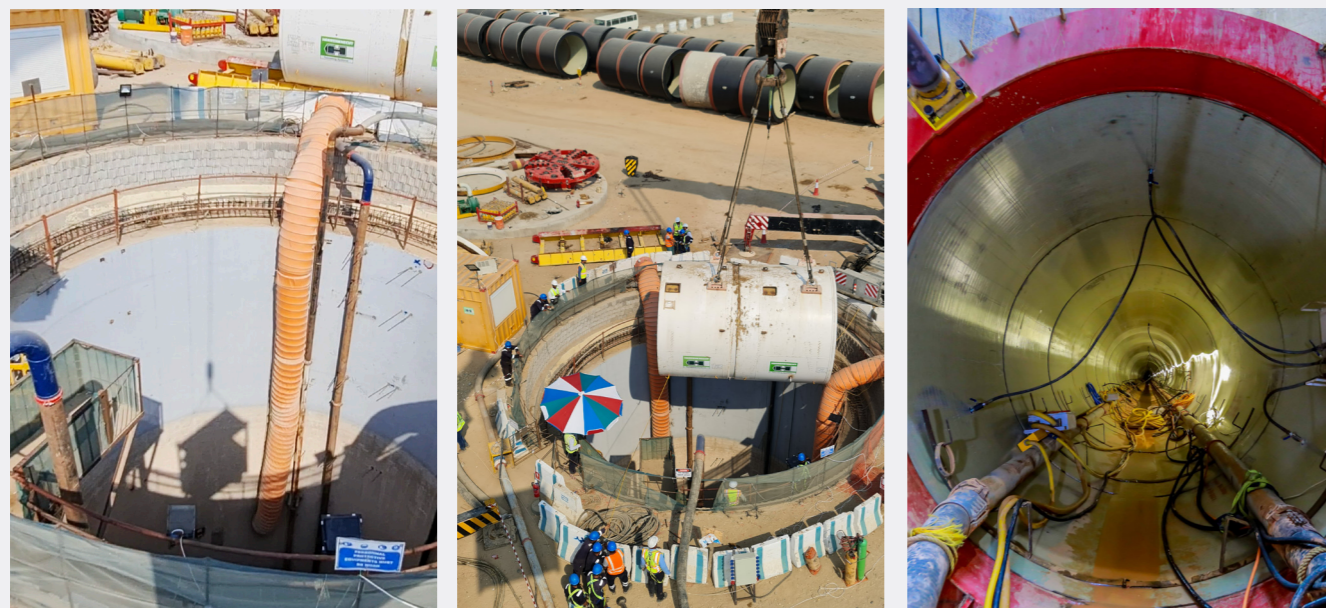
Tunneling Services Include:

1- Pipejacking

Combined with micro-tunneling machines, it is crucial for installing sewerage, water supply, and cable infrastructure beneath roads, railways, and water channels.

2- Segment

Advanced segment lining systems for transportation networks and utilities using precast concrete or steel segments for durable, structurally sound tunnel linings withstand various ground conditions and loads.



KST

Soil Stabilizing Techniques

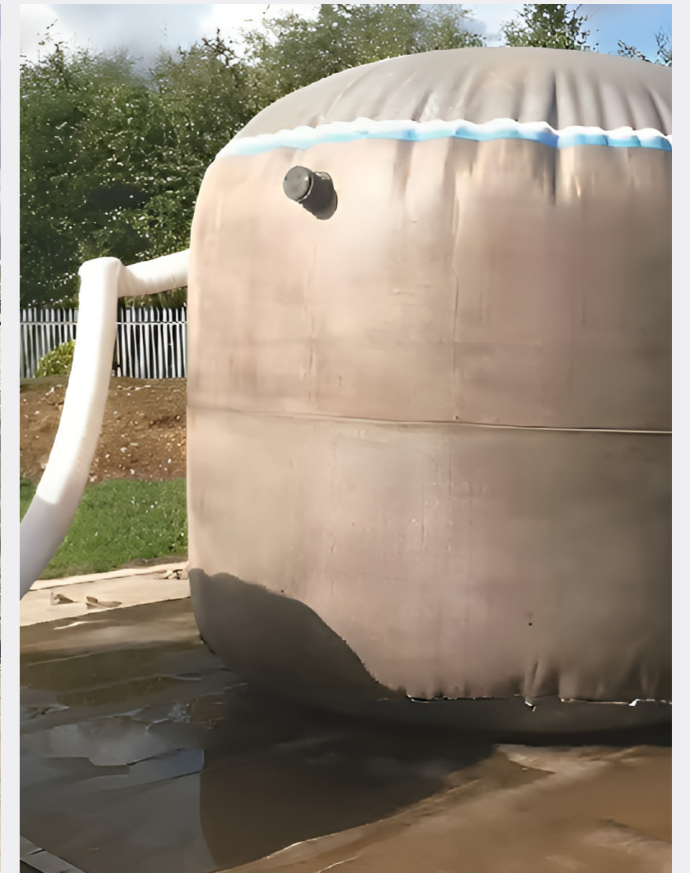


KST is a division within Kabbani Construction Group (KCG), fully dedicated to providing soil stabilization solutions through innovative products and techniques. KST is developed in line with Kabbani Construction Group tradition and vision to create specialized contracting service companies to cater to the market with niche solutions and techniques. Thus contributing to the advancement of the construction sector within Saudi Arabia. KST will also strive to introduce environmentally friendly solutions to the construction sector in line with Saudi Arabia's 2030 Vision.

- 1- Soil Stabilization and Protection
- 2- Soil Reinforcement
- 3- Erosion Control
- 4- Slope Protection
- 5- Channels and Bund Lining

KST utilizes the following innovative solutions:

- 1- Geosynthetic Cementitious Composite Mat (GCCM) is a unique solution manufactured by **Concrete Canvas** that replaces ordinary concrete used in soil protection applications.
- 2- Polymer and Enzymatic Sprayed Soil Stabilizers.
- 3- Geocell Soil Reinforcement Mesh.
- 4- Geogrid Wrapping System for Soil Stabilization.
- 5- DEPLOY Inflatable Concrete Tanks.



SUW

Waterproofing & Damp Proofing & Firestop



SUW (Saudi United Waterproofing Co.) specializes in contracting tasks involving waterproofing, firestopping, flooring, EIFS (Exterior Insulation Finishing System), and concrete rehabilitation. SUW, which was founded in 2002, initially exclusively provided waterproofing, fire-stopping, flooring, EIFS (Exterior Insulation Finishing System), and concrete repair services to SBG projects but has since expanded its client list to include a wide range of businesses within the Saudi market.

SUW's team is filled with high-caliber essential employees and talents, establishing the organization as an extraordinarily dependable and substantial contractor, focused solely on medium-to large-scale contracts and projects.

- 1- Waterproofing
- 2- Damp Proofing
- 3- Roof & Thermal Insulation
- 4- Lining Systems
- 5- EIFS (Exterior Insulation Finishing System)
- 6- All Roof Retrofit Systems
- 7- Industrial & Commercial Flooring
- 8- Firestop
- 9- Concrete Repair



KCG

REGIONAL PRESENCE



Kabbani Construction Group's market is not restricted to the Kingdom of Saudi Arabia alone. In fact, KCG's regional footprint extends to other countries like Egypt, the UAE, Oman, and many others.

Picture: International Airport | Kuwait

KCG Emirates & IMKK

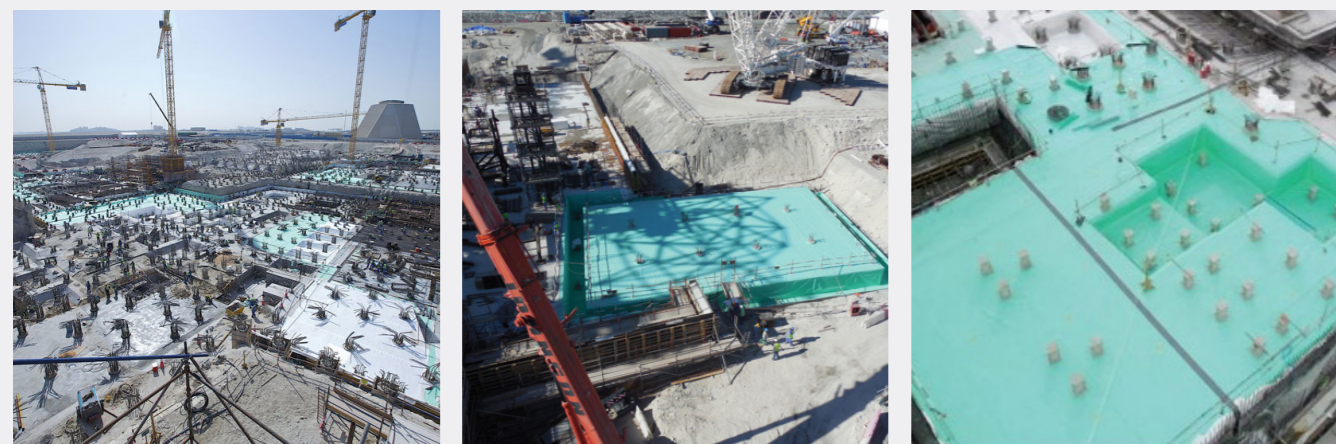


KCG Emirates was founded in September 2006 as a division of KCG Saudi Arabia to address the rising demand for quality specialized contractors in waterproofing. IMKK, a joint venture with Liwa Trading, was formed in order to enter the UAE's industrial sector. ADNOC is one of its many clients.

In ten years, KCG Emirates and IMKK have become market leaders in the UAE for waterproofing, coating, and concrete repair; KCG Emirates has completed the substructure and superstructure waterproofing packages for the Louvre Abu Dhabi, one of Abu Dhabi's most defining landmarks.

These are some of the landmark projects KCG Emirates has contributed to:

- Dubai Airport Concourse 4.
- Abu Dhabi Airport Midfield Terminal.
- Barakah Nuclear Power Plant.
- Dubai Mall Car Park.
- Jebel Ali International Airport.
- Abu Dhabi Financial Center & Cleveland Clinic.



KCG Egypt, A-BUILD Egypt & SCC



A-Build Egypt for Contracting, a proud affiliate of IKK, plays a prominent role in Egypt's construction sector. With the backing of IKK's extensive presence across 16 countries and a strategic alliance with United Holding Company (UHC), we provide high-quality services and exclusive solutions from both international and local manufacturers. Our experienced team of engineers and technicians is committed to delivering efficient and innovative solutions while upholding the highest standards of professionalism.

A-Build Egypt is also a market leader specialized contractor in the following domains:

- Waterproofing.
- Thermal insulation
- Injection
- Protective painting.
- Fire stopping & Fireproofing
- Rubber lining.
- Mechanical & Cladding
- Protective Coating for Concrete.
- Road Marking.
- Epoxy Lining
- Anti- Carbonation Coating
- Screed
- Concrete Repair.
- Strengthening.
- Wind Grouting.
- Expansion Joints.
- Shotcrete Structural

SCC (Specialized Contracting Company) is an Egyptian joint venture between Kabbani and Marasem that intends to deliver our extensive list of specialized services exclusively to Marasem projects. The experience and partnerships of both organizations with many of the key providers in this industry, whether in product, machinery, or know-how, position them to deliver the greatest service to their customers.



Regional Presence

KCG Oman



KABBANI
CONSTRUCTION
GROUP®

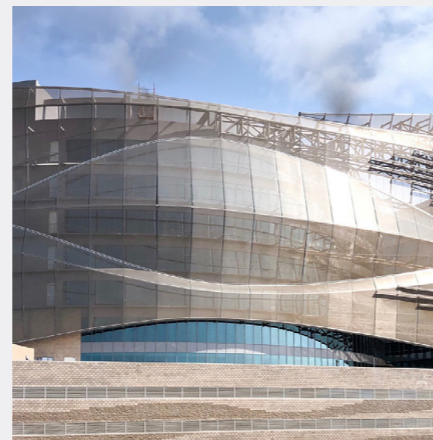


KCG Oman was founded in April 2010 as a branch of KCG Saudi Arabia to address the rising demand in the Oman market for quality specialized contractors in the field of construction protection.

KCG Oman has been growing steadily over the last few years and is well on its way to becoming a market leader in the waterproofing, concrete restoration, and floor coating sectors. This is due to the company's consistency in high-quality services, complete client satisfaction, and the Kabbani name and reputation.

KCG Oman is continually looking for high-quality projects with landmark status, such as the Muscat International Airport, Salalah International Airport, the National Bank of Oman, and the Wave Golf Course.

KCG Oman has completed a 3 million O.R. Terrazzo flooring and bridge deck waterproofing solution for the Muscat International Airport MC3 project.



KCG Bahrain



KABBANI
CONSTRUCTION
GROUP®

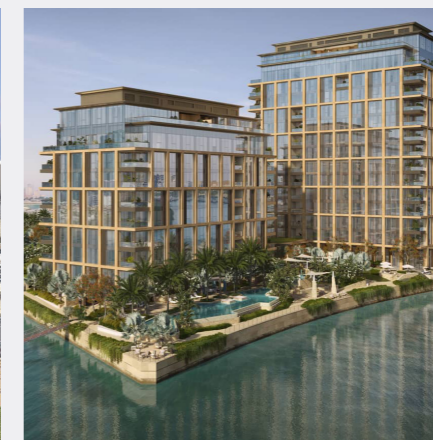


KCG Bahrain offers a wide range of building and construction solutions in the Middle East. Established in 2009, KCG Bahrain has a proven record of accomplishments in diverse construction projects. The team is backed by the collective strength of KCG's specialized divisions, offering a comprehensive range of services such as:

- Roofing and Waterproofing
- Thermal Insulation.
- Geosynthetic Lining Systems
- Structural Repair and Injection Leakage Treatment
- Maintenance Services.
- Floorings and Protective Coatings

KCG Bahrain is committed to exceeding client expectations and prioritizing quality in every aspect of their work. They adhere to the highest international standards and have a dedicated team of skilled professionals who deliver projects on time. They believe in building strong partnerships with clients and contributing to the continued development of Bahrain's construction sector, adhering to sustainable practices and environmental responsibility.

KCG Bahrain's vast portfolio encompassing various project types and sizes makes it an ideal partner for clients seeking construction solutions in the region. KCG has executed several significant projects for ministries of works, housing, interior, and transportation with Bapco, Bahrain International Airport, EWA, etc.



Regional Presence

KCG Kuwait



After first entering the market in 2014, KCG Kuwait was legally established in 2016 as a branch of KCG Saudi Arabia to participate in the growing demand of the Kuwait market as a specialized subcontractor in the construction industry. In a short period, KCG Kuwait, with KCG's impressive reputation, was able to win major high-profile iconic projects such as Kuwait International Terminal T2, Al Salaam Palace, Sabah Al Salem University, Warehouse Mall, International Tennis Complex, Ali Al Salem Air Base, Umm Al Hayman Waste Water Treatment, and the list goes on. KCG Kuwait is approved by KNPC, KOC, MPW, PAI, and the Kuwait Fire Force and registered with the Central Agency of Public Tenders.

Services offered by KCG Kuwait:

- Water Proofing
- Epoxy & Polyurethane Floor Coatings
- Epoxy Terrazzo
- Steel Fireproofing & Firestop
- Thermal Insulation
- Concrete Canvas
- Concrete Repairs
- Blasting & Painting
- Refractory Linings
- Rubber Lining
- Foam Concrete
- Expansion Joints
- Vinyl Flooring & Wall Cladding



A-BUILD Lebanon



A-Build Lebanon Contracting & Trading Co. was established in Lebanon in 1993 in response to a growing concern about construction, safety, and environmental issues. Furthermore, our solutions have been carefully selected to meet today's growing demand for innovative engineering materials.

A-Build can confidently assure its customers of its premium-quality services in the supply and installation of:

- Waterproofing & Damp Proofing
- Concrete Repair & Protection
- Special Floor Coatings
- Lightweight Foam Concrete & Environmental Engineering (Ponds & Landfill Lining)

A-Build Lebanon is the distributor and approved applicator for several famous worldwide manufacturers and products, relying on a highly-skilled, specialized, and motivated staff of engineers, supervisors, and applicators.



KCG

PROJECTS HIGHLIGHTS - **KSA**

We are proud to be a recognized contractor for some of the strategic and prestigious projects taking place in KSA that align with Saudi Vision 2030.

Picture: Amaala | KSA



King Fahd University of Petroleum & Minerals (KFUPM)

Project Owner:	King Fahd University of Petroleum and Minerals.
Location:	Dhahran, KSA.
Year of Completion:	2018.
Scope of Work:	Turnkey Construction for 300 Villas, Building Conversion Research Center, Admission and Student Affairs Building, Building# 75, Central Warehouse Complex Including Fit-out & MEP. Landscape Development, Infrastructure Development, Enabling Works and Road Construction. Waterproofing and Membrane Roofing Systems for Central store warehouse, 312 villas, and 2 multistore Parking.
By Divisions:	KAC, EMCC, SPD & BMC.



ARAMCO General Construction & Maintenance

Project Owner:	ARAMCO.
Location:	Central, Western, Eastern Regions, KSA.
End Date:	Ongoing.
Scope of Work:	General contracting services for residential, medical, hospitality, and educational buildings. Facility Management & General Maintenance, including: Enabling Works & Road Construction, Fit-out, Protective Coating Systems, Structure Insulation Systems for Oil & Gas Facilities, Renovation Services, Concrete Repair & Civil Works, MEP, HVAC and related services, Installation of Security Systems, and Facilities Installation & Restoration.
By Divisions:	COSMA.



Developmental Housing Program - Wave 3

- Project Owner:** National Housing Company.
Location: Jeddah, Najran, Ahsa, Makkah, KSA.
End Date: Ongoing.
Scope of Work: Design & build for all disciplines. Testing, Commissioning, and handover for 1635 units with different models from one bedroom to four bedrooms distributed over eight regions in the KSA. Supply & installation of EIFS façade system.
By Divisions: KAC, EMCC, and BMC.



Amazon Central Warehouse

- Project Owner:** Amazon
Location: Jeddah, KSA.
End Date: 2024.
Scope of Work: System design, Supply of materials, System installation, and Testing & commissioning for batteries, battery chargers, and an 1800 KWp Solar PV System.
By Divisions: IKK Energy.



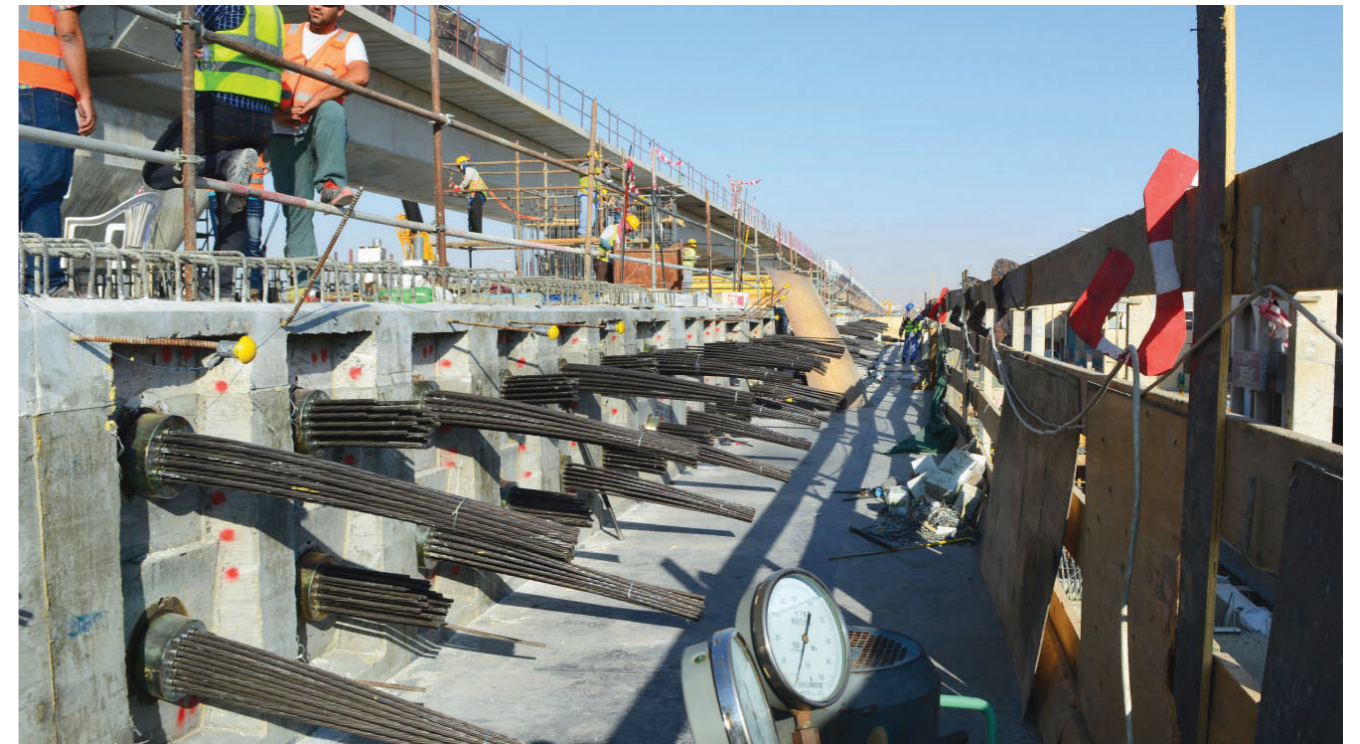
Dammam Airport International Airport

Project Owner: DACO.
Location: Dammam, KSA.
End Date: 2018.
Scope of Work: Concrete Paving Works.
By Divisions: ACMS.



Riyadh Metro Elevated Stations

Project Owner: Arriyadh Development Authority (ADA).
Location: Riyadh, KSA.
End Date: 2019.
Scope of Work: Supply and Supervision of Post-Tensioning Cables and the replacement of the internal lining of the reservoir.
By Divisions: KPT.



Rehabilitation of One Million Tank Reservoir

- Project Owner:** The Saline Water Conversion Corporation (SWCC).
Location: Makkah, KSA.
End Date: Ongoing.
Scope of Work: Structural Rehabilitation, Concrete Repair, 3D Laser Scanning and 3D Modeling for the existing condition of the tank. Replacement of the existing waterproofing system with a new EVA Liner System and Leak Detection System, with a total built-up area of 90,000 sq m and 30 m height, dam 460 m x 20 m.
By Divisions: SPD, Structural Systems, BMC & DCU.



Heritage Restoration for 70 historical buildings

- Project Owner:** Confidential.
Location: KSA.
End Date: 2025.
Scope of Work: Restoration, conservation, and rehabilitation of 70 buildings with a total BUA of 15,120m². Scope of work including but not limited to Excavation & backfilling works, Civil & strengthening for reinforced concrete (Slabs, Column, Foundation, Stairs, Beams), Fabrication, re-fabrication, procurement, supply, and installation for all architecture works, elements, & art.
By Divisions: Structural Systems & HRC.



Riyadh Metro - Line 3

Project Owner: Arriyadh Development Authority.
Location: Riyadh, KSA.
End Date: 2021.
Scope of Work: MEP works for seven deep stations, including Low & Medium Voltage Networks, Substations, HVAC (Heating, Ventilation & Air Conditioning) Systems, and Tunnel Ventilation System.
By Divisions: EMCC.



King Abdulaziz International Airport

Project Owner: General Authority of Civil Aviation (GACA).
Location: Jeddah, KSA.
End Date: 2019.
Scope of Work: Waterproofing & Thermal Insulation, Firestopping & Traffic Coating Works. Repair Work for Concrete Substrate, Car Park Coating System, Cement Fireproofing, Intumescent Fireproofing, Internal & External Protective Coating. Supply & Installation of Expansion Joint, Crack Injection Works. Internal Surface Preparation for Slabs & Floors, Concrete Leveling Works. Engineering, Supplying, Fabrication, and Erection of Steel Structures.
By Divisions: SUW, CRES, Structural Systems, ACMS and FULAZ.



New Headquarters for the Ministry of Energy

- Project Owner:** Ministry of Energy, Industry and Mineral Resources.
Location: Riyadh, KSA.
End Date: Ongoing.
Scope of Work: Complete Fit-out Works for architectural, electrical, mechanical, audio, and video. Supply & Install the complete furniture for a 20-story tower with a built-up area of 55,000 sq m.
By Divisions: KAC and EMCC.



New Headquarters for the Ministry of Transport

- Project Owner:** Ministry of Transport.
Location: Riyadh, KSA.
End Date: Ongoing.
Scope of Work: Testing, Commissioning, and Handover for all Fit-out Works and Interior Finishes. Supply & Installation of furniture for the whole tower (offices, meeting room, workstation area, social area, lounge, waiting area, and reception). 3D Laser Scanning and Modeling of the existing condition for all 28 floors with a total built-up area of 25,000 sq m.
By Divisions: KAC, BMC, EMCC, and DCU.



Construction of the NWC Water Tunnel

- Project Owner:** National Water Company (NWC).
Location: Jeddah, KSA.
End Date: 2023.
Scope of Work: Microtunneling of the main tunnel passing under Al Haramain train with a diameter of 3500 mm, a length of 960 lm, and a depth of 55 m underground.
By Divisions: SPD and Concord jointly.



SABIC General Construction & Maintenance Contract

- Project Owner:** ARAMCO.
Location: Central, Western, & Eastern Regions, KSA.
End Date: Ongoing.
Scope of Work: General contracting works for Concrete Repair, Civil Works, Coating Works & Structural Strengthening. Replacement of surge-on Headliners for a cooling Tower. Repair Work, and Construction of the Storm Water Ditches. Rehabilitation Services, Construct the Storm Water Drain, Repair Damaged Networks, Road Construction, Aluminum Cladding, Tank Sealant Repair and Waterproofing.
By Divisions: Cosma, ISD.



King Salman Air Base (KSAB)

Project Owner:	MODA.
Location:	Riyadh, KSA.
End Date:	Ongoing.
Scope of Work:	Civil works, including 2,200,000 m ³ of Earthworks, 15,000 m ³ of Flexible & Rigid Pavement Works for Runways and Taxiways, 2000 L.M Rains Drainage network, 50,000 m ² of Road, Runways and Taxiways signs planning
By Divisions:	SPD.



Qassim Storm & Sewerage Network

Project Owner:	Qassim Municipality.
Location:	Qassim, KSA.
End Date:	2021.
Scope of Work:	Construction of a 15 km storm water Network pipeline in addition to a 16 km culvert box & Construction of 150 km of Pipeline, Sewage Networks, Connections, and its Lift Station.
By Divisions:	SPD, EMCC.



Construction of AMAALA Airport Runway

Project Owner: AMAALA.
Location: Al Wajh, KSA.
End Date: 2022.
Scope of Work: Construction & Enabling Work for Runways and Taxiways and Aprons.
By Divisions: SPD.



World Defense Show

Project Owner: Saudi Arabian Military Industries.
Location: Riyadh, KSA.
End Date: 2022.
Scope of Work: Execution of Crushed Aggregate (Subbase + Base) Course & Asphalt Concrete (Base + Surface) Course for Runway Shoulder, Taxiway Shoulder, Blast Pad & ARFF, Taxiways & Apron.
By Divisions: SPD.



Precast Villas for The Ministry of Health (MOH)

Project Owner: Ministry of Health.
Location: Al Ahsa, KSA
End Date: 2022.
Scope of Work: The Supply, Delivery, and Erection (with Cranes) of the Precast Element and Prestressed Hollow-Core Slab.
By Divisions: INSHAA.



Al-Khafji Joint Operations (KJO)

Project Owner: Aramco Gulf Operations Company Limited ("AGOC") and Kuwait Gulf Oil Company Ltd.
Location: Al-Khafji, KSA.
End Date: 15-year agreement ends in 2036.
Scope of Work: Oil and Gas exploration, Development, and Production in the offshore area. Supervision, Manpower, Materials, and Equipment for Blasting & Painting Activity, including Scaffolding to repair the platforms in the offshore area.
By Divisions: CRES.



KARWEST

Project Owner: ADA.
Location: Jeddah, KSA.
End Date: 2016.
Scope of Work: Supply and Installation of Post-Tensioning Works of 2 Flyovers (850 Tons PT Strands), 2 Main Bridges, and 1 Girders Bridge.
By Divisions: KPT.



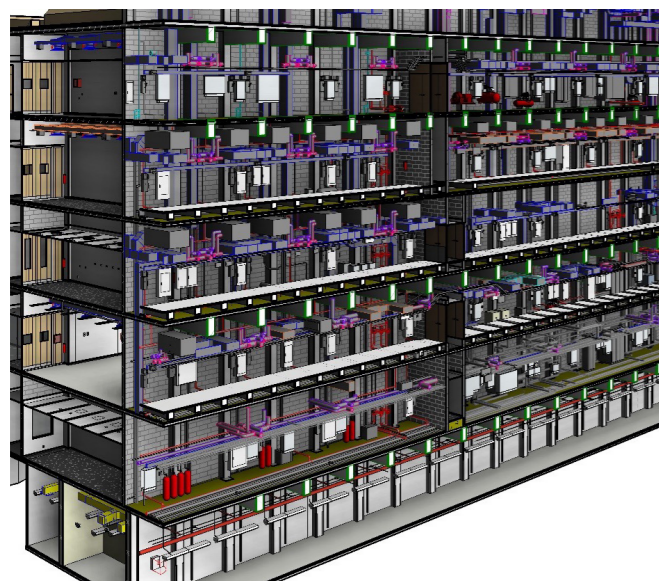
Avenues Riyadh

Project Owner: Shomoul.
Location: Riyadh, KSA.
End Date: Ongoing.
Scope of Work: Supply and Supervision for 218,000 sq m of Post-Tensioning Slabs.
By Divisions: KPT.



Research and Development Building of KFUPM

- Project Owner:** King Fahad University of Petroleum and Minerals (KFUPM).
Location: Dhahran, KSA.
End Date: 2022.
Scope of Work: As-built package through 3D Laser Scanning, 3D Revit modeling, and 2D Documentation for the as-existing condition of the building for all disciplines.
By Divisions: DCU.



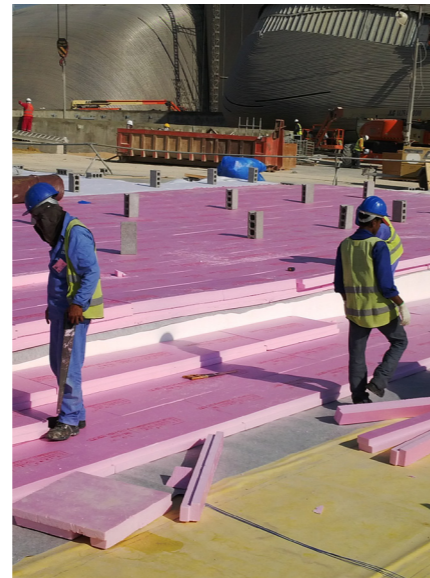
Holy Haram's 10-KtM Underground Utility Culvert

- Project Owner:** The General Presidency for the Affairs of the Two Holy Mosques (GPH).
Location: Makkah, KSA.
End Date: 2013.
Scope of Work: Structural Condition Assessment, Development of As-Built Drawings, Asset Management, Visual Inspection, Non-Destructive Testing, Material Sampling & Testing, Rectification Works Recommendation, Supply & Apply the Asset Management System of the Underground Utility Culvert, in addition to Rehabilitation and Maintenance for the 10-KM utility tunnels, Structural Assessment, Concrete Repair, and Electromechanical Work.
By Divisions: Inspectech – Structural Systems – EMCC.



King Abdulaziz Center for World Culture

Project Owner: ARAMCO.
Location: Dhahran, KSA.
End Date: 2018.
Scope of Work: Supply, Installation, and Testing of a High-Efficiency and Water-Tight Roofgarden System Utilizing Thermoplastic Membranes for a 35,000 sq m Area. The roofing system was equipped with a state-of-the-art leak detection system to ensure ultimate watertightness.
By Divisions: BMC.



Concrete Structure Rehabilitation of KFUPM Services Tunnel

Project Owner: King Fahad University of Petroleum and Minerals
Location: Dhahran, KSA.
End Date: 2023.
Scope of Work: Structural rehabilitation for a 1.3 KM service/utility tunnel: slab jacketing, wall reskinning, crack injection, and installation of corrosion inhibitors inside the concrete structure of the service tunnel. Using BIM standards, including 2D and 3D documentation for the as-existing and as-built conditions, provided by advanced 3D laser scanning solutions for reality capture.
By Divisions: Structural Systems and DCU.



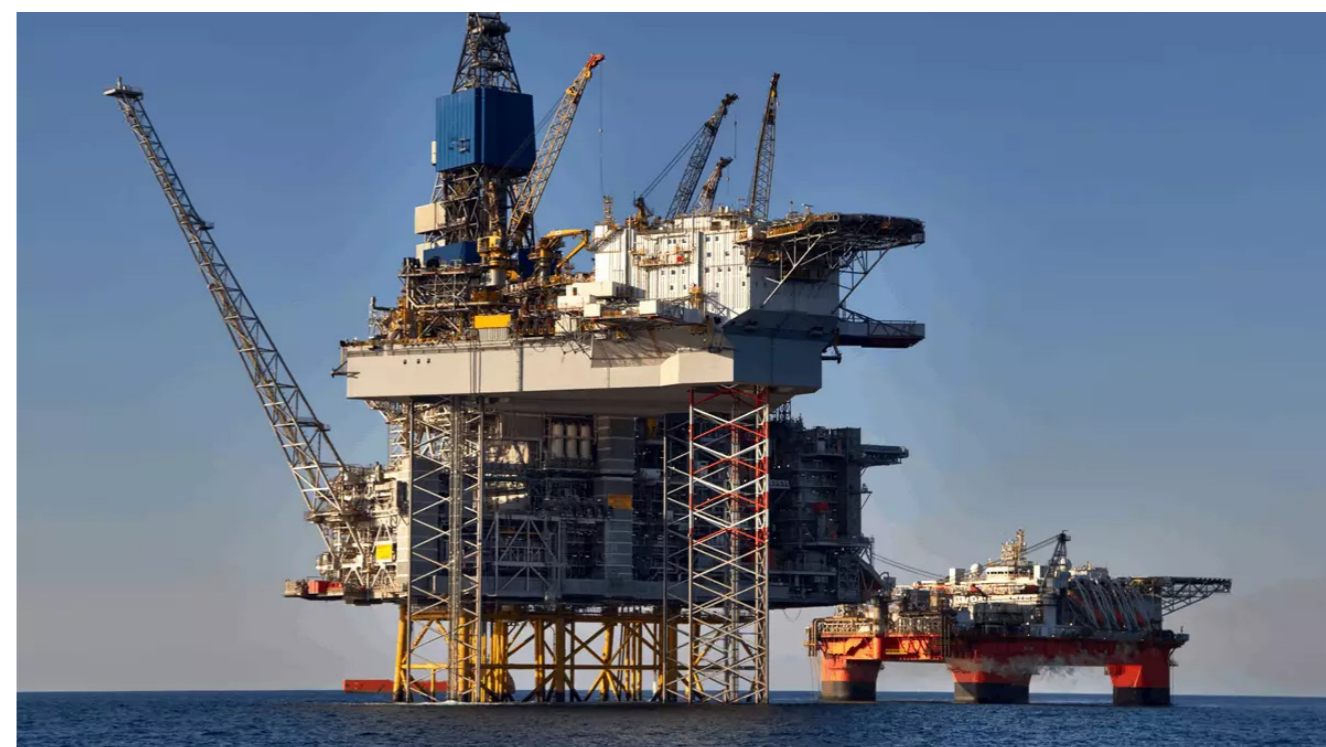
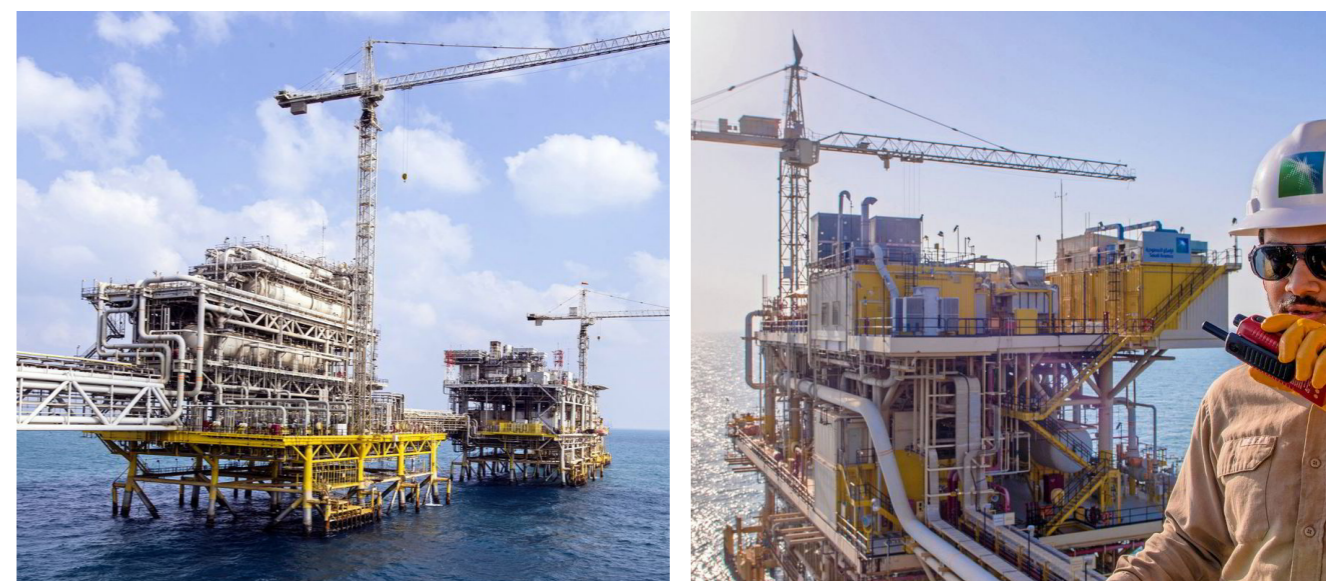
King Khaled Bridge

Project Owner: Ministry of Transport.
Location: Riyadh, KSA.
End Date: 2015.
Scope of Work: Visual Inspection, Non-Destructive Testing, Material Sampling & Testing, Structural Analysis, Rectification Works Recommendation, Structural Strengthening Design, and Quality Assurance Bridge Load Testing.
By Divisions: Inspectech.



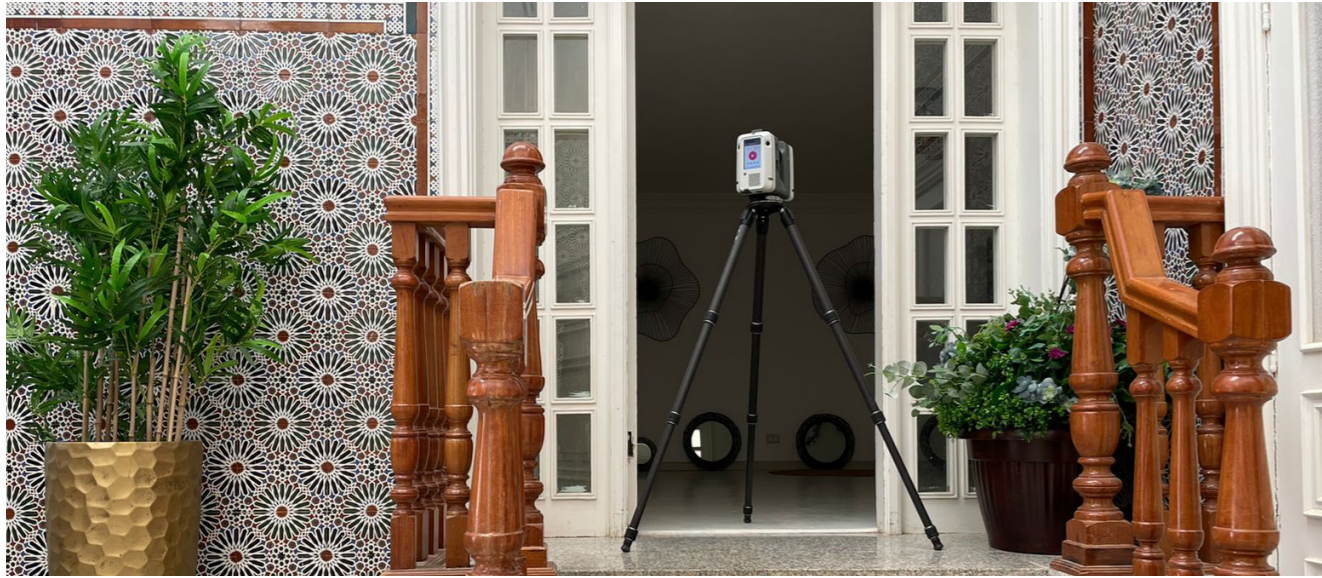
Saudi Aramco's Offshore Maintain Potential Program

Project Owner: Saudi Aramco.
Location: Eastern Region, KSA.
End Date: On going.
Scope of Work: Non-Destructive Testing, Heat Treatment and Inspection Services.
By Divisions: SOGEC.



Matal Al Hada Palace

Project Owner: AMSAD Architectural Associates.
Location: Al Taif, KSA.
End Date: 2022.
Scope of Work: As-built package through 3D Laser Scanning, 3D Revit Modeling, and 2D Documentation for the as-existing condition of the building for all disciplines.
By Divisions: DCU.



SICM Dammam Crude & Gas Development Project

Project Owner: Saudi Aramco.
Location: Dammam, KSA.
End Date: Ongoing.
Scope of Work: Non-Destructive Testing and Inspection Services for the onshore pipeline.
By Divisions: SOGEC.



Structural Rehabilitation & Maintenance of Bridges and Tunnel

Project Owner: Jeddah Municipality
Location: Jeddah, KSA.
End Date: Ongoing.
Scope of Work: Structural Rehabilitation & Maintenance for 47 bridges and 18 tunnels.
By Divisions: Structural Systems.



King Faisal University General construction Works

Project Owner: King Faisal University.
Location: Al Ahsa, KSA.
End Date: 2018.
Scope of Work: Construction of Girls Academic Building that includes Interior Design, Supply and Apply of office furniture, Electrical Works and Construction of Girls Academic Building.
By Divisions: KAC.



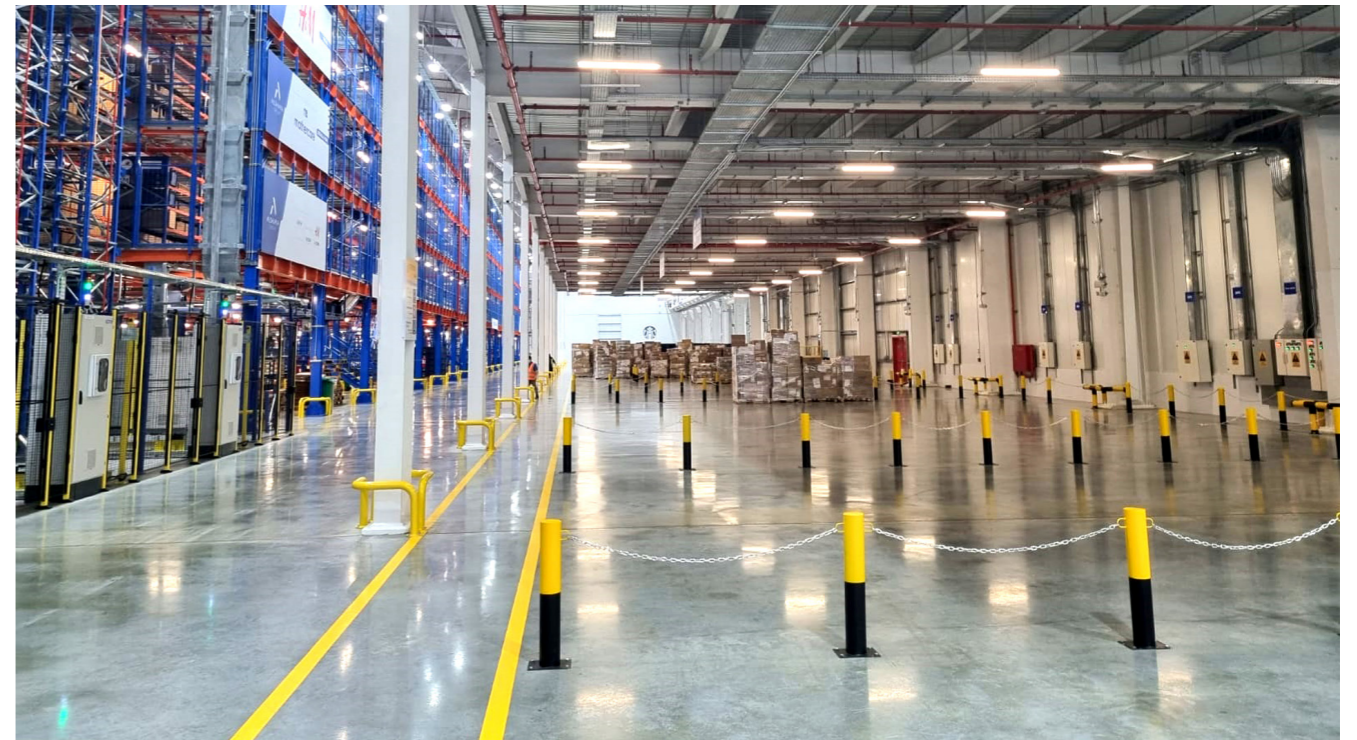
Renovation of VIP & Royal Terminals in 14 Domestic Airports

Project Owner: General Authority of Civil Aviation
Location: KSA.
End Date: 2017.
Scope of Work: Renovation and Development of 14 KSA Airports, including Royal and VIP Lounges, Departure and Check-in and Arrivals Halls, Construction of Explosives Detection, Removal, and Neutralization Buildings, and Renovation and Development of Fire and Rescue Buildings.
By Divisions: KAC, EMCC, BMC, CRES.



AL Shaya Warehouse

Project Owner: Al Shaya Holding.
Location: Riyadh, Saudi Arabia.
End Date: 2023.
Scope of Work: Design, Supply, and Installation of Twintec Freeplan® Internal Ground Bearing Floor Slab with a total area of 53,013m². The floor thickness is 320 mm & 280 mm & 170 mm.
By Divisions: Twintec.



KCG

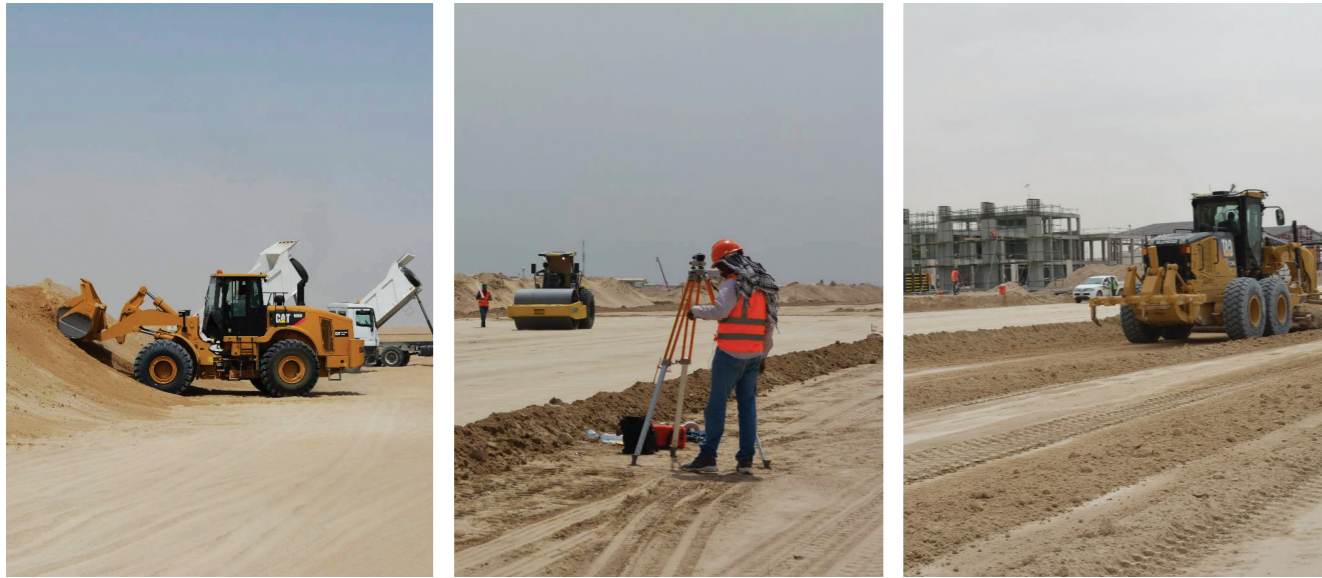
PROJECTS HIGHLIGHTS - GLOBAL

KCG's specialized construction legacy shapes the KSA and MENA landscapes. We tackle the most complex projects, earning our leading position as the Middle East's trusted partner for innovation.

Picture: Louvre Museum Abu Dhabi | UAE

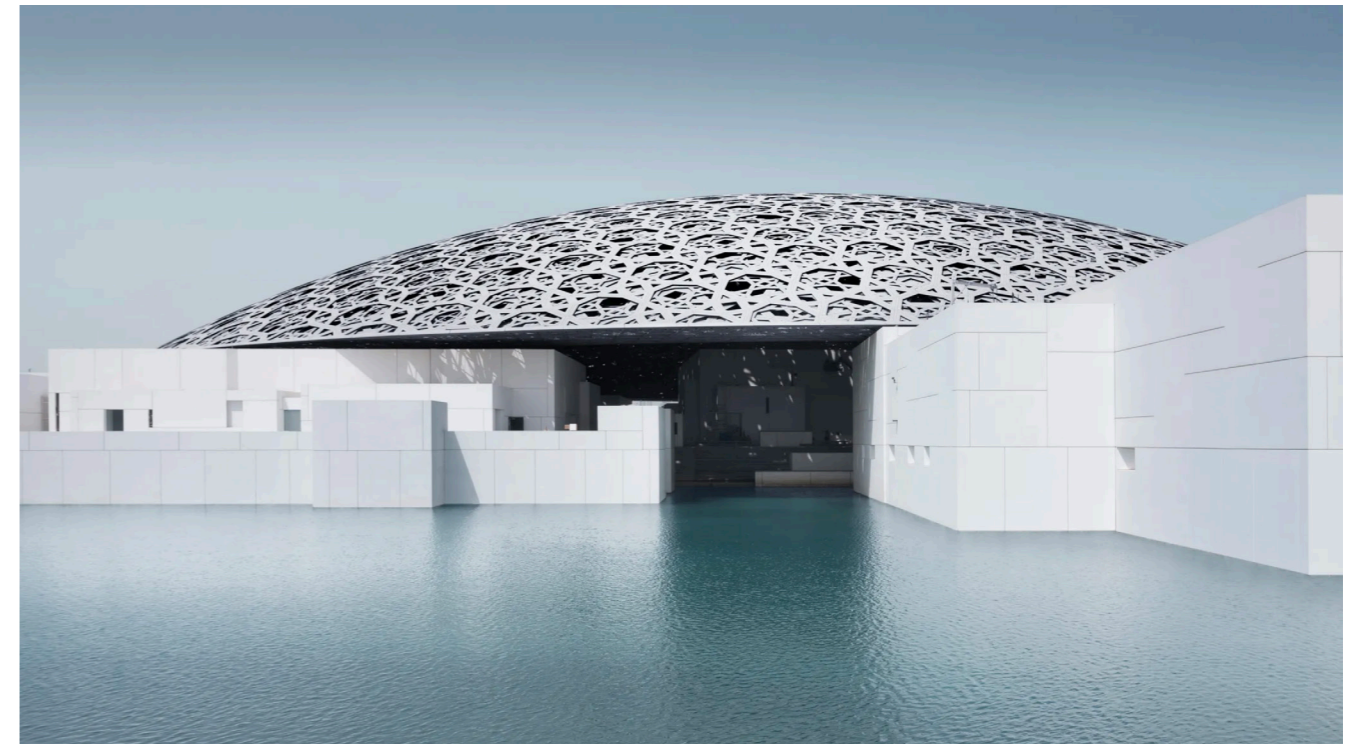
Ali Al Salem Air Force Base

- Project Owner:** Leonardo Aircraft.
Location: Kuwait.
End Date: 2020.
Scope of Work: Excavation Works, Backfilling Works, Concrete Paving for Aprons and Asphalt for Taxiways.
By Divisions: SPD.



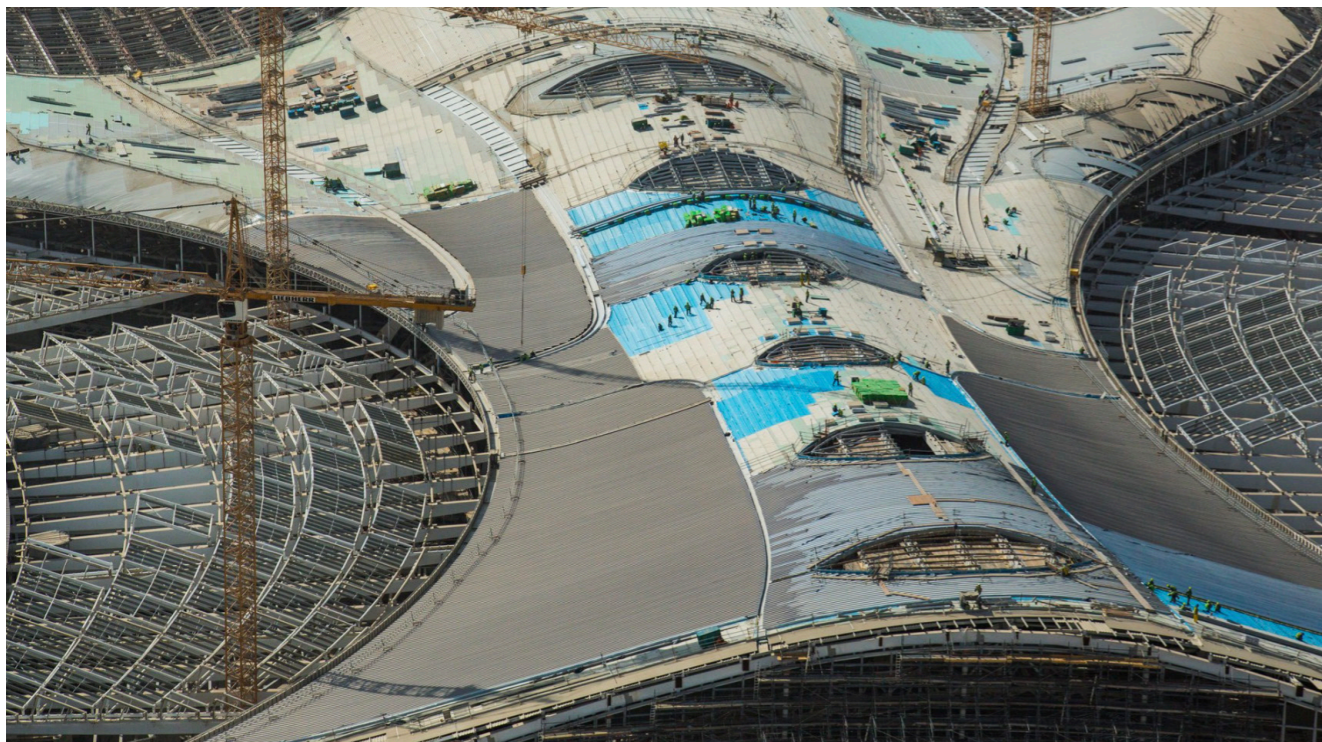
Louvre Abu Dhabi Museum

- Project Owner:** Abu Dhabi Department of Culture & Tourism.
Location: Abu Dhabi, UAE.
End Date: 2016.
Scope of Work: Waterproofing for deep foundations submerged in the sea with full-project Waterproofing Solutions from the basement to the roof.
By Divisions: KCG Emirates.



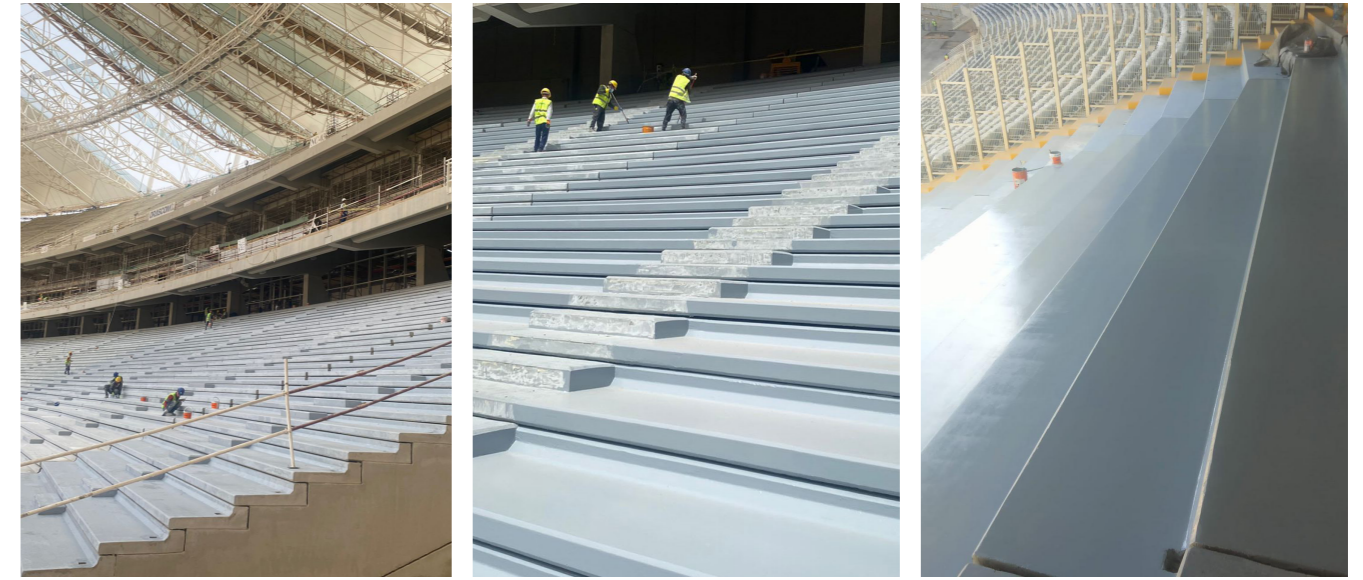
Abu Dhabi International Airport

Project Owner: Abu Dhabi Airports Company.
Location: Abu Dhabi, UAE.
End Date: 2018.
Scope of Work: Waterproofing Works & Polyurethane Car Park Floor Coating Works.
By Divisions: KCG Emirates.



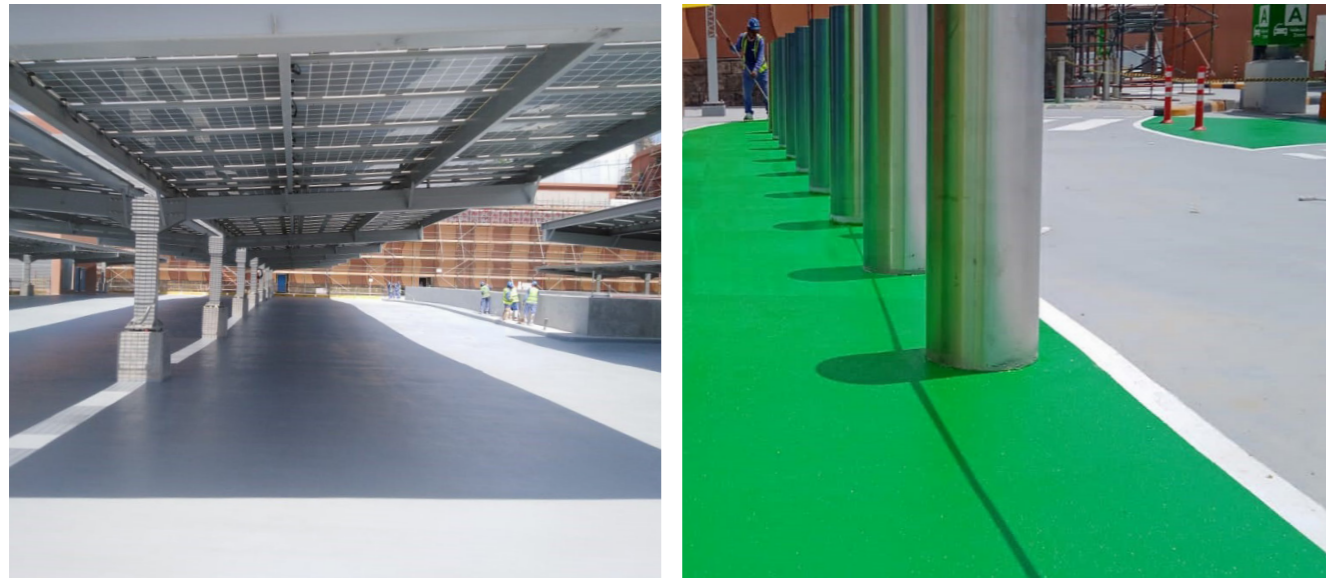
The Egyptian Army Stadium at the New Administrative Capital

Project Owner: Government.
Location: New Capital, Egypt.
End Date: 2024.
Scope of Work: Supply & Application of Epoxy & Polyurethane Coatings for Car Park, Ramps and Bleachers. Supply and Application of Waterproofing Work for Underground, Tank, and Wet Areas.
By Divisions: A-Build Egypt.



Mall of Oman

- Project Owner:** Majid Al Futtaim.
Location: Muscat, Oman.
End Date: 2021.
Scope of Work: Internal Car Parking Works for an Area of 185,000 sq m, External Car Parking Works for an Area of 60,000 sq m, and Anti-Carbonation Painting Works for an Area of 230,000 sq m.
By Divisions: KCG Oman.



Zayed National Museum

- Project Owner:** The Tourist Development and Investment Company of Abu Dhabi (TDIC).
Location: Abu Dhabi, UAE.
End Date: Ongoing.
Scope of Work: Installation of Substructure Waterproofing Consisting of a PVC System with a total area of 5800 sq m and a Spray-Applied Polyurea Membrane System with a total area of 24,431 sq m.
By Divisions: KCG Emirates.



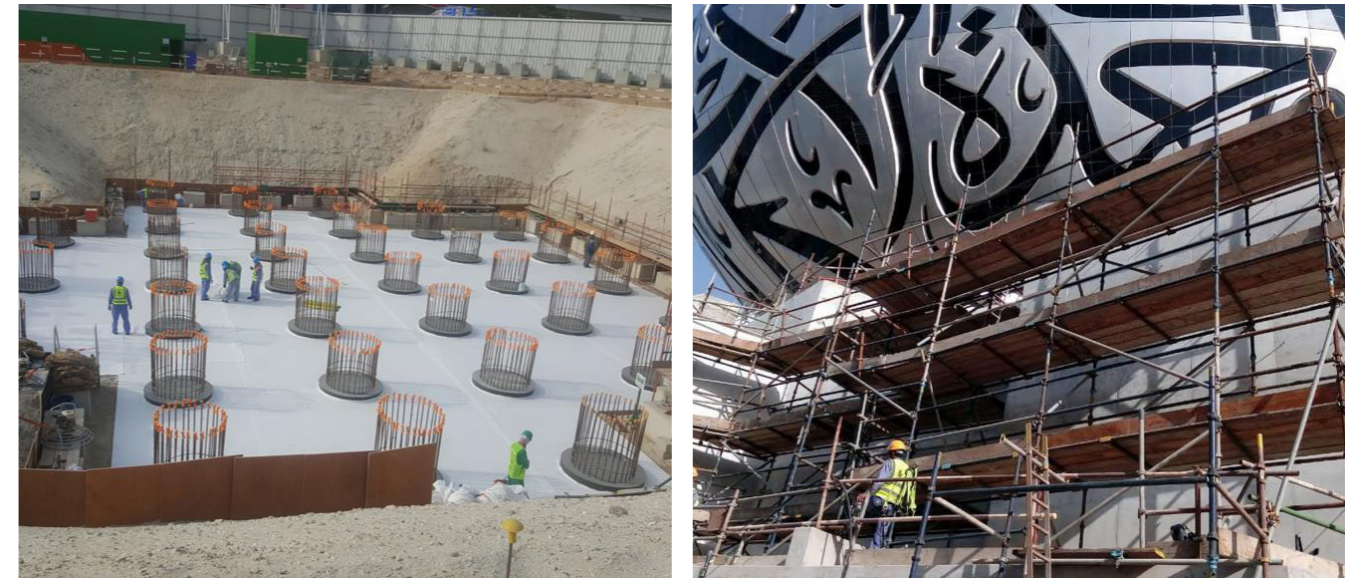
SeaWorld Abu Dhabi

- Project Owner:** Miral Asset Management .
- Location:** Abu Dhabi, UAE.
- End Date:** 2021.
- Scope of Work:** Installation of Substructure Waterproofing Comprising an SBS system with a total area of 158,196 sq m and the Application of Rubberized Bituminous Waterproofing Emulsion On Grade Slab with a total area of 21,000 sq m. In addition to Pile Head Treatment, Treatment of Construction Joints in Aquatic Tanks with Injection Hose, Swell Able Bars, and Re-injectable Grout with a total of 34,126 lm.
- By Divisions:** KCG Emirates.



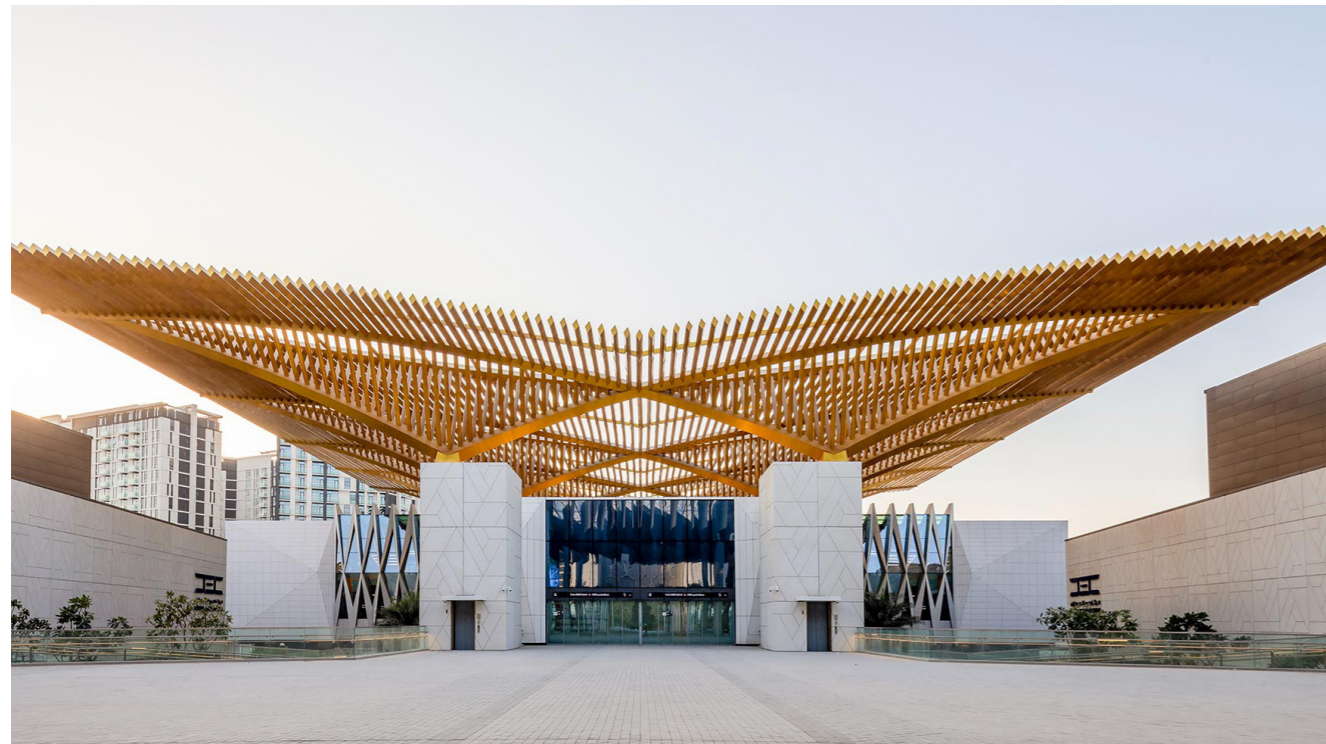
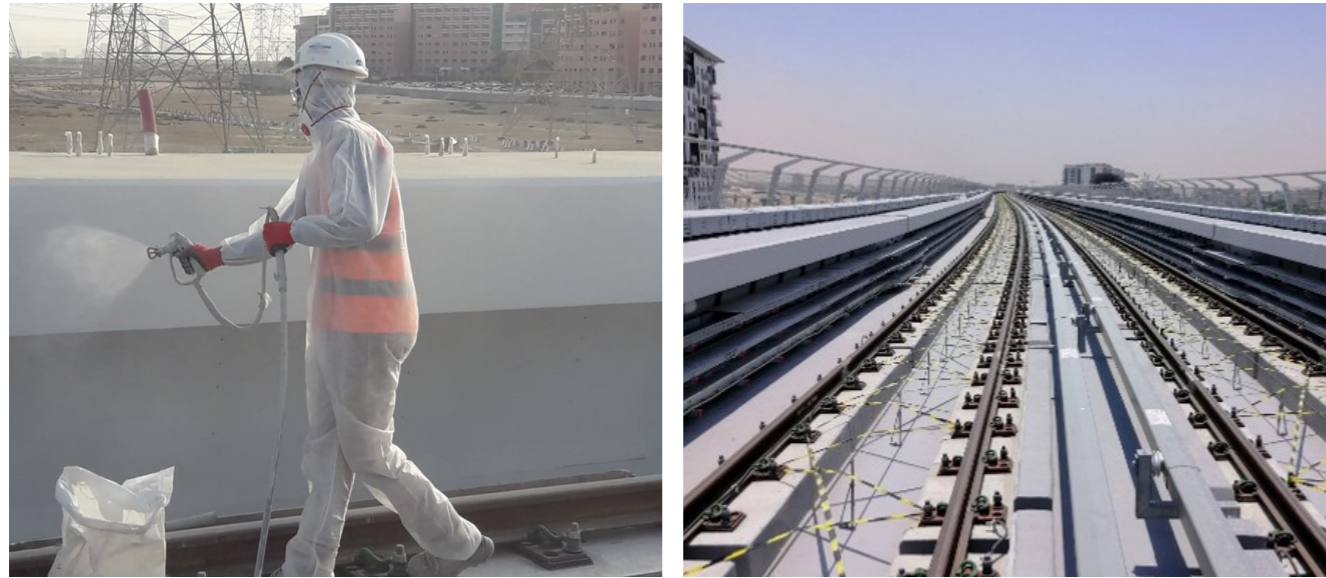
Museum of The Future

- Project Owner:** The Tourist Development and Investment Company of Abu Dhabi (TDIC).
- Location:** Abu Dhabi, UAE.
- End Date:** 2021.
- Scope of Work:** Installation of substructure waterproofing comprising of PVC system with a total area of 14,500 sq m. nstallation of a Polyurea Membrane System with a total area of 18,025sq m on the podium and a polyurethane system for wet areas with a total area of 1,370 sq m.
- By Divisions:** KCG Emirates.



Dubai Expo 2020 Metro Route

- Project Owner:** Roads and Transport Authority (RTA).
Location: Dubai, UAE.
End Date: 2020.
Scope of Work: Anti-Carbonation Protective Coating in Piers, Spans, Beams, and the Inner Sell Box & Parapet, with a total area of 162,880 sq m. Epoxy-Liquid-Applied Waterproofing Membrane at the top of the span of a metro track, covering a total area of 50,220 sq m.
By Divisions: KCG Emirates.



Infinity Bridge Dubai

- Project Owner:** Roads and Transport Authority (RTA).
Location: Dubai, UAE.
End Date: Ongoing.
Scope of Work: Application of Anti-Carbonation Protective Coating in Piers, Spans, Beams, Inner Sell Box, and Parapet with a total area of 228,455 sq m.
By Divisions: KCG Emirates.



R5 Settlement - New Administrative Capital in Egypt

- Project Owner:** Egypt's Ministry of Housing (Utilities & Urban Development).
Location: New Administration Capital, Egypt.
End Date: Ongoing.
Scope of Work: Supply and supervision of 2 million square meters of post-tensioning slabs. Post-Tensioning works for Concrete Slabs of {28} Clusters & Towers in the R5 Project, with BUA of 1,700,000 m2 of PT Slabs, one of the biggest zones in R5 Project.
By Divisions: SCC.



Six Senses – The Palm, Dubai, UAE

- Project Owner:** Innovo.
Location: Dubai, UAE.
End Date: 2024.
Scope of Work: The scope of work includes but not limited to design to the extent required in the specification, engineering, supply, delivery to site, installation, testing, commissioning, handover, warranty, and remedying of defects therein of Insulation & Finishes System (EIFS) and Multicoat Render System.
By Divisions: KCG Emirates.



Four Seasons Hotel Bahrain Bay

Project Owner: Bareeq Al Retaj.
Location: Bahrain Bay.
Scope of Work: Supply And Installation Of Substructure PVC Compartment System.
By Divisions: KCG Bahrain.



King Abdullah Bin Abdulaziz Medical City (KAMC)

Project Owner: Arabian Gulf University.
Location: Manama, Bahrain.
Scope of Work: Supply and Installation of PVC Waterproofing System (Substructure, Roof, Wet Areas and Planter Boxes).
By Divisions: KCG Bahrain.



Our Contacts

Regional Offices

KCG Emirates

- 📍 Saih Shuaib 3 ,4 R/A Dubai Industrial City, opposite DEWA substation.
- ✉ P.O.Box 282751 Dubai – UAE.
- ☎ + 971 4 818 1987
- 📠 +971 4 429 7031

KCG Egypt & A-Build Egypt

- 📍 20 Moustafa Refaat Street, Sheraton, Cairo, Egypt.
- ✉ P.O.Box 11799 Cairo-Egypt.
- ☎ +2 (02) 21262798
- 📠 +2 (02) 21262798

A-Build Lebanon

- 📍 Tallet Al Khayat, Najjar Street, Panorama Building, Ground Floor.
- ✉ P.O.Box 13-6031 Beirut-Lebanon.
- ☎ +961 1 704 907 / +961 1 704908 / +961 3 377344
- 📠 +961 1 704 909

KCG Oman

- 📍 Ali Al Mahrouqi Building Flat No 403, Building No.176, Plot No. 511, Block No. 250, Ghala Bowsher.
- ✉ P.O. Box 1759, PC # 133 Muscat, Oman.
- ☎ +968 2 411 7545 / 46
- 📠 +968 2 411 7547

KCG Bahrain

- 📍 Road 3649, Block 436, Flat No. 11, Building 2748, Alseef Dist, Bahrain Kingdom
- ✉ P.O Box 5106 – Alseef Dist, Bahrain Kingdom.
- ☎ +973 1 725 2163
- 📠 +973 1 725 2148

KCG Kuwait

- 📍 Kuwait, Sharq, Block No. 3, Ibn Mesbah Street, Ahmed Tower, Floor No, 4.
- ✉ P.O BOX : 13009.
- ☎ +965 22 020 218
- 📠 +965 22 020 219

KSA Offices

KCG Western Region

- ✉ P.O. Box 5338, Jeddah 21422 KSA.
- ☎ +966 12 627 8444
- 📠 +966 12 62 78333

KCG Central Region

- ✉ P.O. Box 58951, Riyadh 11515 KSA.
- ☎ +966 11 292 8444
- 📠 +966 11 292 8111

KCG Eastern Region

- ✉ P.O. Box 6897, Dammam 31452 KSA.
- ☎ +966 13 892 3444
- 📠 +966 13 859 0289

KCG Northern Region

- ✉ P.O. Box 15313, Tabuk 47911 KSA.
- ☎ +966 14 512 0222
- 📠 +966 14 512 0221

Kabbani Construction Group
www.kcg-ikk.com

